



# Ultimate Wood Inswing French Door 2 1/4inch Arch Top

## Replacement Parts

Specifications and technical data are subject to change without notice.

Numbers listed in ( ) parentheses are metric equivalents in millimeters rounded to the nearest whole number.

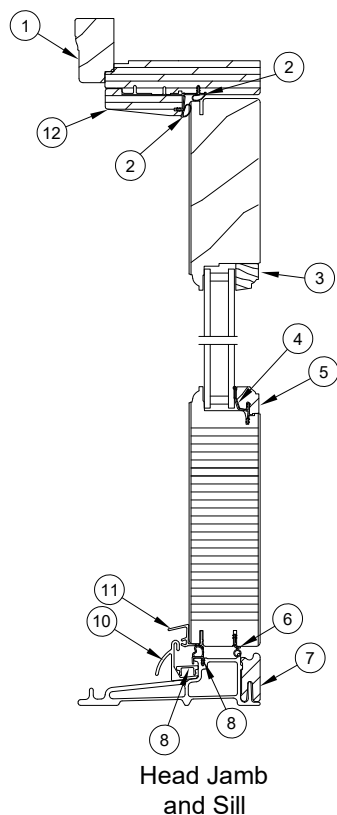
Suggested fasteners are not included and must be ordered separately.

Illustrations are not to scale.

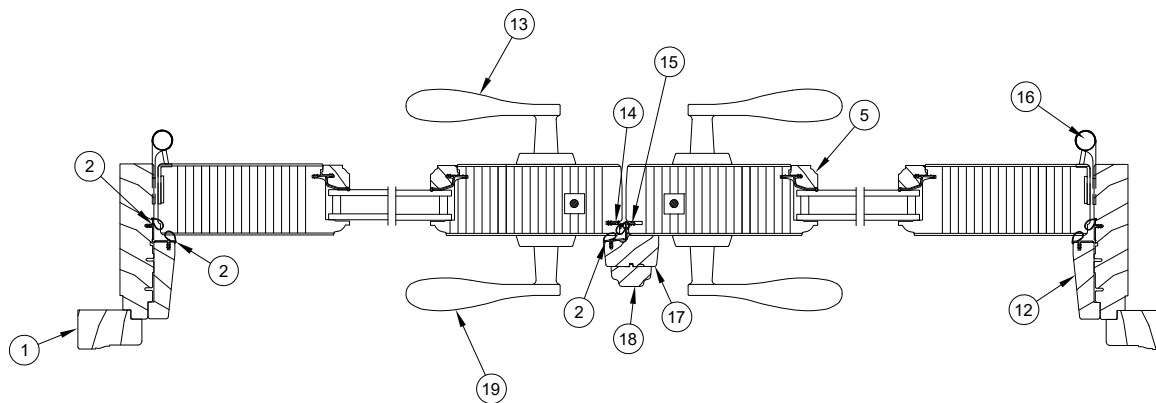
## Contents

|  |    |
|--|----|
| Product History.....   | 2  |
| Part Identification - XX L .....                             | 3  |
| Installation Accessories .....                               | 4  |
| Traditional Handle.....                                      | 5  |
| Contemporary Handle .....                                    | 10 |
| Handle - Keyed Cylinder.....                                 | 15 |
| Handle Set - Discontinued Limited Availability (LA).....     | 16 |
| Hinge Hanging Location .....                                 | 18 |
| Hinges.....  | 19 |
| Locking Hardware .....                                       | 21 |
| Miscellaneous Parts .....                                    | 25 |
| Miscellaneous Parts - Discontinued No Availability (NA)..... | 26 |
| Aluminum Parts .....   | 27 |
| Fiberglass Parts.....  | 29 |
| Vinyl Parts.....   | 30 |
| Vinyl Parts - Discontinued No Availability (NA).....         | 31 |
| Wood Parts.....  | 32 |
| Wood Parts - Discontinued Limited Availability (LA) .....    | 33 |
| Weather Strip .....  | 34 |
| Panel Replacement .....                                      | 36 |

| Produced | Unit Type   | Features and Changes  |
|----------|---|---|
| 2005     | Ultimate Wood Inswing French Door<br>2 1/4Inch Arch Top | 5/31/2005: 2 1/4inch Panel IZ3 doors introduced. Units feature multi-point lock, LVL stiles and rails, and 4 1/8" x 4 1/2" ball bearing hinges.   |
| 2006     | Ultimate Wood Inswing French Door<br>2 1/4Inch Arch Top | 11/20/2006: Introduced the 2 1/4inch door as a standard residential product.  |
| 2007     | Ultimate Wood Inswing French Door<br>2 1/4Inch Arch Top | 2/20/07: Introduced raised and flat panels as a standard option.  |
| 2008     | Ultimate Wood Inswing French Door<br>2 1/4Inch Arch Top | 7/28/2008: Mixed Grain Douglas Fir is now a standard option.  |
| 2009     | Ultimate Wood Inswing French Door<br>2 1/4Inch Arch Top | 3/23/2009: Added LoE3-366 as a standard option for all products. Added Cedro Macho as a standard option for all Ultimate products.  |
| 2010     | Ultimate Wood Inswing French Door<br>2 1/4Inch Arch Top | 2/22/2010: Added Dark Bronze hardware finish to doors.  |
| 2011     | Ultimate Wood Inswing French Door<br>2 1/4Inch Arch Top | 4/25/2011: Added LoE-180 as a standard option for all products. White painted interior finish option introduced for all products.   |
| 2012     | Ultimate Wood Inswing French Door<br>2 1/4Inch Arch Top | 7/30/2012: Adjustable Hinge became standard.<br>10/29/2012: Interior Square Sticking/Glazing Bead option introduced.<br>12/17/2012: Introduced Clear Interior Finish option on all products.  |
| 2013     | Ultimate Wood Inswing French Door<br>2 1/4Inch Arch Top | 4/29/2013: Introduced interior stain options. Stain colors are Wheat, Honey, Leather, Hazelnut, Cabernet and Espresso.<br>12/16/2013: Interior Shades option introduced.  |
| 2014     | Ultimate Wood Inswing French Door<br>2 1/4Inch Arch Top | 2/24/2014: Introduced two Pearlescent colors (Bright Silver and Copper) and discontinued colors (Sherwood Green and Cobalt Blue) to the Ultimate Doors. Removed screen information and added new chapter for screen to manual.<br>4/28/2014: Added the Contemporary Panel and Contemporary Handle options.<br>6/23/2014: Added PVD color options for the Contemporary Handle; Oil Rubbed Bronze PVD and Satin Nickel PVD are now available.<br>8/25/2014: Panel drip and screws (A2408) will now match standard color. Screws for custom color will be stainless steel. |
| 2016     | Ultimate Wood Inswing French Door<br>2 1/4Inch Arch Top | 10/31/2016: Discontinued the wood species Cedro Macho for all products.   |
| 2023     | Ultimate Wood Inswing French Door<br>2 1/4Inch Arch Top | 2/27/2023: IZ3 certified Ultimate Wood 2 1/4" doors were moved to Discontinued - Limited Availability (DISC LA). This move allows for continued replacement and configured part support but does not allow ordering full IZ3 Wood Ultimate 2 1/4" door units. See Product Bulletin 861 for more information.<br>10/30/2023: An ERS coating became available as a standard option for current Triple Pane offerings. See Product Bulletin 904 for more details.  |

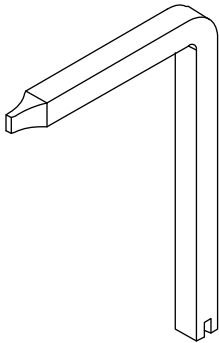


1. Head Jamb Brick Mould Casing
2. Head Jamb Weather Strip, V796
3. Radiused Glazing Bead, W12841
4. Vinyl Glazing Bead, V2447
5. Glazing Bead, W9949
6. Stile Weather Strip, V020
7. Sill Liner, W8661
8. Sill Weather Strip, V794
9. Hydro-Optimizer Reinforcement, A1221
10. Hydro-Optimizer, A1251
11. Panel Drip, V940
12. Head Jamb Stop, W6535
13. Interior Handle
14. Stile Weather Strip, V020
15. Mull Base Stile Weather Strip, V796
16. Adjustable Hinge
17. Astragal Base, W1455
18. Astragal, W7554
19. Exterior Handle



Construction Handle

| PN       |
|----------|
| 10830451 |



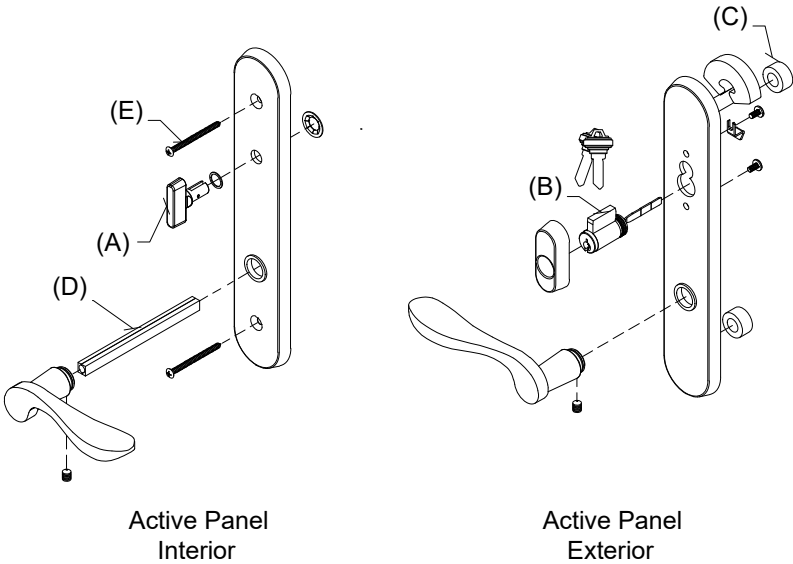
# Handle Assembly, Active, Keyed

Mortise Lock and Multi-Point Lock Systems (Schlage “C” Keyway)

## Includes:

- 1 - Interior lever with spindle, escutcheon plate and hardware
- 1 - Exterior lever with escutcheon plate and hardware
- 1 - Thumb turn with hardware (A)
- 1 - Keyed cylinder with housing and hardware, includes 2 keys (B)
- 1 - Exterior escutcheon plate gasket
- 2 - Lug Seal (C)
- 1 - Two piece spindle, 5.06” w/2 1/4” panel (D)
- 2 - #10–32 x 2 5/8” Phillips oval head machine screws (w/2 1/4” Panel) (E)

| Handle Assembly - 2 1/4” Panel |          |
|--------------------------------|----------|
| Color                          | PN       |
| Satin Taupe                    | 21448114 |
| Antique Brass                  | 21448116 |
| White                          | 21448119 |
| Satin Chrome                   | 21448112 |
| Oil Rubbed Bronze              | 21448111 |
| Oil Rubbed Bronze PVD          | 21448118 |
| Brass PVD                      | 21448160 |
| Satin Nickel PVD               | 21448110 |
| Dark Bronze                    | 21448120 |
| Polished Chrome                | 21448117 |
| Matte Black                    | 21448131 |



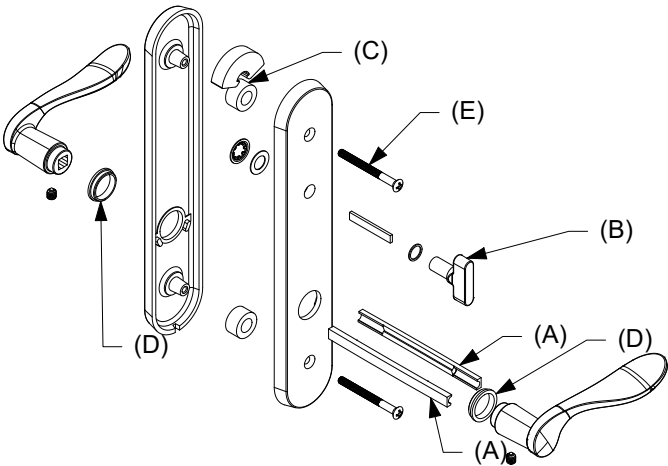
# Handle Assembly, Active, Non-Keyed

Mortise Lock and Multi-Point Lock Systems (Schlage “C” Keyway)

## Includes:

- 2 - Levers
- 2 - Lever bushings (D)
- 2 - Lug seals (C)
- 1 - Interior escutcheon
- 1 - Exterior escutcheon
- 1 - Thumb turn with actuator/tail piece (B)
- 1 - Two piece spindle, 5.06” w/2 1/4” panel (A)
- 2 - #10–32 x 2 5/8” Phillips oval head machine screws (w/2 1/4” Panel) (E)
- 2 - Set screws
- 1 - Allen wrench
- 1 - Installation instruction

| Handle Assembly - 2 1/4” Panel |          |
|--------------------------------|----------|
| Color                          | PN       |
| Satin Taupe                    | 21448174 |
| Antique Brass                  | 21448180 |
| White                          | 21448176 |
| Satin Chrome                   | 21448173 |
| Oil Rubbed Bronze              | 21448172 |
| Oil Rubbed Bronze PVD          | 21448170 |
| Brass PVD                      | 21448177 |
| Satin Nickel PVD               | 21448181 |
| Dark Bronze                    | 21448178 |
| Polished Chrome                | 21448175 |
| Matte Black                    | 21448179 |

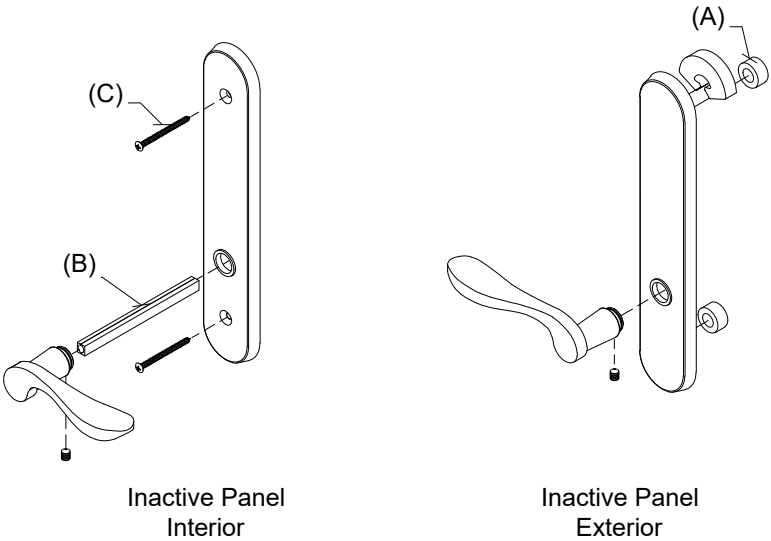


# Handle Assembly, Inactive/Dummy

## Includes:

- 1 - Interior lever with spindle, escutcheon plate and hardware
- 1 - Exterior lever with escutcheon plate and hardware
- 1 - Exterior escutcheon plate gasket
- 1 - Exterior escutcheon plate
- 2 - Lug seals (A)
- 1 - Two piece spindle, 5.06" (w/2 1/4" panel) (B)
- 2 - #10-32 x 2 5/8" Phillips oval head machine screws (w/2 1/4" Panel) (C)

| Handle Assembly - 2 1/4" Panel |          |
|--------------------------------|----------|
| Color                          | PN       |
| Satin Taupe                    | 21448151 |
| Antique Brass                  | 21448147 |
| White                          | 21448150 |
| Satin Chrome                   | 21448153 |
| Oil Rubbed Bronze              | 21448154 |
| Oil Rubbed Bronze PVD          | 21448145 |
| Brass PVD                      | 21448161 |
| Satin Nickel PVD               | 21448133 |
| Dark Bronze                    | 21448162 |
| Polished Chrome                | 21448148 |
| Matte Black                    | 21448163 |



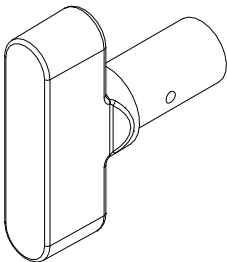
## Thumb Turn, Traditional

For Keyed Handle

**Includes:**

- Thumb Turn Washer
- Thumb Turn Push Nut

| No Tail Piece/Actuator<br>(for keyed handle) |          |
|--|----------|
| Color  | PN       |
| Antique Brass                                | 10148483 |
| Satin Chrome                                 | 10148482 |
| Oil Rubbed Bronze                            | 10148481 |
| Oil Rubbed Bronze PVD                        | 10148485 |
| Polished Chrome                              | 10148488 |
| Brass PVD                                    | 10148484 |
| Satin Nickel PVD                             | 10148487 |
| Satin Taupe                                  | 10148486 |
| Dark Bronze                                  | 10148479 |
| White  | 10148489 |
| Matte Black                                  | 10148480 |



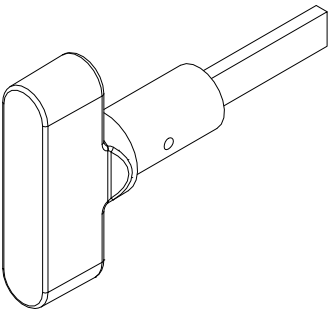
## Thumb Turn, Traditional with Actuator/Tail Piece

For Non-Keyed Handle

**Includes:**

- Actuator/Tailpiece
- Thumb Turn Washer
- Thumb Turn Push Nut

| With Tail Piece/Actuator<br>(for non-keyed handle) |          |
|--|----------|
| Color  | PN       |
| Antique Brass                                      | 10148495 |
| Satin Chrome                                       | 10148494 |
| Oil Rubbed Bronze                                  | 10148493 |
| Oil Rubbed Bronze PVD                              | 10148497 |
| Polished Chrome                                    | 10148500 |
| Brass PVD  | 10148496 |
| Satin Nickel PVD                                   | 10148499 |
| Satin Taupe  | 10148498 |
| Dark Bronze  | 10148491 |
| White  | 10148501 |
| Matte Black  | 10148492 |

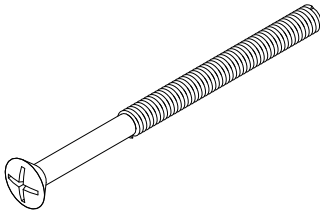




# #10-32 x 2 5/8” Phillips Oval Head Machine Screw

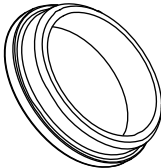
For 2 1/4” Panels

| Color                 | PN       |
|-----------------------|----------|
| Satin Taupe           | 11800237 |
| Antique Brass         | 11800234 |
| Satin Chrome          | 11800233 |
| Polished Chrome       | 11800239 |
| White                 | 11800240 |
| Oil Rubbed Bronze     | 11800232 |
| Oil Rubbed Bronze PVD | 11800236 |
| Brass PVD             | 11800235 |
| Satin Nickel PVD      | 11800238 |
| Dark Bronze           | 11800231 |
| Matte Black           | 11800179 |



## Lever Bushing, Traditional

| Color   | PN       |
|---------|----------|
| Clear   | 02062201 |
| Gray    | 10148448 |
| Gold    | 10148447 |
| Natural | 02062202 |
| Black   | 10148020 |

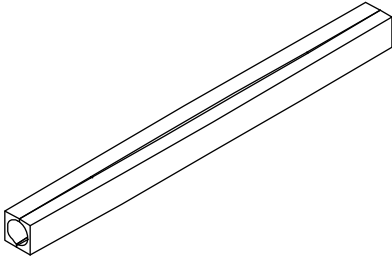


## Spindle/Spindle Extension Kit

### Includes:

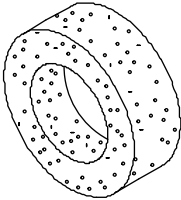
- 1 - 2 pc. Spindle
- 2 - Set screws

| Length | PN       |
|--------|----------|
| 5.06”  | 18900393 |



## Lug Seal

| PN       |
|----------|
| 00142046 |

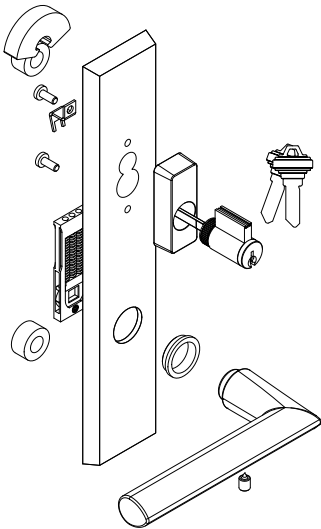


## Contemporary Handle, Exterior, Active, Keyed

**Includes:**

- 1 - Handle
- 1 - Exterior escutcheon with bushing
- 1 - Keyed cylinder, includes 2 keys
- 2 - Lug seals
- 1 - Spring cartridge
- 1 - Set screw
- 1 - Installation instruction
- 1 - Hex wrench

| LH Inswing Panel uses LH PN<br>RH Inswing Panel uses RH PN |          |          |
|--|----------|----------|
| Color  | LH PN    | RH PN    |
| Matte Black  | 11870120 | 11870112 |
| Satin Nickel PVD   | 11870122 | 11870114 |
| Oil Rubbed Bronze PVD                                      | 11870124 | 11870116 |
| Dark Bronze  | 11870126 | 11870118 |



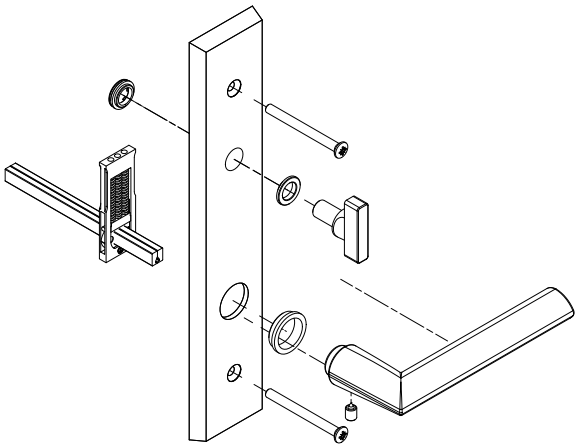
LH shown

## Contemporary Handle, Interior, Active, Keyed

**Includes:**

- 1 - Handle
- 1 - Interior escutcheon with bushings
- 1 - Spring cartridge
- 1 - Thumb turn
- 2 - Machine screws, 2 1/4" Doors
- 2 - Machine screws, 1 3/4" Doors
- 1 - Split spindle, 2 1/4" Doors
- 1 - Split spindle, 1 3/4" Doors
- 1 - Set screw
- 1 - Installation instruction
- 1 - Hex wrench

| LH Inswing Panel uses RH PN<br>RH Inswing Panel uses LH PN |          |          |
|--|----------|----------|
| Color  | LH PN    | RH PN    |
| Matte Black  | 11870104 | 11870097 |
| Satin Nickel PVD   | 11870106 | 11870098 |
| Oil Rubbed Bronze PVD                                      | 11870108 | 11870100 |
| Dark Bronze  | 11870110 | 11870102 |



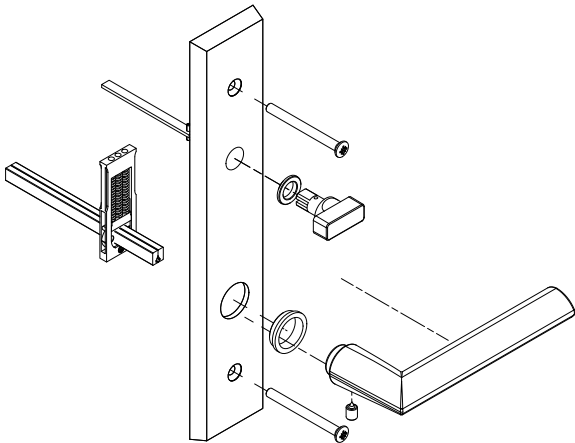
RH shown

# Contemporary Handle, Interior, Active, Non-Keyed

## Includes:

- 1 - Handle
- 1 - Interior escutcheon with bushings
- 1 - Spring cartridge
- 1 - Thumb turn
- 2 - Machine screws, 2 1/4" Doors
- 2 - Machine screws, 1 3/4" Doors
- 1 - Split spindle, 2 1/4" Doors
- 1 - Split spindle, 1 3/4" Doors
- 1 - Set screw
- 1 - Installation instruction
- 1 - Hex wrench

| LH Inswing Panel uses RH PN<br>RH Inswing Panel uses LH PN |          |          |
|--|----------|----------|
| Color  | LH PN    | RH PN    |
| Matte Black  | 11870136 | 11870128 |
| Satin Nickel PVD   | 11870138 | 11870130 |
| Oil Rubbed Bronze PVD                                      | 11870139 | 11870132 |
| Dark Bronze  | 11870143 | 11870133 |



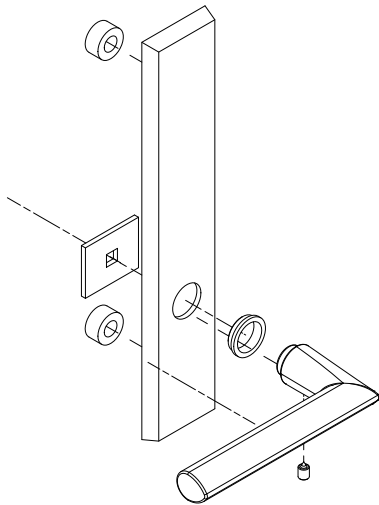
RH shown

# Contemporary Handle, Exterior, Non-Keyed, Inactive/Dummy

## Includes:

- 1 - Handle
- 1 - Exterior escutcheon with bushings
- 2 - Lug seals
- 1 - Fixing plate
- 1 - Set screw
- 1 - Installation instruction
- 1 - Hex wrench

| LH Inswing Panel uses LH PN<br>RH Inswing Panel uses RH PN |          |          |
|--|----------|----------|
| Color  | LH PN    | RH PN    |
| Matte Black  | 11870153 | 11870145 |
| Satin Nickel PVD   | 11870154 | 11870146 |
| Oil Rubbed Bronze PVD                                      | 11870156 | 11870148 |
| Dark Bronze  | 11870158 | 11870149 |



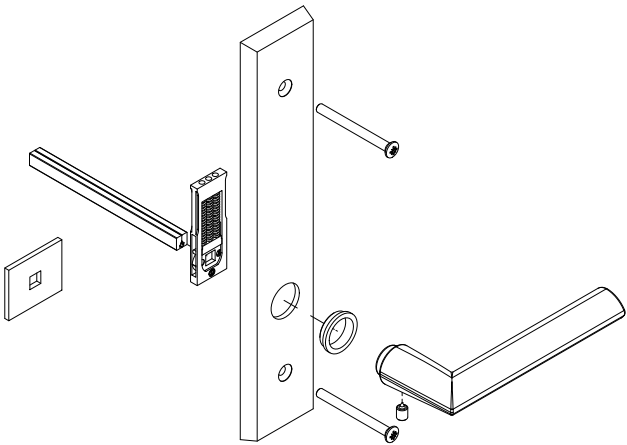
LH shown

# Contemporary Handle, Interior, Inactive/Dummy

## Includes:

- 1 - Handle
- 1 - Escutcheon with bushing
- 1 - Dummy fixing plate
- 1 - Spring cartridge
- 2 - Machine screws, 2 1/4" Doors
- 2 - Machine screws, 1 3/4" Doors
- 1 - Split spindle, 2 1/4" Doors
- 1 - Split spindle, 1 3/4" Doors
- 1 - Set screw
- 1 - Installation instruction
- 1 - Hex wrench

| LH Inswing Panel uses RH PN<br>RH Inswing Panel uses LH PN |          |          |
|--|----------|----------|
| Color  | LH PN    | RH PN    |
| Matte Black  | 11870169 | 11870160 |
| Satin Nickel PVD   | 11870171 | 11870162 |
| Oil Rubbed Bronze PVD                                      | 11870172 | 11870164 |
| Dark Bronze  | 11870174 | 11870166 |



RH shown

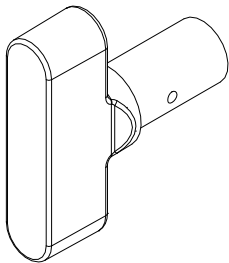
## Thumb Turn, Contemporary

For Keyed Handle

**Includes:**

- Thumb Turn Washer
- Thumb Turn Push Nut

| No Tail Piece/Actuator<br>(for keyed handle) |          |
|--|----------|
| Color  | PN       |
| Oil Rubbed Bronze PVD                        | 10148485 |
| Satin Nickel PVD                             | 10148487 |
| Dark Bronze                                  | 10148479 |
| Matte Black                                  | 10148480 |



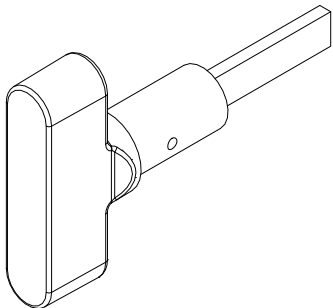
## Thumb Turn, Contemporary with Actuator/Tail Piece

For Non-Keyed Handle

**Includes:**

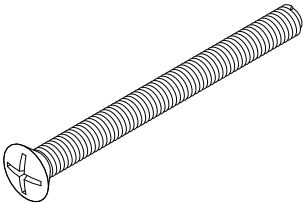
- Actuator/Tailpiece
- Thumb Turn Washer
- Thumb Turn Push Nut

| With Tail Piece/Actuator<br>(for non-keyed handle) |          |
|--|----------|
| Color  | PN       |
| Oil Rubbed Bronze PVD                              | 10148497 |
| Satin Nickel PVD                                   | 10148499 |
| Dark Bronze  | 10148491 |
| Matte Black  | 10148492 |



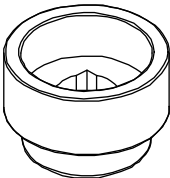
# M5 x 55mm Oval Head Machine Screw

| Color                 | PN       |
|-----------------------|----------|
| Oil Rubbed Bronze PVD | 10148404 |
| Satin Nickel PVD      | 10148457 |
| Dark Bronze           | 10148455 |
| Matte Black           | 11800694 |



# Handle Extension

| Color                 | PN       |
|-----------------------|----------|
| Oil Rubbed Bronze PVD | 10148421 |
| Satin Nickel PVD      | 10148422 |
| Dark Bronze           | 10148420 |
| Matte Black           | 10148445 |



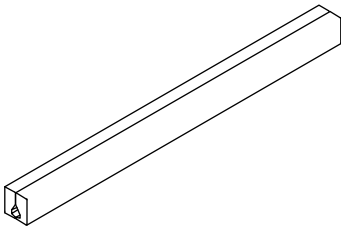
# Spindle Kit

## Includes:

- 1 - 2 pc. Spindle
- 2 - Set screws

NOTE: Longer length spindles are intended for use with the 3/4" Handle Extension.

| 2 1/4" Panels |          |
|---------------|----------|
| Length        | PN       |
| 5 1/8"        | 10148458 |
| 5 29/32"      | 10148459 |



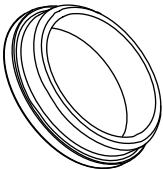
# Spring Cartridge

| PN       |
|----------|
| 10830452 |



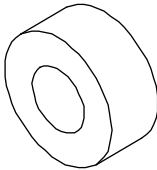
# Lever Bushing, Contemporary

| Color   | PN       |
|---------|----------|
| Gray    | 10148448 |
| Natural | 02062202 |
| Black   | 10148020 |



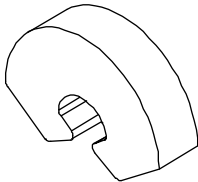
# Gasket Post, Lug Seal

| PN       |
|----------|
| 10148404 |



# Gasket, Top Backplate

| PN       |
|----------|
| 10148405 |



# Keyed Cylinder, Lock

(Schlage “C” Keyway)  
For service replacement only.

**Includes:**

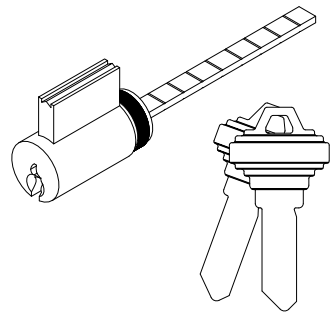
2 - Keys

NOTE: For Keyed Alike orders, use program C87P2

Polished Chrome, White, Satin Nickel PVD, Matte Black use  
Chrome Face

Satin Taupe, Antique Brass, Satin Chrome, Oil Rubbed  
Bronze, Oil Rubbed Bronze PVD, Brass PVD, Dark Bronze  
use Brass Face

| Color       | PN       |
|-------------|----------|
| Brass Face  | 10830212 |
| Chrome Face | 10830209 |

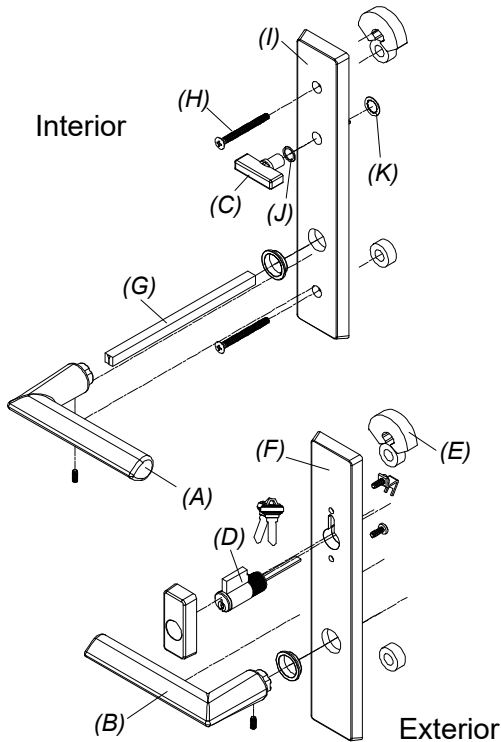


## Handle Assembly, Active Panel

### Includes:

- 1 - Interior lever with spindle, escutcheon plate and hardware (A)
- 1 - Exterior lever with escutcheon plate and hardware (B)
- 1 - Thumb turn with hardware (C)
- 1 - Keyed cylinder with housing and hardware, includes 2 keys (D)
- 1 - Exterior escutcheon plate gasket (E)
- 1 - Exterior escutcheon plate (F)
- 1 - Two piece spindle (G)
- 2 - M5 x 65mm Phillips oval head machine screws (H)
- 1 - Interior escutcheon plate (I)
- 1 - Thumb turn washer (J)
- 1 - Thumb turn push nut (K)

| Color       | PN       |
|-------------|----------|
| Satin Taupe | 21448121 |

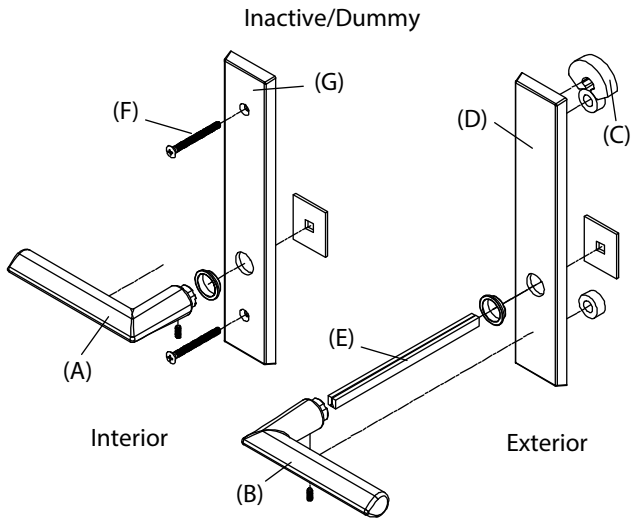


## Handle Assembly, Inactive

### Includes:

- 1 - Interior lever with spindle, escutcheon plate and hardware (A)
- 1 - Exterior lever with escutcheon plate and hardware (B)
- 1 - Exterior escutcheon plate gasket (C)
- 1 - Exterior escutcheon plate (D)
- 1 - Two piece spindle (E)
- 2 - M5 x 65mm Phillips oval head machine screws (F)
- 1 - Interior escutcheon plate (G)

| Color       | PN       |
|-------------|----------|
| Satin Taupe | 21448125 |

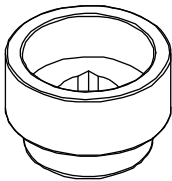




### 3/4” Handle Extension

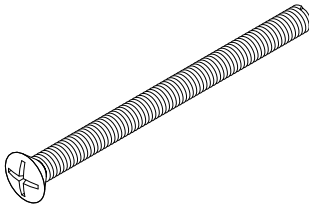
Requires 3/4” Spindle Extension

| Color       | PN       |
|-------------|----------|
| Satin Taupe | 10148419 |

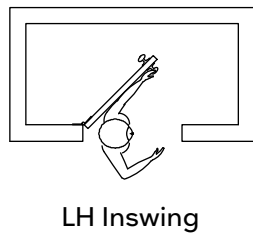


### M5 x 65mm Phillips Oval Head Machine Screw

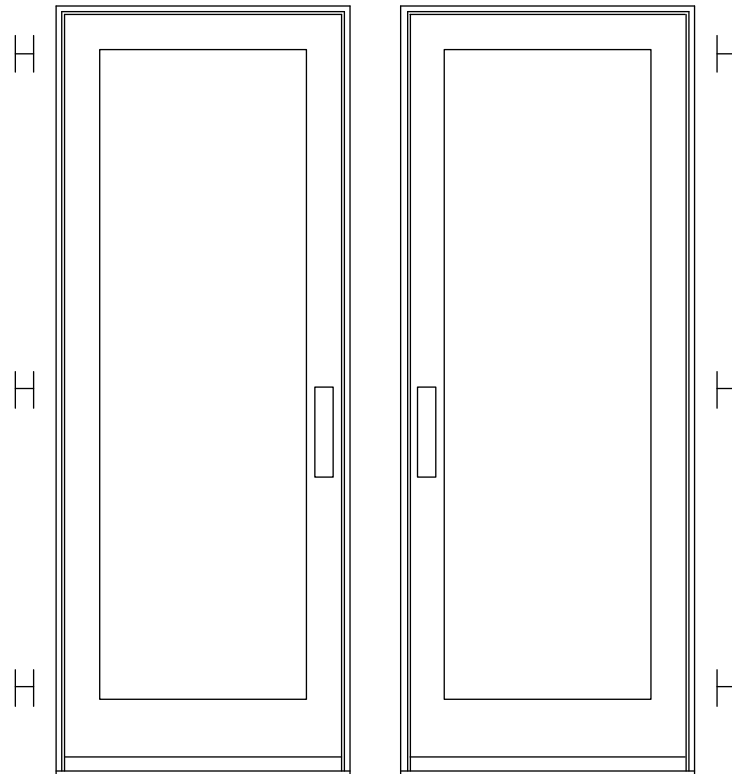
| Color       | PN       |
|-------------|----------|
| Satin Taupe | 10148454 |



**NOTE: Always view units  
from the exterior for handing.  
H=Hinge location**



**LH Inswing**

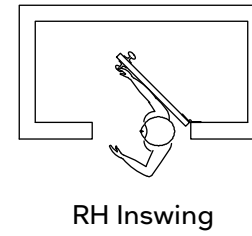


**X-LH Inswing**

This panel uses the  
left hand hinge

**X-RH Inswing**

This panel uses the  
right hand hinge



**RH Inswing**

Hinge Kit, Adjustable

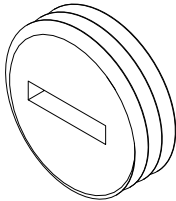
Includes:

- 1 - Adjustable hinge
- 1 - #10 x 2 1/2" Phillips flat head wood screws (jamb)
- 5 - #10 x 3/4" Phillips flat head wood screws (jamb, stationary stile)
- 4 - #8 x 1 1/2" Phillips flat head wood screws (panel)

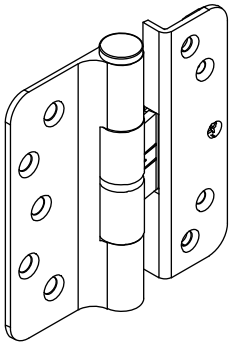
NOTE: Hinge part number includes the color matched screws, If you need to order the screws separately, they are listed below.

Adjustment Cover, Adjustable Hinge

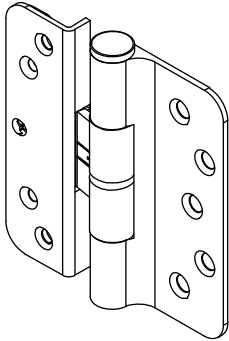
| PN       |
|----------|
| 11844039 |



| Adjustable Hinge Package - Color and Part Number |          |          | Matching Screw Color |
|--|----------|----------|----------------------|
| Hinge Color                                      | LH PN    | RH PN    |                      |
| Satin Taupe (TP)                                 | 02101216 | 02101227 | TP                   |
| Goldtone (GT)                                    | 02101213 | 02101224 | GT                   |
| Silver Frost (SF)                                | 02101218 | 02101229 | Stainless Steel      |
| Dark Bronze (DKBZ)                               | 02101217 | 02101228 | DKBZ                 |
| Antique Brass (AB)                               | 02101210 | 02101221 | DKBZ                 |
| White (WH)                                       | 02101214 | 02101225 | WH                   |
| Satin Chrome (SC)                                | 02101212 | 02101223 | Stainless Steel      |
| Oil Rubbed Bronze (ORBZ)                         | 02101219 | 02101230 | DKBZ                 |
| Oil Rubbed Bronze PVD (ORBZ)                     | 02101211 | 02101222 | DKBZ                 |
| Brass PVD (BS)                                   | 02101215 | 02101226 | BS PVD               |
| Satin Nickel (SN) PVD                            | 02101220 | 02101231 | Stainless Steel      |
| Polished Chrome (PC)                             | 02101234 | 02101235 | Stainless Steel      |
| Matte Black (MBK)                                | 02101236 | 02101237 | MBK                  |



LH Hinge



RH Hinge

| Individual Screw Description   | Color and Part Number |          |          |          |          |                 |          |          |
|--|-----------------------|----------|----------|----------|----------|-----------------|----------|----------|
|  | TP                    | GT       | WH       | DKBZ     | BS PVD   | Stainless Steel | Chrome   | MBK      |
| #8 x 1 1/2" Phillips flat head wood screws (panel). 4 - per hinge.   | 11865177              | 11865172 | 11865173 | 02058013 | 11865176 | 11865175        |          | 11865178 |
| #10 x 3/4" Phillips flat head wood screws (jamb) (stationary stile). 5 -per hinge.   | 11800674              | 11800670 | 11800671 | 11800669 | 11800673 |                 | 11800672 | 11800677 |
| #10 x 2 1/2" Phillips flat head wood screws (jamb). 1 - per hinge.   | 11800653              | 11800632 | 11800637 | 11800644 | 10148185 | 11800639        |          | 11800696 |
| NOTE: Part numbers for these screws are sold in packages of 4 screws and includes 1 - 5/32" Allen wrench. (Long Hinge Screw Package) |                       |          |          |          |          |                 |          |          |

## Hinge 4 1/2" x 4 1/2" Ball Bearing

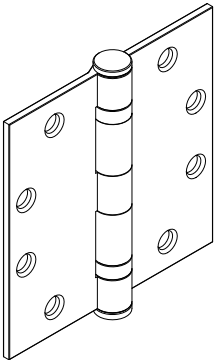
### Includes:

- 1 - Hinge
- 6 - #12 x 1" Phillips flat head wood screws
- 2 - #12 x 2 1/2" Phillips flat head screws

NOTE: Hinge part number includes the color matched screws, If you need to order the screws separately, they are listed below.

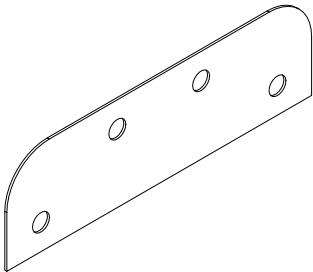
| Hinge Color                                  | PN       |
|--|----------|
| Stainless Steel                              | 02100162 |
| Satin Chrome/Brass                           | 02101166 |
| Bronze/Brass                                 | 02101167 |
| Brass  | 02101165 |
| Steel hinge available for Inswing Doors only |          |
| Satin Chrome/Steel                           | 02101163 |
| Bronze/Steel                                 | 02101164 |

| Screw Description                       | Color           | PN       |
|---|-----------------|----------|
| #12 x 1" Phillips flat head wood screws | Stainless Steel | 02056069 |
|   | Dark Bronze     | 02056010 |
|   | Brass           | 02056068 |
| #12 x 2 1/2" Phillips flat head screws  | Stainless Steel | 02010311 |
|   | Dark Bronze     | 02056067 |
|   | Brass           | 02010310 |



## 4 1/2" x 4 1/2" Hinge Shim

| PN       |
|----------|
| 18900502 |



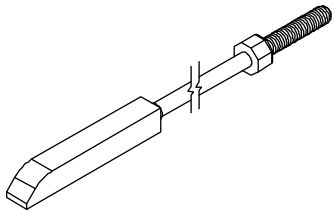
| Hinge Color          | Screw Color     |
|----------------------|-----------------|
| Stainless Steel      | Stainless Steel |
| Satin Chrome / Steel |                 |
| Satin Chrome / Brass |                 |
| Bronze / Steel       | Dark Bronze     |
| Bronze / Brass       |                 |
| Brass                | Brass           |

|            |
|------------|
| SC = US26D |
| BZ = US10A |
| BS = US3   |
| SS = US32D |

## Locking Rod Assembly, Multi-Point Lock

| Height     | Top Locking Rod Length | Color           | PN       |
|------------|------------------------|-----------------|----------|
| CN 8-0 ht  | 51 7/16"               | Stainless Steel | 05700179 |
| CN 10-0 ht | 75 7/16"               |                 | 05700196 |

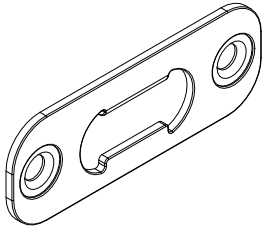
| Height     | Bottom Locking Rod Length | Color           | PN       |
|------------|---------------------------|-----------------|----------|
| CN 8-0 ht  | 34 9/32"                  | Stainless Steel | 05700170 |
| CN 10-0 ht |                           |                 |          |



## Strike Plate, Sill/Head Jamb

NOTE: Used at sill

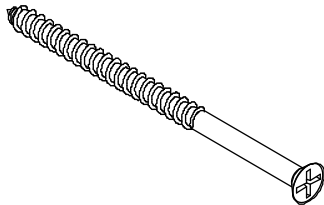
| PN       |
|----------|
| 10815201 |



## #10 x 3" Phillips Flat Head Screws

For Strike Plate, Sill/Head Jamb

| Color           | PN       |
|-----------------|----------|
| Stainless Steel | 02056011 |



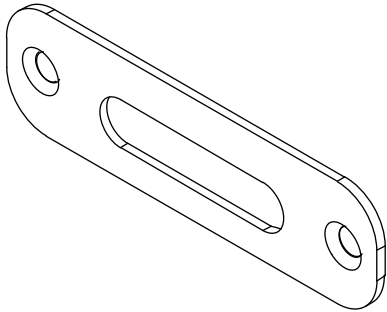
## Head Strike

RT2 one wide

### Includes:

- 1 - Strike
- 2 - #10 x 3" Phillips flat head screws

| PN       |
|----------|
| 05700319 |

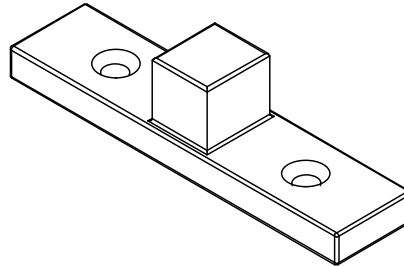


## Sill Bolt, Stationary Panel

### Includes:

- 2- #8 x 3" Phillips flat head wood screw

| Color         | PN       |
|---------------|----------|
| Zinc Die Cast | 11101856 |

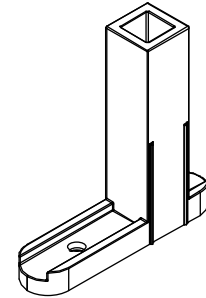


## Shoot Bolt Guide

### Includes:

- 1 - Shoot bolt guide
- 1- #8 x 1 1/2" Phillips pan head wood screw

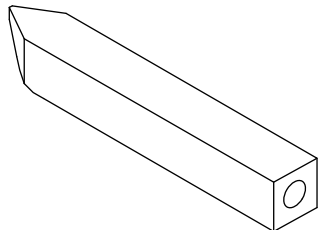
| PN       |
|----------|
| 10815199 |



## Shoot Bolt, Beveled

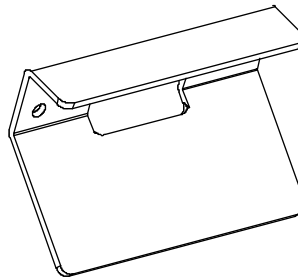
RT2 one wide

| PN       |
|----------|
| 10815101 |



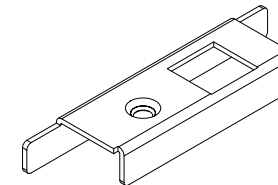
## Sill Strike Backer Plate

| PN       |
|----------|
| 10148009 |



## Stile End Plate

| Handing | PN       |
|---------|----------|
| LH      | 10148008 |
| RH      | 10148007 |

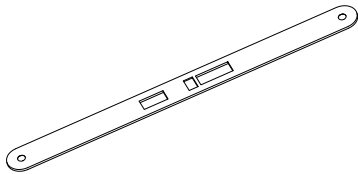


## Cover Plate, Active Mortise Lock or Multi-Point Lock

### Includes:

- 1 - Cover plate
- 2 - #8 x 1" Brass Phillips flat head wood screws\*

| Color                 | PN       |
|-----------------------|----------|
| Stainless Steel       | 05700306 |
| Antique Brass         | 05700307 |
| Oil Rubbed Bronze PVD | 05700308 |
| Brass PVD             | 10148179 |

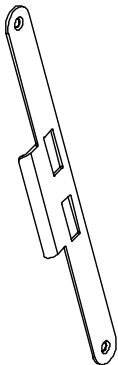


## Strike Plate, Jamb and Inactive Panel - Mortise Lock or Multi-Point Lock

### Includes:

- 1 - Jamb strike plate
- 2 - #8x1" Brass Phillips flat head wood screws\*

| Color                 | PN       |
|-----------------------|----------|
| Stainless Steel       | 05700300 |
| Antique Brass         | 05700301 |
| Oil Rubbed Bronze PVD | 05700302 |
| Brass PVD             | 10148177 |



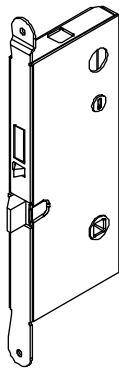
**\*Stainless Steel - 11800645, Dark Bronze - 11800652, Brass PVD - 11800536**

Note: Dark Bronze screws are used with Antique Brass and Oil Rubbed Bronze PVD

# Mortise Lock, Active Multi-Point Lock

(Latch, dead bolt and head/foot shoot bolts)

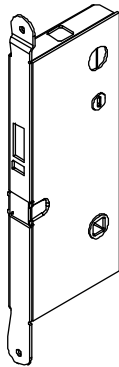
|          |
|----------|
| PN       |
| 05700130 |



# Mortise Lock, Inactive Panel Multi-Point Lock

(Head/foot shoot bolts)

|          |
|----------|
| PN       |
| 05700131 |

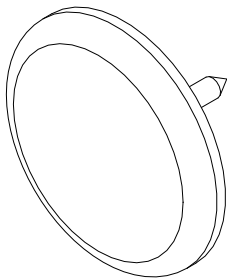




## Jamb Spacer Tack, Stationary Panel

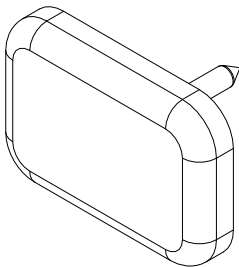
3/4" Diameter Head

| PN       |
|----------|
| 11860423 |



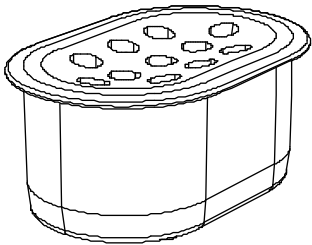
## Head Jamb Spacer Tack, Stationary Panel

| PN       |
|----------|
| 11860424 |



## Drain Plug, Sill

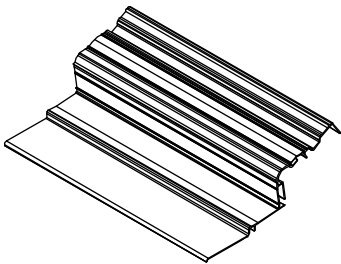
| Color  | PN       |
|--------|----------|
| Beige  | 10500253 |
| Bronze | 10500249 |

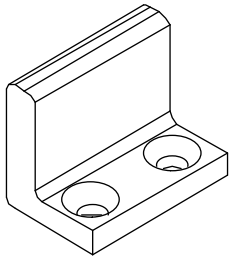


## Threshold Protector

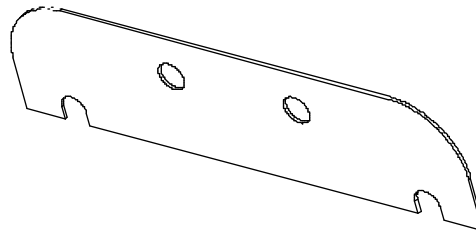
30" length

| Qty    | PN       |
|--------|----------|
| EA     | 11869675 |
| Pkg 20 | 11869676 |

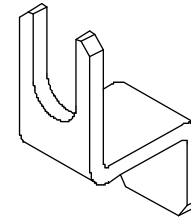




Header Reinforcement Bracket  
No longer available. Use current part.  
Usage dates: Prior to 8/31/2009



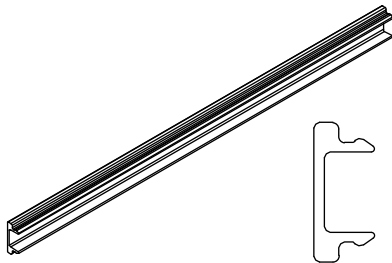
4 1/2" x 4 1/2" Hinge Shim Ultimate Frame  
No longer available. Use current part.



Stop clip with screws  
No longer available. Use current part.

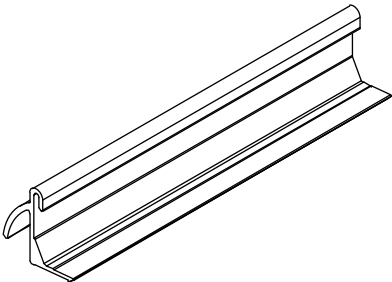
When ordering replacement parts, specify:

- 1. Profile number;
- 2. Rough opening;
- 3. Length;
- 4. Handing;
- 5. Finish (where applicable),

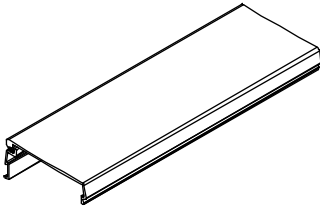


Hydro-Optimizer Reinforcement, A1222

| Length | Color  | PN       |
|--------|--------|----------|
| 144"   | Beige  | 18548499 |
|        | Bronze | 18548399 |



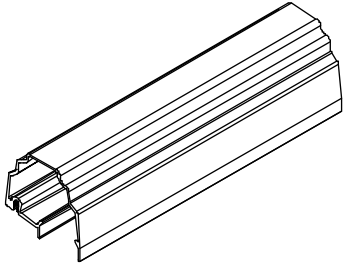
Hydro-Optimizer, A125  
Available in Beige or Bronze



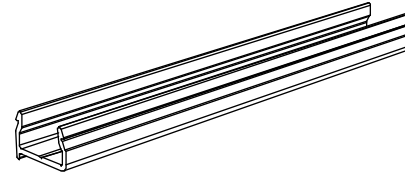
Head Jamb/Jamb Parting Stop, A836

**When ordering replacement parts, specify:**

1. Profile number;
2. Rough opening;
3. Length;
4. Handing;
5. Finish (where applicable),



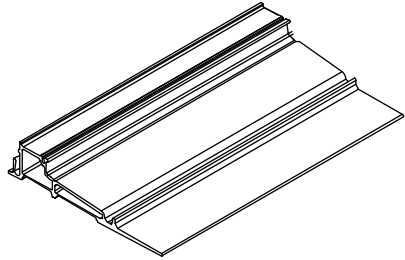
**Astragal Cladding, A772**



**Mullion Casing Base, A771**

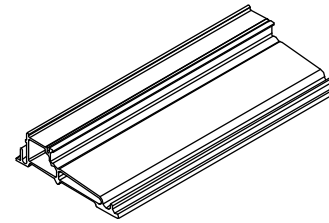
**When ordering replacement parts, specify:**

1. Profile number;
2. Rough opening;
3. Length;
4. Handing;
5. Finish (where applicable),



**Ultrex Sill, 6 9/16" Jamb, F257**

Available in Beige or Bronze

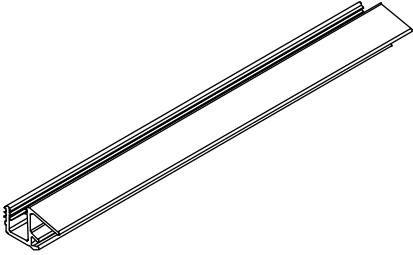


**Ultrex Sill, 4 9/16" Jamb, F256**

Available in Beige or Bronze

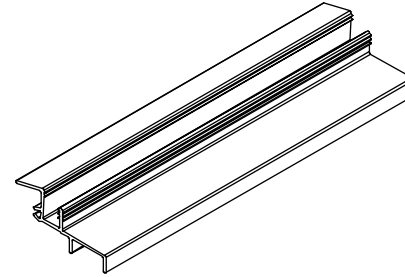
**When ordering replacement parts, specify:**

1. Profile number;
2. Rough opening;
3. Length;
4. Handing;
5. Finish (where applicable),



**Panel Drip, V940**

Available in Beige or Black



**Stationary Panel Drip/Sill Spacer, V941**

Available in Beige or Black



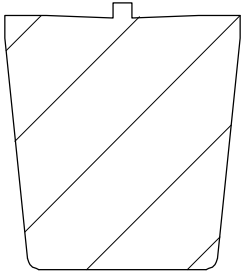
**V1304 Weather Strip, Frame**

No longer available. Use current part.

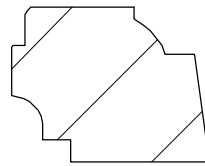
Usage dates: Prior to 3-30-2009

**When ordering replacement parts, specify:**

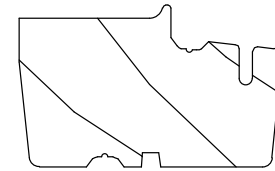
1. Profile number;
2. Rough opening;
3. Length;
4. Handing;
5. Finish (where applicable),



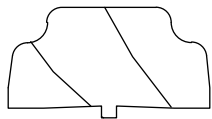
**Mull Casing, W8775**



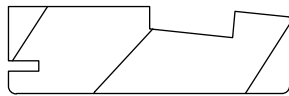
**Glazing Cap, W9949**



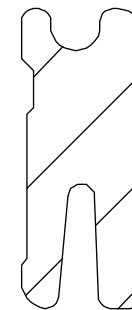
**First Mull Casing and Astragal, W1455**



**Astragal Cover and Transom Mull Cover,  
W7554**



**Head Jamb and Jamb Part Stop, W6535**

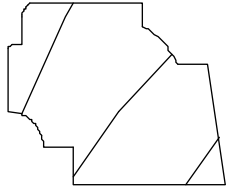


**Sill Liner (Oak), W8661**



**When ordering replacement parts, specify:**

1. Profile number;
2. Rough opening;
3. Length;
4. Handing;
5. Finish (where applicable),

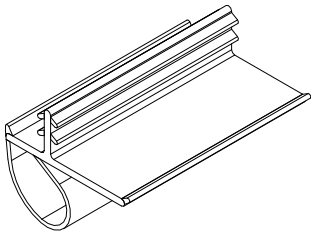


**Glazing Cap, W4019**

# Offset Bulb Weather Strip, Parting Stop, Frame, Mull Casing, Transom and Astragal

V796

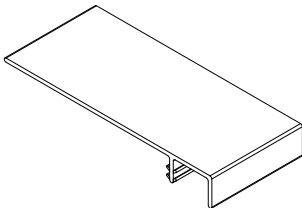
| Length     | Color | PN       |
|------------|-------|----------|
| 75 43/64"  | Beige | 15170866 |
|            | Black | 15170867 |
| 104 7/8"   | Beige | 15170090 |
|            | Black | 15170091 |
| 115 41/64" | Beige | 15170810 |
|            | Black | 15170811 |
| 189 11/16" | Beige | 15173298 |
|            | Black | 15173398 |



# Weather Strip, Frame

V1707

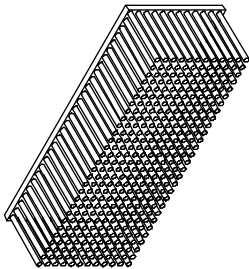
| Length | Color | PN       |
|--------|-------|----------|
| 120"   | Beige | 11191299 |
|        | Black | 11191399 |



# Dust Block, Part Stop

1 3/8" x 3/8" x 1/2"

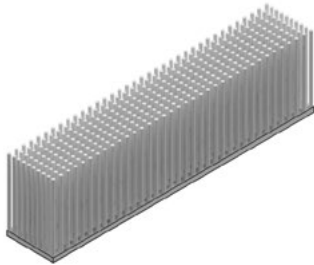
| Color | PN       |
|-------|----------|
| Gray  | 15600010 |
| Beige | 15600011 |



# Dust Block, Astragal or Panel

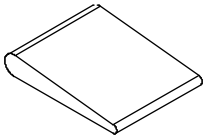
1 3/8" x 1/4" x 1/2"

| PN       |
|----------|
| 10500049 |



### Small Corner Seal

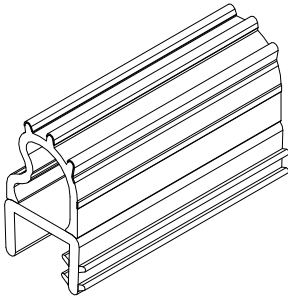
| Color | PN       |
|-------|----------|
| Beige | 01040368 |
| Black | 01040369 |



### Flex-Bulb Weather Strip, Sill

V794

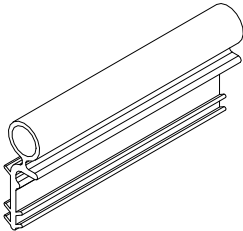
| Length   | Color | PN       |
|----------|-------|----------|
| 92 3/4"  | Beige | 15180780 |
| 164 3/4" | Beige | 15180798 |
| 164 3/4" | Black | 15180799 |



### Weather Strip, Stile

V020

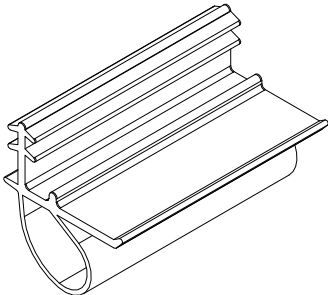
| Length    | Beige PN | Black PN |
|-----------|----------|----------|
| 79 9/16"  | 11197968 | N/A      |
| 92 15/16" | 11197982 | N/A      |
| 150"      | 11197999 | 11197998 |



### Inactive Panel Stile Center

V780

| Length | Color | PN       |
|--------|-------|----------|
| 150"   | Beige | 15174099 |
|        | Black | 15174098 |



## When ordering replacement panels, specify:

NOTE: Weather strip is included with all panels (where applicable).

1. OM of panel (NOTE: OM of panel does not include astragal, mull casing or sweep);
2. Active, Inactive or Stationary;
  - a. Active - comes prepped for multi-point mortise lock and standard Marvin handle set. If Marvin Architectural Hardware prep is needed, specify brand.
  - b. Inactive - comes prepped for multi-point lock and standard Marvin handle-set. If Marvin Architectural Hardware prep is needed, specify brand.
  - c. Stationary - specify configuration and astragal or mull casing (if applicable).
  - d. Panel style
3. Handing;
4. Glazing;
5. Finish;
6. Glazing bead profile
  - a. bevel
  - b. square.
    - Active panels include panel sweep and multi-point mortise lock system.
    - Inactive panels include sweep, astragal, and multi-point lock system.
    - Stationary 1 wide panels include panel sweep.

