



Ultimate Wood Outswing French Door

Replacement Parts

Specifications and technical data are subject to change without notice.

Numbers listed in () parentheses are metric equivalents in millimeters rounded to the nearest whole number.

Suggested fasteners are not included and must be ordered separately.

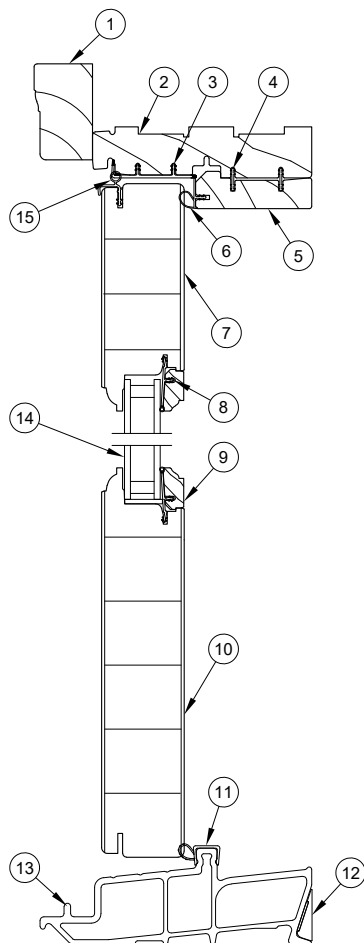
Illustrations are not to scale.

Contents

| | |
|---|----|
| Product History..... | 2 |
| Part Identification - Operator XX L..... | 4 |
| Part Identification - Stationary and Sidelite..... | 5 |
| Part Identification - Jamb Details..... | 6 |
| Part Identification - Direct Glaze Rectangle..... | 7 |
| Installation Parts..... | 8 |
| Traditional Handle..... | 9 |
| Contemporary Handle..... | 14 |
| Handle - Keyed Cylinder..... | 19 |
| Handle Set - Discontinued Limited Availability (LA)..... | 20 |
| Handle Set - Discontinued No Availability (NA)..... | 21 |
| Hinge Hanging Location..... | 22 |
| Hinges..... | 23 |
| Locking Hardware..... | 25 |
| Miscellaneous Parts..... | 28 |
| Miscellaneous Parts - Discontinued Limited Availability (LA)..... | 29 |
| Aluminum Parts..... | 30 |
| Fiberglass Parts..... | 31 |
| Vinyl Parts..... | 32 |
| Wood Parts - Configured Parts in OMS..... | 34 |
| Wood Parts..... | 35 |
| Wood Parts - Discontinued No Availability (NA)..... | 36 |
| Weather Strip..... | 37 |
| Weather Strip - Discontinued Limited Availability (LA)..... | 39 |
| Panel Replacement..... | 40 |

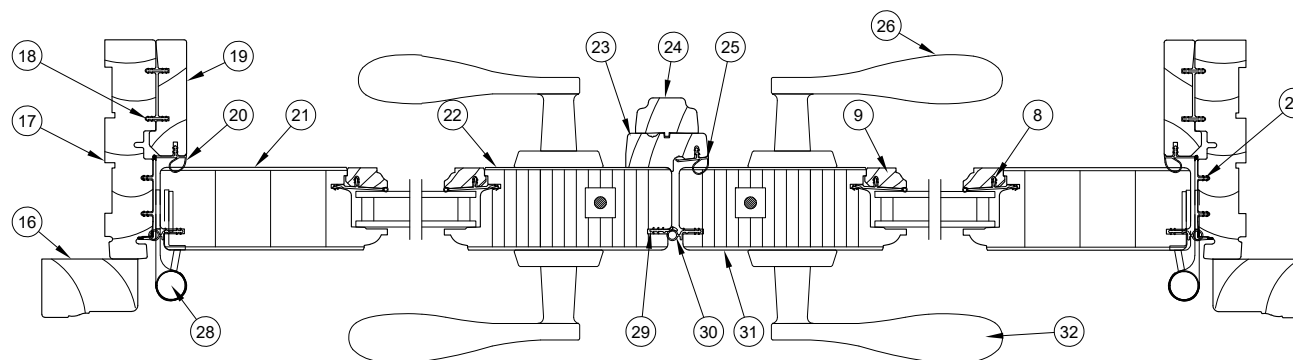
| Produced | Unit Type | Features and Changes |
|----------|---|---|
| 1989 | Wood Outswing French Door | Unit features 3/4"insulating glass, 4 9/16" jambs, 2 of the hinges feature non-removable pins, no panel bore or lock (standard). Unit offered in CN 6-8, CN 7-0 and CN 8-0 heights. Unit featured solid brass head and foot bolts and optional solid brass lever set. Sidelites and transoms introduced. |
| 1991 | Wood Outswing French Door | CN 6-5 height introduced including a 4 panel entrance system with continuous head jamb and sill. External component parts changed from brown to beige. Lexan sill changed from brown to beige. Optional multi-point (Essve) hardware system introduced. Solid brass hinges introduced. |
| 1992 | Wood Outswing French Door | Simulated divided lite option introduced. |
| 1994 | Wood Outswing French Door | Beige Lexan sill changed to beige composite sill. Exterior factory finish available utilizing an interior glazed panel for 1 lite and ADL insulating glass. |
| 2000 | Wood Outswing French Door, Transoms and Sidelites | 1/17/2000: New door line based on Inswing Door. Frame and sash components common when possible. Door rated to DP 20, DP 30 or DP 40 based on options and sizes selected. Transom sash in line with door sash below. Center mortise lock (center passage latch with independent dead bolt) replaces lever set with dead bolt utilizing Multi-point inswing FD handles. Multi-point (Amerock) lock available (std). 8/4/2000 PVD brass hardware available on Ultimate Outswing French Door. Limited factory mulling options. Non-handed handle sets. Product Bulletin 274. |
| 2002 | Wood Outswing French Door DISC LA PRE 2012 | 3/02: Stone White becomes a standard color. Arctic White transitions to a select color. 8/0 height decreases by 2 1/2 inches. |
| 2003 | Ultimate Wood Outswing French Door DISC LA PRE 2012 | 3/31/2003: Satin Taupe (TP) hardware replaces brass as standard. Standard door now includes hardware (no lock, no bore is an option), Satin Taupe (TP) hardware replaces brass as standard. Strikes for Satin Taupe, Brushed Chrome, Polished Chrome and White are Stainless Steel. |
| 2004 | Ultimate Wood Outswing French Door DISC LA PRE 2012 | 1/2004: Added Oiled Rubbed Bronze and Satin Chrome to available hardware finishes. 4/12/2004: Satin Nickel hardware finish introduced. 6/14/2004: Ultimate and Ultimate Wood Direct Glaze Rectangle redesigned. Polished chrome finish hardware is retired. |
| 2005 | Ultimate Wood Outswing French Door DISC LA PRE 2012 | 1/2005: New options: No lock. bore, bored mortise latch with deadbolt. Locking stiles use LVL core, optional bronze Ultrex sill with black weather strip. Options for Outswing French Door become available on Ultimate Outswing French Door. Outswing French Door now retired. 6/15/2005: Changed jamb leaf on adjustable hinge to closed knuckle design. 6/27/2005: Introduced Brass PVD and Satin Nickel PVD finishes to French door handles, adjustable hinges, and other miscellaneous parts. |
| 2006 | Ultimate Wood Outswing French Door DISC LA PRE 2012 | 7/24/06: Discontinued retro 6-5 height and replaced with 6-6 height. Frame OSM for 6-6 height is 3/4" taller than 6-5 doors. Frame OSM for 6-6 width is 11/16" wider (one panel), 1 3/8" wider (two panel) and 2 1/16" wider (three panel). |
| 2007 | Ultimate Wood Outswing French Door DISC LA PRE 2012 | 2/20/07: Introduced raised and flat panels as a standard option for Marvin French Doors and Commercial Doors. |
| 2008 | Ultimate Wood Outswing French Door DISC LA PRE 2012 | 7/28/2008: Mixed grain Douglas fir is now a standard option. |
| 2009 | Ultimate Wood Outswing French Door DISC LA PRE 2012 | 3/23/2009: Added LoE-3-366" as a standard option for all products. Added Cedro Macho as a standard option for all Ultimate products. |
| 2010 | All Doors | 2/22/2010: Added Dark Bronze hardware finish for doors. |
| 2011 | All Doors | 4/25/2011: Added LoE-180™ as a standard option for all products. White painted interior finish option introduced for all products. |
| 2012 | Ultimate Wood Outswing French Door | 7/30/2012: Stave Core added to our description for current finger joint/edge glue construction of door panels. Redesign incorporating new cladding, frame and sill profile (F2050). Optional exterior sill cover available in Mahogany; Optional interior sill liner available in Oak, Mahogany, or Cherry. 10/29/2012: Interior Square Sticking/Glazing Bead option introduced. 12/17/2012: Introduced Clear Interior Finish option on all products. |

| Produced | Unit Type | Features and Changes |
|----------|------------------------------------|--|
| 2013 | Ultimate Wood Outswing French Door | <p>4/29/2013: Introduced Retro 2 Wide CNs on Full Size Heights. New CNs are 50R68, 50R70, 50R80, 60R68, 60R70, and 60R80. All Retro sizes, current and new, will be designated with an "R" in the CN. Introduced interior stain options. Stain colors are Wheat, Honey, Leather, Hazelnut, Cabernet and Espresso.</p> <p>6/24/2013: Direct Glaze Standardization added upgrades and improvements to direct glaze products in both Ultimate and Ultimate Wood products. Glazing method is silicone and interior tape glazed. Wood bead profile is W11751.</p> <p>12/16/2013: Interior Shades option introduced. Added SN PVD Butt Hinge option.</p> |
| 2014 | Ultimate Wood Outswing French Door | <p>1/06/2014: A new corner key design and weep process was implemented. See Product Bulletin 545 for more details.</p> <p>4/28/2014: Added the Contemporary Panel and Contemporary Handle options.</p> <p>6/23/2014: Added PVD color options for the Contemporary Handle; Oil Rubbed Bronze PVD and Satin Nickel PVD are now available.</p> <p>10/27/2014: Introduced Ogee as the new default interior profiles.</p> |
| 2016 | All | <p>06/27/2016: Introduced Matte Black as a standard hardware color.</p> <p>10/31/2016: Introduced 9-0 CN as a standard height. Obsolescence of the wood species Cedro Macho for all products.</p> |
| 2017 | Ultimate Wood Outswing French Door | 10/30/2017: Discontinued EP colors with exception of Stone White and Bronze. Discontinued Jamb align receiver and jamb align bracket. |
| 2022 | Ultimate Wood Outswing French Door | 06/27/2022: The Ultimate Direct Glaze Polygon/Rectangular 4/4 Frame Option and Ultimate Direct Glaze Door Direct Glaze Rectangle 4/4 Frame Option have been slated for discontinuation status DISC NA (No longer available). See Product Bulletin 828 for more information. |
| 2023 | Ultimate Wood Outswing French Door | 06/26/2023: Updated glazing bead profiles for Direct Glaze Polygons, Round Tops and Direct Glaze Rectangles. See Product Bulletin 887 and 891 for more information. |
| 2024 | Ultimate Wood Outswing French Door | 10/28/2024: Direct Glaze Transoms will now be referred to as Direct Glaze Rectangles. See Product Bulletin 950 for more information. |
| 2025 | Ultimate Wood Outswing French Door | 02/24/2025: All interior shade component parts have been moved to No Longer Available. This parts section will be moved to the Internal only Discontinued Resources in MODL. See Product Bulletin 963 for more information. |

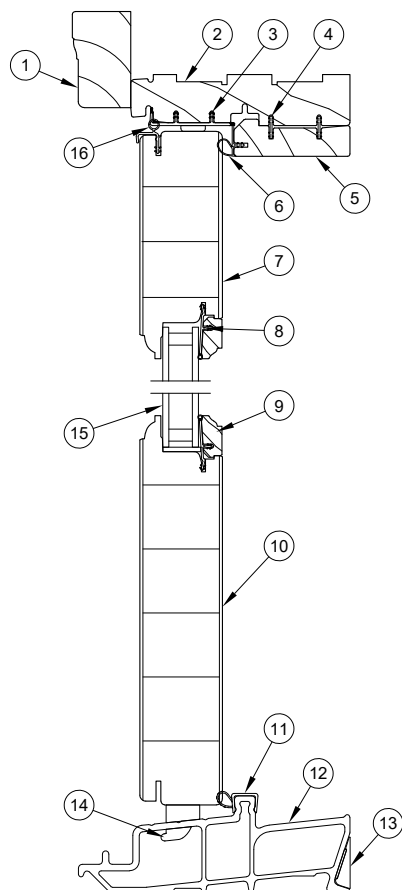


Head Jamb and Sill

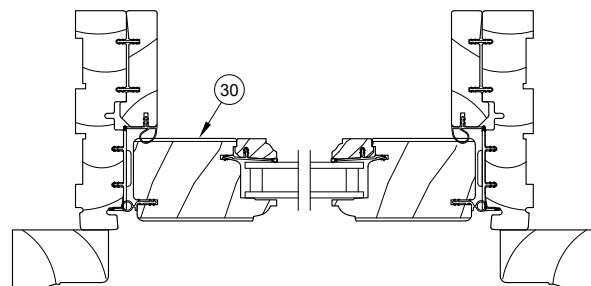
- | | |
|--|---|
| 1. Head Jamb Brick Mould Casing | 17. Jamb |
| 2. Head Jamb | 18. Jamb Connecting Barb. V803 |
| 3. Head Jamb Frame Vinyl , V2114 | 19. Jamb Part Stop, W11409 |
| 4. Head Jamb Stop Connecting Barb | 20. Jamb Part Stop Weather Strip, V796 |
| 5. Head Jamb Part Stop, W11409 | 21. Stile |
| 6. Head Jamb Part Stop Weather Strip, V796 | 22. Inactive Panel Locking Stile |
| 7. Top Rail | 23. Mull Cover Base (Astragal), W10860 |
| 8. Glazing Bead | 24. Mull Cover (Astragal), W10861 |
| 9. Glazing Cap | 25. Astragal Weather Strip, V796 |
| 10. Bottom Rail | 26. Interior Handle Assembly |
| 11. Sill Weather Strip, V2026 | 27. Jamb Frame Vinyl , V2114 |
| 12. Sill Interior Filler Block | 28. Adjustable Hinge |
| 13. Sill, 4 9/16" | 29. Inactive Stile Weather Strip, V1706 |
| 14. Insulating Glass | 30. Stile Weather Strip, V020 |
| 15. Panel Cover Weather Strip, V018 | 31. Active Panel Locking Stile |
| 16. Jamb Brick Mould Casing | 32. Exterior Handle Assembly |



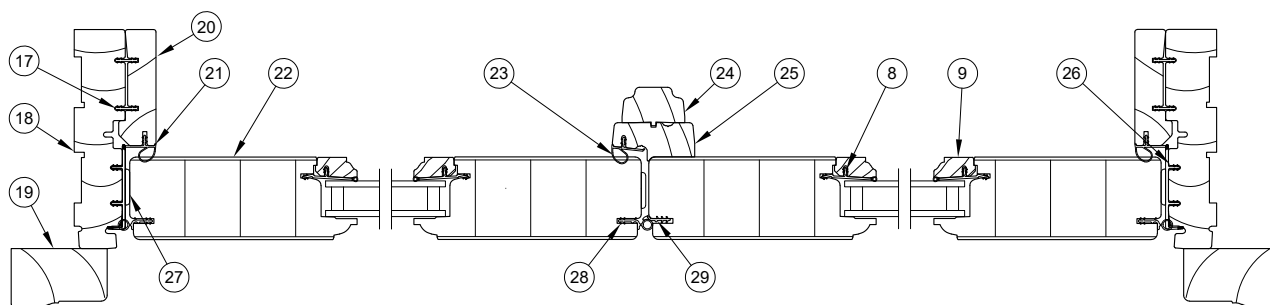
Jamb - XX L



Head Jamb and Sill

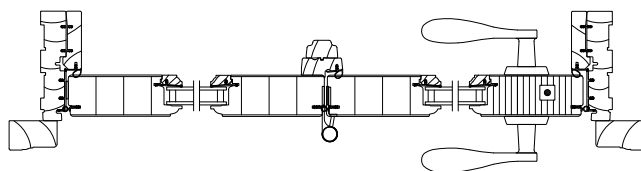


Jamb Sidelite

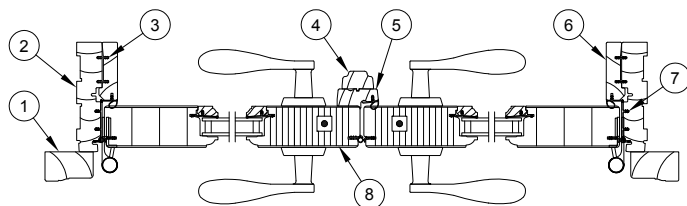


Jamb - OO

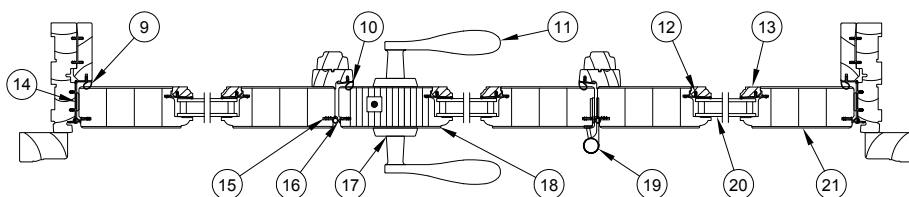
1. Head Jamb Brick Mould Casing
2. Head Jamb
3. Head Jamb Frame Vinyl, V2114
4. Connecting Barb, V803
5. Head Jamb Part Stop, W11409
6. Head Jamb Part Stop Weather Strip, V796
7. Top Rail
8. Glazing Bead
9. Glazing Cap
10. Bottom Rail
11. Sill Weather Strip, V2026
12. Sill, 4 9/16"
13. Sill Interior Filler Block
14. Stationary Panel Sill Bolt
15. Insulating Glass
16. Panel Cover Weather Strip, V018
17. Jamb Connecting Barb, V803
18. Jamb
19. Jamb Brick Mould Casing
20. Jamb Part Stop, W11409
21. Jamb Part Stop Weather Strip, V796
22. Stile
23. Astragal Weather Strip, V796
24. Mull Cover (Astragal), W10861
25. Mull Cover Base (Astragal), W10860
26. Jamb Frame Vinyl, V2114
27. Spacer Tack
28. Stile Weather Strip, V020
29. Inactive Stile Weather Strip, V1706
30. Narrow Sidelite Stile



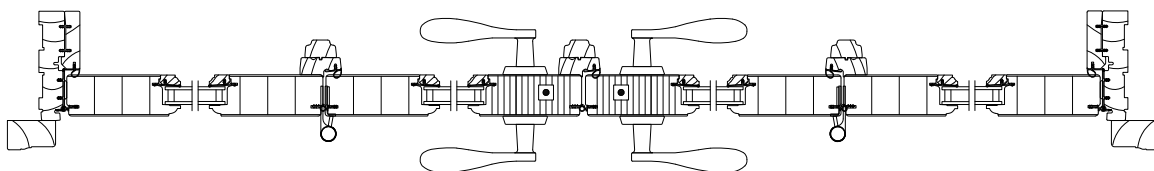
2 Panel Jamb - OX R



2 Panel Jamb - XX L

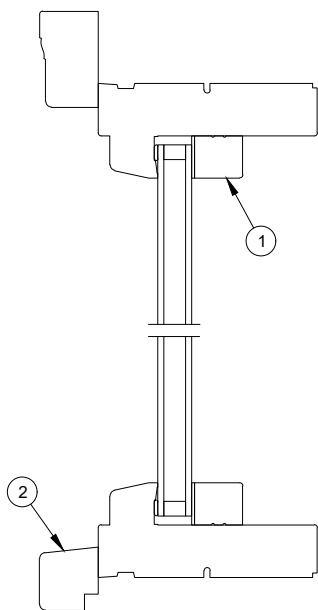


3 Panel Operating Jamb - OXO L

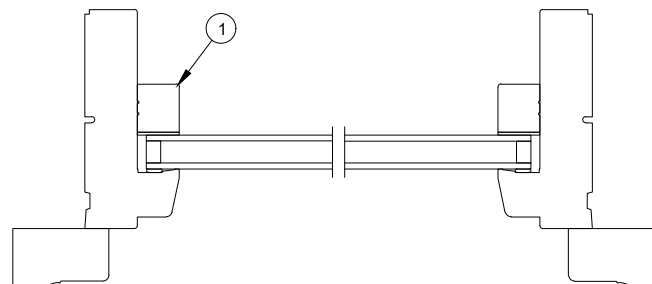


4 Panel Operating Jamb - OXXO L

1. Jamb Brick Mould Casing
2. Jamb
3. Jamb Part Stop Connecting Barb, V803
4. Mull Cover (Astragal), W10861
5. Mull Cover Base (Astragal), W10860
6. Jamb Part Stop, W11409
7. Jamb Frame Vinyl, V2114
8. Inactive Panel Locking Stile
9. Jamb Part Stop Weather Strip, V796
10. Astragal Weather Strip, V796
11. Interior Handle Assembly
12. Glazing Bead
13. Glazing Cap
14. Spacer Tack
15. Inactive Stile Weather Strip, V1706
16. Stile Weather Strip, V020
17. Exterior Handle Assembly
18. Active Panel Locking Stile
19. Adjustable Hinge
20. Insulating Glass
21. Stile



Head Jamb and Sill



Jamb

1. Glazing Bead, W14258 (replaces W11751)
2. Sill Nose

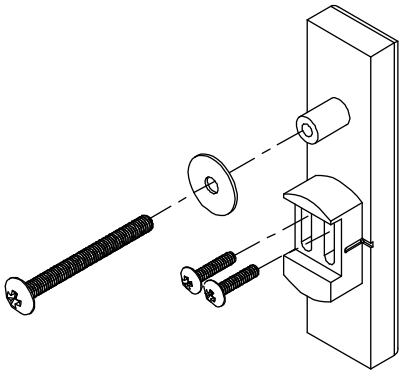
Construction Lock Assembly

For Ultimate residential swinging and sliding doors with standard locks.

Includes:

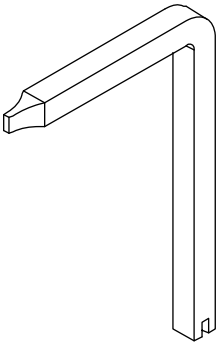
- 1 - Construction Lock Cover
- 1 - Construction Lock Hole Cover
- 1 - Washer
- 2 - #6-32 x 5/6" Phillips TH screws
- 1 - #10-32 x 2" Phillips TH screw

| Qty | PN |
|--------|----------|
| Each | 18450200 |
| 25/Box | 18450198 |



Construction Handle

| PN |
|----------|
| 10830451 |



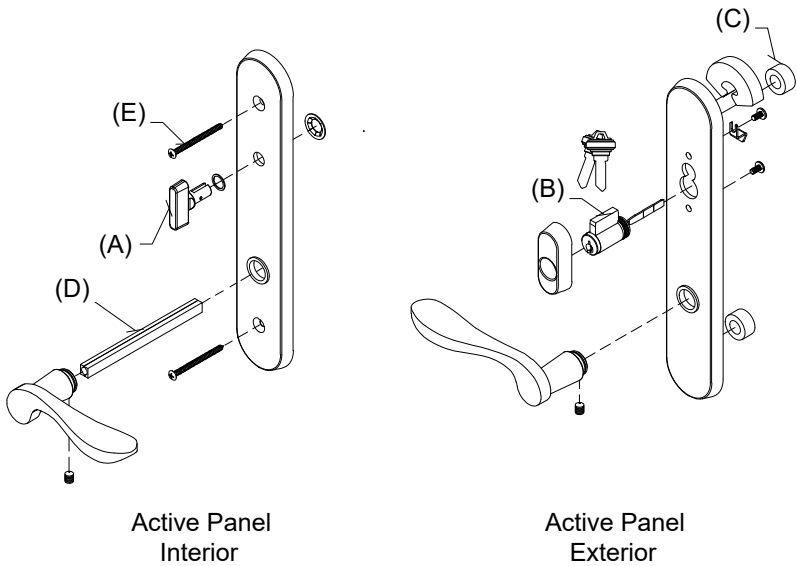
Handle Assembly, Active, Keyed

Mortise Lock and Multi-Point Lock Systems (Schlage “C” Keyway)

Includes:

- 1 - Interior lever with spindle, escutcheon plate and hardware
- 1 - Exterior lever with escutcheon plate and hardware
- 1 - Thumb turn with hardware (A)
- 1 - Keyed cylinder with housing and hardware, includes 2 keys (B)
- 1 - Exterior escutcheon plate gasket
- 2 - Lug Seal (C)
- 1 - Two piece spindle, 4.35” w/1 3/4” panel (D)
- 2 - #10–32 x 2 1/8” Phillips oval head machine screws (w/1 3/4” Panel) (E)

| Handle Assembly - 1 3/4 Panel | |
|-------------------------------|----------|
| Color | PN |
| Satin Taupe | 10830304 |
| Antique Brass | 10830306 |
| White | 10830310 |
| Satin Chrome | 10830302 |
| Oil Rubbed Bronze | 10148111 |
| Oil Rubbed Bronze PVD | 10830300 |
| Brass PVD | 10830324 |
| Satin Nickel PVD | 10830421 |
| Dark Bronze | 10830330 |
| Polished Chrome | 10830308 |
| Matte Black | 10830450 |



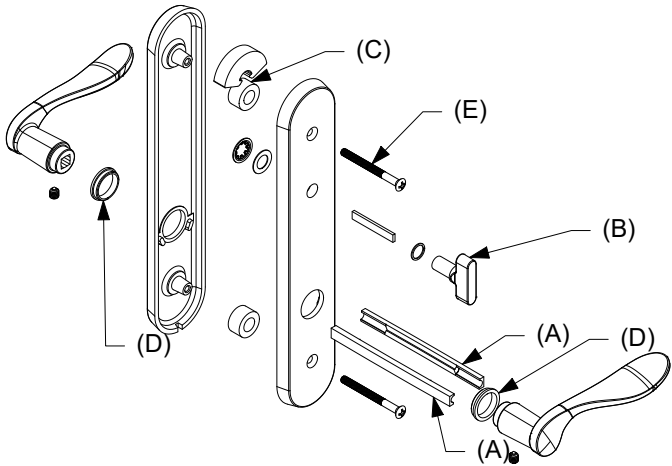
Handle Assembly, Active, Non-Keyed

Mortise Lock and Multi-Point Lock Systems (Schlage “C” Keyway)

Includes:

- 2 - Levers
- 2 - Lever bushings (D)
- 2 - Lug seals (C)
- 1 - Interior escutcheon
- 1 - Exterior escutcheon
- 1 - Thumb turn with actuator/tail piece (B)
- 1 - Two piece spindle, 4.35” w/1 3/4” panel (A)
- 2 - #10–32 x 2 1/8” Phillips oval head machine screws (w/1 3/4” Panel) (E)
- 2 - Set screws
- 1 - Allen wrench
- 1 - Installation instruction

| Handle Assembly - 1 3/4 Panel | |
|-------------------------------|----------|
| Color | PN |
| Satin Taupe | 10830514 |
| Antique Brass | 10830520 |
| White | 10830516 |
| Satin Chrome | 10830513 |
| Oil Rubbed Bronze | 10830512 |
| Oil Rubbed Bronze PVD | 10830510 |
| Brass PVD | 10830517 |
| Satin Nickel PVD | 10830521 |
| Dark Bronze | 10830518 |
| Polished Chrome | 10830515 |
| Matte Black | 10830519 |

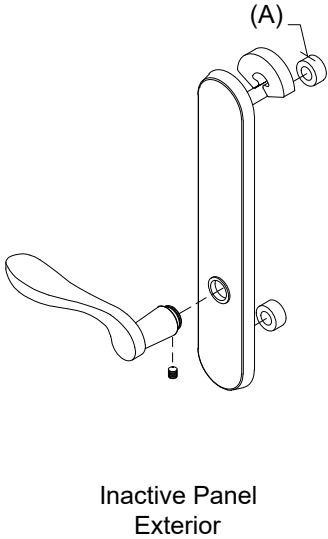
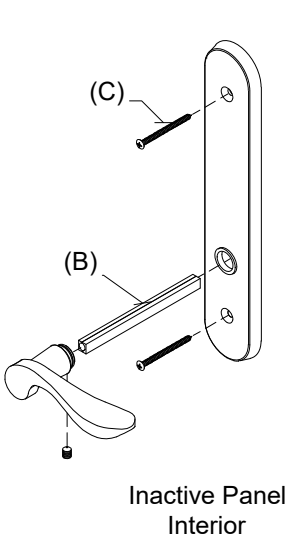


Handle Assembly, Inactive/Dummy

Includes:

- 1 - Interior lever with spindle, escutcheon plate and hardware
- 1 - Exterior lever with escutcheon plate and hardware
- 1 - Exterior escutcheon plate gasket
- 1 - Exterior escutcheon plate
- 2 - Lug seals (A)
- 1 - Two piece spindle, 4.35" (w/1 3/4" panel) (B)
- 2 - #10-32 x 2 1/8" Phillips oval head machine screws (w/1 3/4" Panel) (C)

| Handle Assembly - 1 3/4 Panel | |
|-------------------------------|----------|
| Color | PN |
| Satin Taupe | 10830318 |
| Antique Brass | 10830312 |
| White | 10830316 |
| Satin Chrome | 10830320 |
| Oil Rubbed Bronze | 10148154 |
| Oil Rubbed Bronze PVD | 10830322 |
| Brass PVD | 10830326 |
| Satin Nickel PVD | 10830422 |
| Dark Bronze | 10830328 |
| Polished Chrome | 10830314 |
| Matte Black | 10148157 |



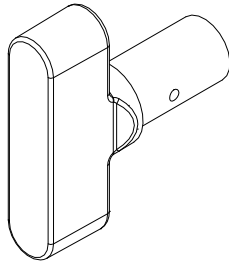
Thumb Turn, Traditional

For Keyed Handle

Includes:

Thumb Turn Washer
Thumb Turn Push Nut

| No Tail Piece/Actuator (for keyed handle) | |
|--|----------|
| Color | PN |
| Antique Brass | 10148483 |
| Satin Chrome | 10148482 |
| Oil Rubbed Bronze | 10148481 |
| Oil Rubbed Bronze PVD | 10148485 |
| Polished Chrome | 10148488 |
| Brass PVD | 10148484 |
| Satin Nickel PVD | 10148487 |
| Satin Taupe | 10148486 |
| Dark Bronze | 10148479 |
| White | 10148489 |
| Matte Black | 10148480 |



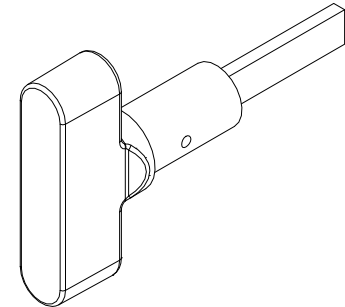
Thumb Turn, Traditional with Actuator/Tail Piece

For Non-Keyed Handle

Includes:

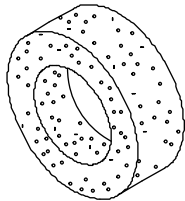
Actuator/Tailpiece
Thumb Turn Washer
Thumb Turn Push Nut

| With Tail Piece/Actuator (for non-keyed handle) | |
|--|----------|
| Color | PN |
| Antique Brass | 10148495 |
| Satin Chrome | 10148494 |
| Oil Rubbed Bronze | 10148493 |
| Oil Rubbed Bronze PVD | 10148497 |
| Polished Chrome | 10148500 |
| Brass PVD | 10148496 |
| Satin Nickel PVD | 10148499 |
| Satin Taupe | 10148498 |
| Dark Bronze | 10148491 |
| White | 10148501 |
| Matte Black | 10148492 |



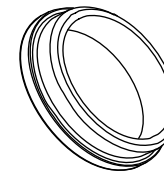
Lug Seal

| PN |
|----------|
| 00142046 |



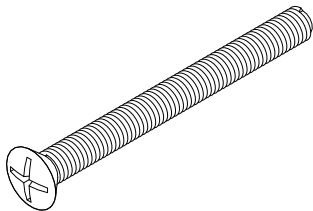
Lever Bushing

| Color | PN |
|---------|----------|
| Clear | 02062201 |
| Gray | 10148448 |
| Gold | 10148447 |
| Natural | 02062202 |
| Black | 10148020 |



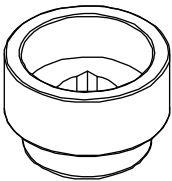
#10–32 x 2 1/8” Phillips Oval Head Machine Screw

| Color | PN |
|-----------------------|----------|
| Satin Taupe | 11800616 |
| Antique Brass | 00143038 |
| White | 00143036 |
| Satin Chrome | 10840031 |
| Oil Rubbed Bronze | 10840032 |
| Oil Rubbed Bronze PVD | 11800160 |
| Brass PVD | 11800615 |
| Satin Nickel PVD | 11800190 |
| Dark Bronze | 11800654 |
| Matte Black | 11800181 |



Handle Extensions

| 3/4” Handle Extension (Requires 3/4” Spindle Extension) | | 3/8” Handle Extension (Requires 3/8” Spindle Extension) | |
|--|----------|--|----------|
| Color | PN | Color | PN |
| Satin Taupe | 10833060 | Satin Taupe | 10833049 |
| Antique Brass | 10833057 | Antique Brass | 10833046 |
| White | 10833063 | White | 10833052 |
| Satin Chrome | 10833056 | Satin Chrome | 10833045 |
| Oil Rubbed Bronze | 10833038 | Oil Rubbed Bronze | 10833044 |
| Oil Rubbed Bronze PVD | 10833059 | Oil Rubbed Bronze PVD | 10833048 |
| Brass PVD | 10833058 | Brass PVD | 10833047 |
| Satin Nickel PVD | 10830139 | Satin Nickel PVD | 10833050 |
| Dark Bronze | 10833054 | Dark Bronze | 10833042 |
| Polished Chrome | 10833062 | Polished Chrome | 10833051 |
| Matte Black | 10833055 | Matte Black | 10833043 |



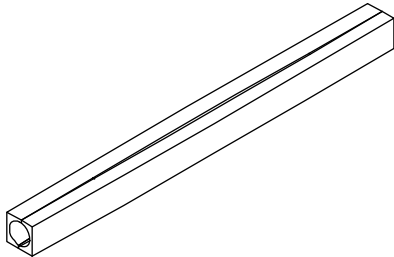
Spindle (Ashland and Truth)

Includes:

- 1 - 2 piece spindle
- 2 - Set screws

NOTE: The 5 1/16” spindle is primarily used for 1 3/4” doors with the 3/4” lever extension.

| Size | PN |
|---------|----------|
| 4 3/8” | 18900392 |
| 5 1/16” | 18900393 |

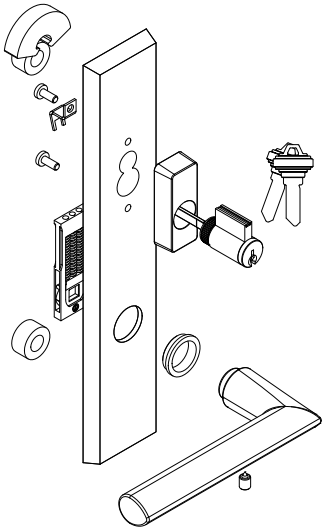


Contemporary Handle, Exterior, Active, Keyed

Includes:

- 1 - Handle
- 1 - Exterior escutcheon with bushing
- 1 - Keyed cylinder, includes 2 keys
- 2 - Lug seals
- 1 - Spring cartridge
- 1 - Set screw
- 1 - Installation instruction
- 1 - Hex wrench

| LH Outswing Panel uses RH PN RH Outswing Panel uses LH PN | | |
|--|----------|----------|
| Color | LH PN | RH PN |
| Matte Black | 11870120 | 11870112 |
| Satin Nickel PVD | 11870122 | 11870114 |
| Oil Rubbed Bronze PVD | 11870124 | 11870116 |
| Dark Bronze | 11870126 | 11870118 |



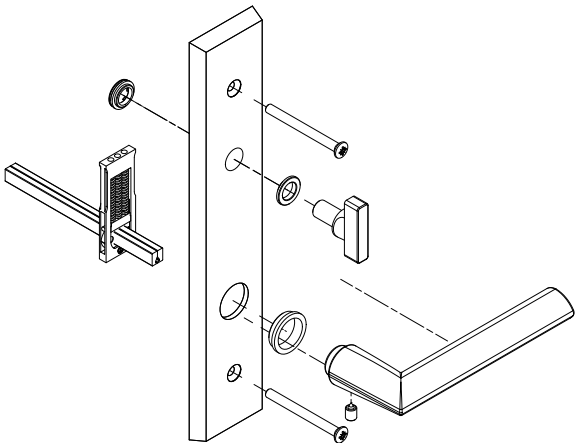
LH shown

Contemporary Handle, Interior, Active, Keyed

Includes:

- 1 - Handle
- 1 - Interior escutcheon with bushings
- 1 - Spring cartridge
- 1 - Thumb turn
- 2 - Machine screws, 2 1/4" Doors
- 2 - Machine screws, 1 3/4" Doors
- 1 - Split spindle, 2 1/4" Doors
- 1 - Split spindle, 1 3/4" Doors
- 1 - Set screw
- 1 - Installation instruction
- 1 - Hex wrench

| LH Outswing Panel uses LH PN RH Outswing Panel uses RH PN | | |
|--|----------|----------|
| Color | LH PN | RH PN |
| Matte Black | 11870104 | 11870097 |
| Satin Nickel PVD | 11870106 | 11870098 |
| Oil Rubbed Bronze PVD | 11870108 | 11870100 |
| Dark Bronze | 11870110 | 11870102 |



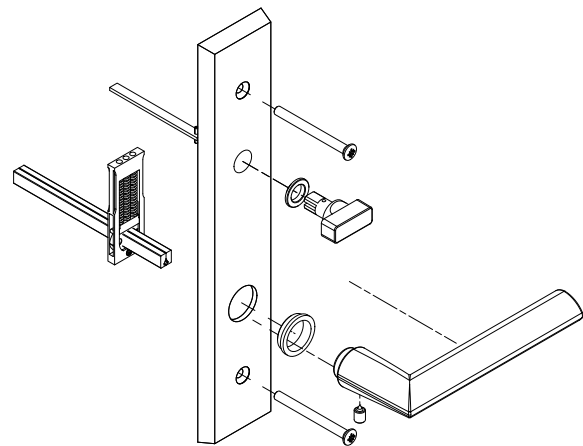
RH shown

Contemporary Handle, Interior, Active, Non-Keyed

Includes:

- 1 - Handle
- 1 - Interior escutcheon with bushings
- 1 - Spring cartridge
- 1 - Thumb turn
- 2 - Machine screws, 2 1/4" Doors
- 2 - Machine screws, 1 3/4" Doors
- 1 - Split spindle, 2 1/4" Doors
- 1 - Split spindle, 1 3/4" Doors
- 1 - Set screw
- 1 - Installation instruction
- 1 - Hex wrench

| LH Outswing Panel uses LH PN RH Outswing Panel uses RH PN | | |
|--|----------|----------|
| Color | LH PN | RH PN |
| Matte Black | 11870136 | 11870128 |
| Satin Nickel PVD | 11870138 | 11870130 |
| Oil Rubbed Bronze PVD | 11870139 | 11870132 |
| Dark Bronze | 11870143 | 11870133 |



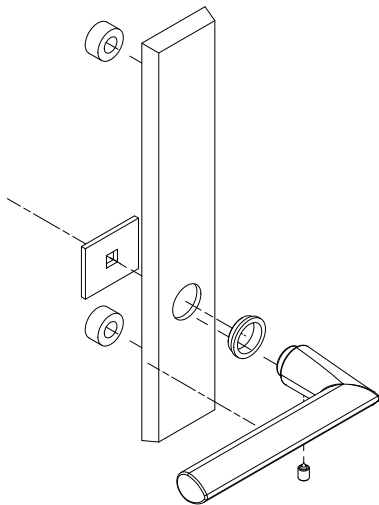
RH shown

Contemporary Handle, Exterior, Non-Keyed, Inactive/Dummy

Includes:

- 1 - Handle
- 1 - Exterior escutcheon with bushings
- 2 - Lug seals
- 1 - Fixing plate
- 1 - Set screw
- 1 - Installation instruction
- 1 - Hex wrench

| LH Outswing Panel uses RH PN RH Outswing Panel uses LH PN | | |
|--|----------|----------|
| Color | LH PN | RH PN |
| Matte Black | 11870153 | 11870145 |
| Satin Nickel PVD | 11870154 | 11870146 |
| Oil Rubbed Bronze PVD | 11870156 | 11870148 |
| Dark Bronze | 11870158 | 11870149 |



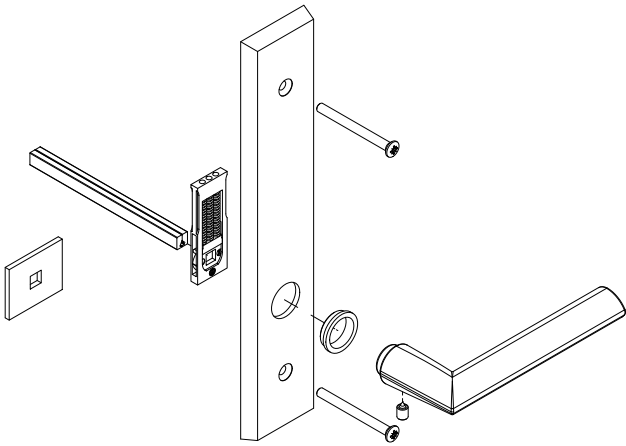
LH shown

Contemporary Handle, Interior, Inactive/Dummy

Includes:

- 1 - Handle
- 1 - Escutcheon with bushing
- 1 - Dummy fixing plate
- 1 - Spring cartridge
- 2 - Machine screws, 2 1/4" Doors
- 2 - Machine screws, 1 3/4" Doors
- 1 - Split spindle, 2 1/4" Doors
- 1 - Split spindle, 1 3/4" Doors
- 1 - Set screw
- 1 - Installation instruction
- 1 - Hex wrench

| LH Outswing Panel uses LH PN RH Outswing Panel uses RH PN | | |
|--|----------|----------|
| Color | LH PN | RH PN |
| Matte Black | 11870169 | 11870160 |
| Satin Nickel PVD | 11870171 | 11870162 |
| Oil Rubbed Bronze PVD | 11870172 | 11870164 |
| Dark Bronze | 11870174 | 11870166 |



RH shown

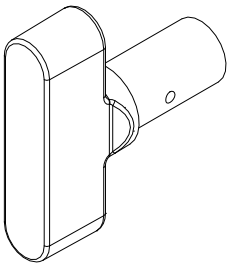
Thumb Turn, Contemporary

For Keyed Handle

Includes:

- Thumb Turn Washer
- Thumb Turn Push Nut

| No Tail Piece/Actuator (for keyed handle) | |
|--|----------|
| Color | PN |
| Oil Rubbed Bronze PVD | 10148485 |
| Satin Nickel PVD | 10148487 |
| Dark Bronze | 10148479 |
| Matte Black | 10148480 |



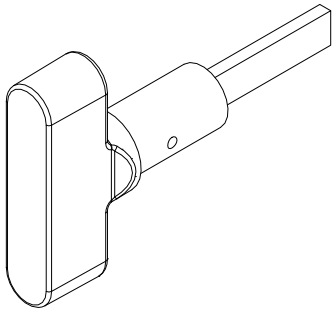
Thumb Turn, Contemporary with Actuator/Tail Piece

For Non-Keyed Handle

Includes:

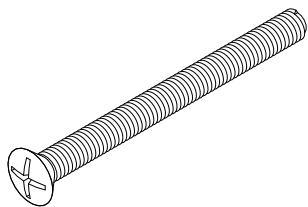
- Actuator/Tailpiece
- Thumb Turn Washer
- Thumb Turn Push Nut

| With Tail Piece/Actuator (for non-keyed handle) | |
|--|----------|
| Color | PN |
| Oil Rubbed Bronze PVD | 10148497 |
| Satin Nickel PVD | 10148499 |
| Dark Bronze | 10148491 |
| Matte Black | 10148492 |



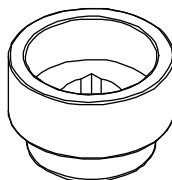
M5 x 55mm Oval Head Machine Screw

| Color | PN |
|-----------------------|----------|
| Satin Taupe | 10148400 |
| Oil Rubbed Bronze PVD | 10148402 |
| Satin Nickel PVD | 10148403 |
| Dark Bronze | 10148404 |
| Matte Black | 10148440 |



Handle Extension

| 3/4" Handle Extension (Requires 3/4" Spindle Extension) | |
|--|----------|
| Color | PN |
| Satin Taupe | 10148419 |
| Oil Rubbed Bronze PVD | 10148421 |
| Satin Nickel PVD | 10148422 |
| Dark Bronze | 10148420 |
| Matte Black | 10148445 |

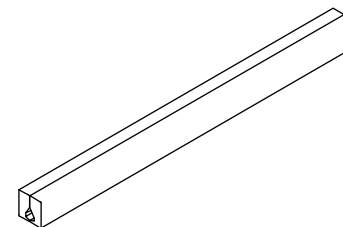


Spindle (Hoppe)

Includes:

- 1 - 2 piece spindle
- 2 - Set screws

| Size | PN |
|--------|----------|
| 4 3/4" | 10148414 |
| 5 1/2" | 10148415 |



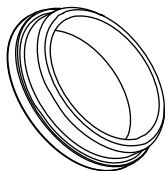
Spring Cartridge

| PN |
|----------|
| 10830452 |



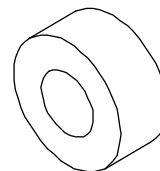
Lever Bushing, Contemporary

| Color | PN |
|---------|----------|
| Gray | 10148448 |
| Natural | 02062202 |
| Black | 10148020 |



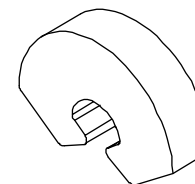
Gasket Post, Lug Seal

| PN |
|----------|
| 10148404 |



Gasket, Top Backplate

| PN |
|----------|
| 10148405 |



Keyed Cylinder, Lock

(Schlage “C” Keyway)
For service replacement only.

Includes:

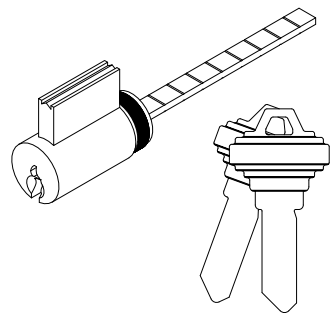
2 - Keys

NOTE: For Keyed Alike orders, use program C87P2

Polished Chrome, White, Satin Nickel PVD, Matte Black use Chrome Face

Satin Taupe, Antique Brass, Satin Chrome, Oil Rubbed Bronze, Oil Rubbed Bronze PVD, Brass PVD, Dark Bronze use Brass Face

| Color | PN |
|-------------|----------|
| Brass Face | 10830211 |
| Chrome Face | 10830208 |



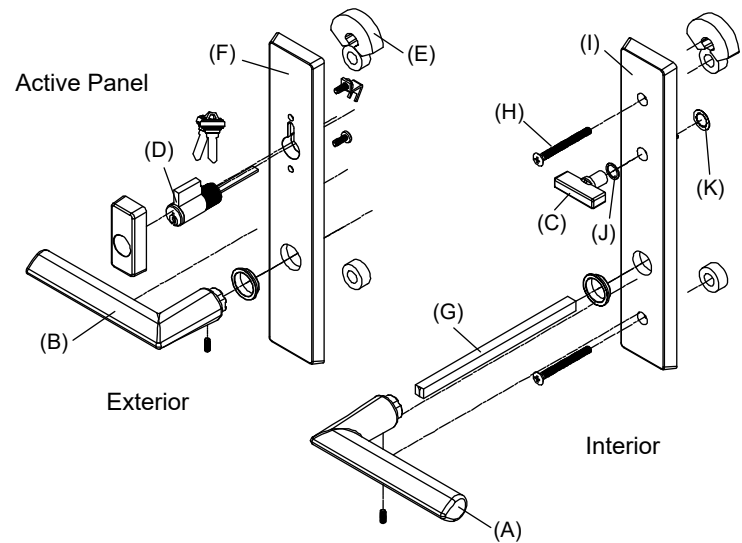
Contemporary Handle Assembly, Active Panel

Mortise Lock and Multi-Point Lock Systems (Schlage “C” Keyway)

Includes:

- 1 - Interior lever with spindle, escutcheon plate and hardware (A)
- 1 - Exterior lever with escutcheon plate and hardware (B)
- 1 - Thumb turn with hardware (C)
- 1 - Keyed cylinder with housing and hardware, includes 2 keys (D)
- 1 - Exterior escutcheon plate gasket (E)
- 1 - Exterior escutcheon plate (F)
- 1 - Two piece spindle (G)
- 2 - M5 x 55mm Phillips oval head machine screws (H)
- 1 - Interior escutcheon plate (I)
- 1 - Thumb turn washer (J)
- 1 - Thumb turn push nut (K)

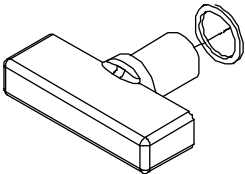
| Color | PN |
|-------------|----------|
| Satin Taupe | 11102150 |



Thumb Turn (C)

NOTE: For each thumb turn, order one thumb turn washer (J) 10148423 and one thumb turn push nut (K) 10148424.

| Color | PN |
|-------------|----------|
| Satin Taupe | 10148425 |

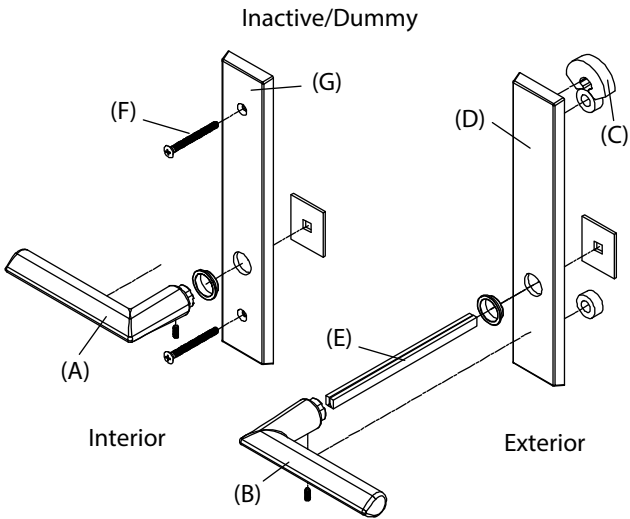


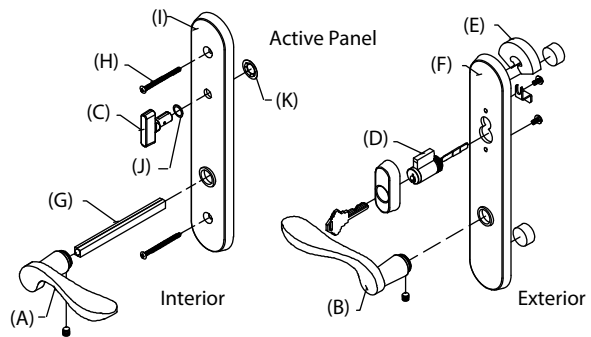
Contemporary Handle Assembly, Inactive/Dummy

Includes:

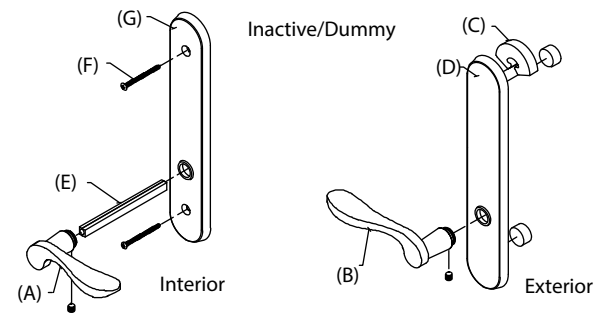
- 1 - Interior lever (A) with spindle, escutcheon plate and hardware
- 1 - Exterior lever (B) with escutcheon plate and hardware
- 1 - Exterior escutcheon plate gasket (C)
- 1 - Exterior escutcheon plate (D)
- 1 - Two piece spindle (E)
- 2 - M5 x 55mm Phillips oval head machine screws (F)
- 1 - Interior escutcheon plate (G)

| Color | PN |
|-------------|----------|
| Satin Taupe | 11102153 |



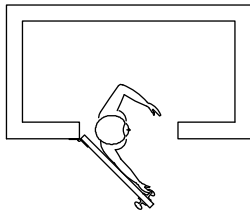


Handle Assembly, Active Panel
Brushed Chrome is no longer available.

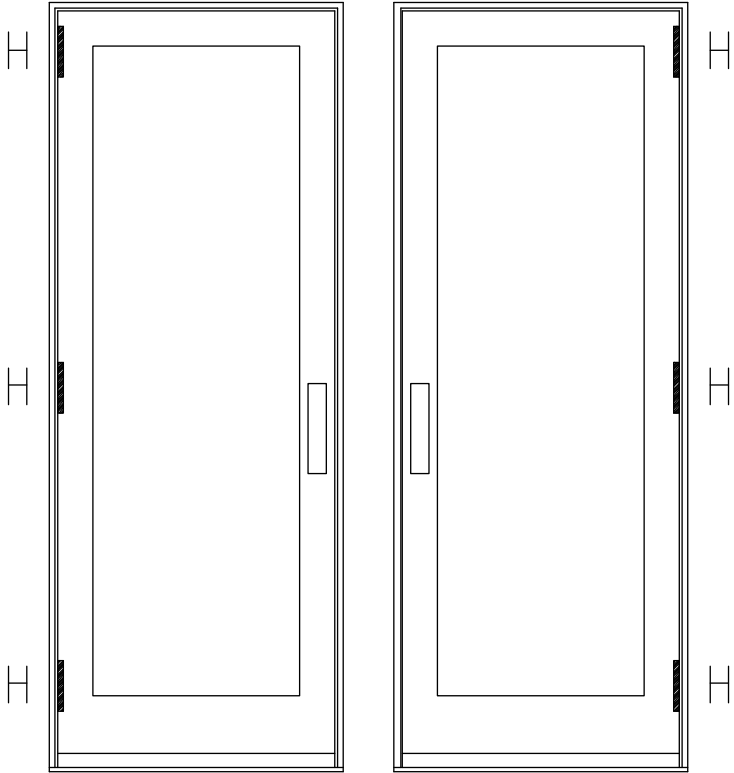


Handle Assembly, Inactive/Dummy
Brushed Chrome is no longer available.

NOTE: Always view units from the exterior for handing.
H=Hinge location

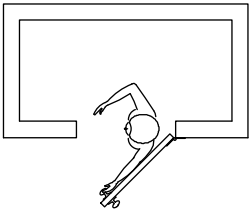


RH Outswing



X-RH Outswing
 This panel uses the right hand hinge

X-LH Outswing
 This panel uses the left hand hinge



LH Outswing

Hinge Kit, Adjustable

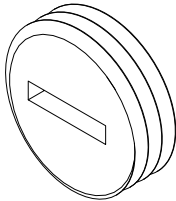
Includes:

- 1 - Adjustable hinge
- 1 - #10 x 2 1/2" Phillips flat head wood screws (jamb)
- 5 - #10 x 3/4" Phillips flat head wood screws (jamb, stationary stile)
- 4 - #8 x 1 1/2" Phillips flat head wood screws (panel)

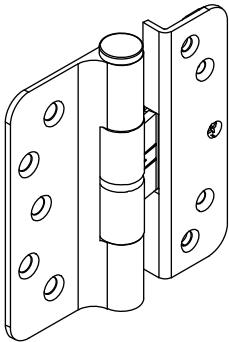
NOTE: Hinge part number includes the color matched screws, If you need to order the screws separately, they are listed below.

Adjustment Cover, Adjustable Hinge

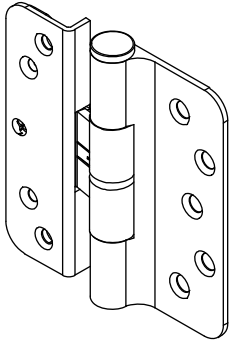
| PN |
|----------|
| 11844039 |



| Adjustable Hinge Package - Color and Part Number | | | Matching Screw Color |
|--|----------|----------|----------------------|
| Hinge Color | LH PN | RH PN | |
| Satin Taupe (TP) | 02101216 | 02101227 | TP |
| Goldtone (GT) | 02101213 | 02101224 | GT |
| Silver Frost (SF) | 02101218 | 02101229 | Stainless Steel |
| Dark Bronze (DKBZ) | 02101217 | 02101228 | DKBZ |
| Antique Brass (AB) | 02101210 | 02101221 | DKBZ |
| White (WH) | 02101214 | 02101225 | WH |
| Satin Chrome (SC) | 02101212 | 02101223 | Stainless Steel |
| Oil Rubbed Bronze (ORBZ) | 02101219 | 02101230 | DKBZ |
| Oil Rubbed Bronze PVD (ORBZ) | 02101211 | 02101222 | DKBZ |
| Brass PVD (BS) | 02101215 | 02101226 | BS PVD |
| Satin Nickel (SN) PVD | 02101220 | 02101231 | Stainless Steel |
| Polished Chrome (PC) | 02101234 | 02101235 | Stainless Steel |
| Matte Black (MBK) | 02101236 | 02101237 | MBK |



LH Hinge



RH Hinge

| Individual Screw Description | Color and Part Number | | | | | | | |
|--|-----------------------|----------|----------|----------|----------|-----------------|----------|----------|
| | TP | GT | WH | DKBZ | BS PVD | Stainless Steel | Chrome | MBK |
| #8 x 1 1/2" Phillips flat head wood screws (panel). 4 - per hinge. | 11865177 | 11865172 | 11865173 | 02058013 | 11865176 | 11865175 | | 11865178 |
| #10 x 3/4" Phillips flat head wood screws (jamb) (stationary stile). 5 -per hinge. | 11800674 | 11800670 | 11800671 | 11800669 | 11800673 | | 11800672 | 11800677 |
| #10 x 2 1/2" Phillips flat head wood screws (jamb). 1 - per hinge. | | | | | | | | |
| NOTE: Part numbers for these screws are sold in packages of 4 screws and includes 1 - 5/32" Allen wrench. (Long Hinge Screw Package) | 11800653 | 11800632 | 11800637 | 11800644 | 10148185 | 11800639 | | 11800696 |

4” Butt Hinge

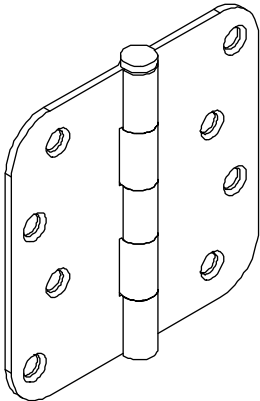
NRP=Non Removable Pin

Includes:

- 1 - 4” Hinge
- 7 - #9 x 1” Phillips flat head wood screws
- 1 - #10 x 2 1/2” Phillips flat head wood screw (frame)

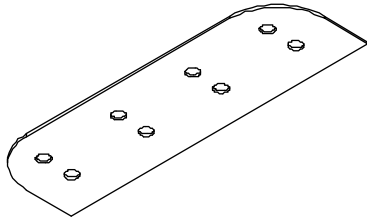
| Hinge Color | PN |
|------------------|----------|
| Brass | 02101140 |
| Satin Nickel PVD | 02100599 |
| Stainless Steel | 11809005 |

| Screw Color - b | PN |
|---------------------|----------|
| #9 x 1” BS | 11213824 |
| #10 x 2 1/2” BS PVD | 11800679 |



4” Butt Hinge Shim

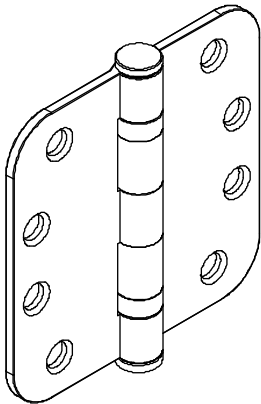
| PN |
|----------|
| 10500222 |



Ball Bearing Hinge

4” x 4”

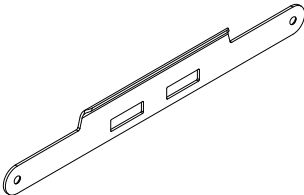
| Color | PN |
|--------------|----------|
| Brass | 02100470 |
| Satin Chrome | 02100471 |
| Bronze | 02100472 |



Strike Plate, Panel Mortise Lock or Multi-Point Lock

- Includes:**
- 1 - Panel strike plate
 - 2 - #8 x 1" Brass Phillips flat head wood screws*

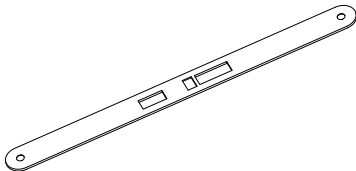
| Color | PN |
|-----------------------|----------|
| Stainless Steel | 05700049 |
| Antique Brass | 05700044 |
| Oil Rubbed Bronze PVD | 05700117 |
| Brass PVD | 10148176 |



Cover Plate Active Mortise Lock or Multi-Point Lock

- Includes:**
- 1 - Cover plate
 - 2 - #8 x 1" Brass Phillips flat head wood screws*

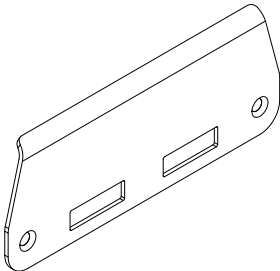
| Color | PN |
|-----------------------|----------|
| Stainless Steel | 05700306 |
| Antique Brass | 05700307 |
| Oil Rubbed Bronze PVD | 05700308 |
| Brass PVD | 10148179 |



Strike Plate, Jamb Mortise Lock or Multi-Point Lock

- Includes:**
- 1 - Jamb strike plate
 - 2 - #8 x 1" Brass Phillips flat head wood screws*

| Color | PN |
|-----------------------|----------|
| Stainless Steel | 05700016 |
| Antique Brass | 05700012 |
| Oil Rubbed Bronze PVD | 05700118 |
| Brass PVD | 10148175 |



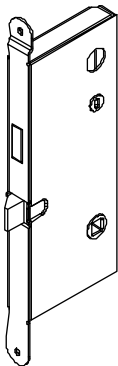
***Stainless Steel - 11800645**
Dark Bronze - 11800652
Brass PVD - 11800536

Note: Dark Bronze screws are used with
 Antique Brass and Oil Rubbed Bronze PVD

Mortise Lock, Active Single Point

(Latch and dead bolt only)

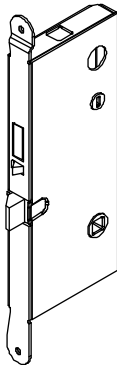
| PN |
|----------|
| 05700129 |



Mortise Lock, Active Multi-Point Lock

(Latch, dead bolt and head/foot shoot bolts)

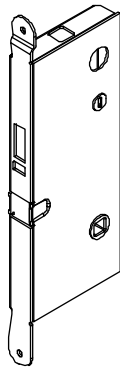
| PN |
|----------|
| 05700130 |



Mortise Lock, Inactive Panel Multi-Point Lock

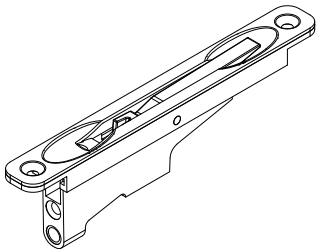
(Head/foot shoot bolts)

| PN |
|----------|
| 05700131 |



Head or Foot Flush Bolt Inactive Panel

| Color | PN |
|-------|----------|
| Black | 11101780 |

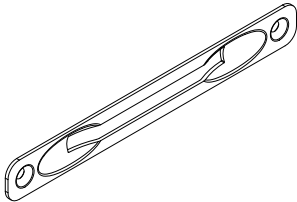


Cover Plate for Flush Bolt

Includes:

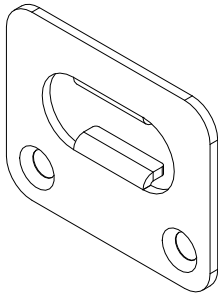
- 1 - Cover plate
- 2 - #8 x 1" screws

| Color | PN |
|----------|----------|
| Aluminum | 11860402 |



Sill Strike

| Color | PN |
|-----------------|----------|
| Stainless Steel | 10148080 |



Locking Rod Assembly, Top for Multi-Point

Solid stainless steel rod with 1/4" - 20 threads

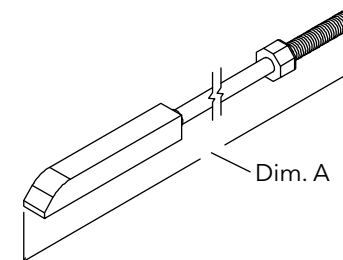
Product usage:

3/02 to present (Amerock) 8/0 height see history

5/10/90 to present (Amerock) 6/5, 6/8, & 7/0 height

NOTE: For special height give dimension A

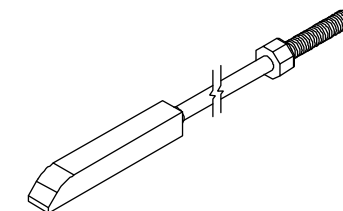
| Height | Top Locking Rod Length | Color | PN |
|------------|------------------------|-----------------|----------|
| CN 6/6R ht | 35 7/16" | Stainless Steel | 05700174 |
| CN 6/8 ht | 37 15/16" | | 05700176 |
| CN 7/0 ht | 41 15/16" | | 05700177 |
| CN 8/0 ht | 51 7/16" | | 05700179 |
| CN 9/0 ht | 63 7/16" | | 05700191 |



Locking Rod Assembly, Bottom for Multi-Point Lock

Solid stainless steel rod with 1/4" - 20 threads

| Height | Btm Locking Rod Length | Color | PN |
|------------|------------------------|-----------------|----------|
| CN 6/6R ht | 34 9/32" | Stainless Steel | 05700170 |
| CN 6/8 ht | | | |
| CN 7/0 ht | | | |
| CN 8/0 ht | | | |
| CN 9/0 ht | | | |

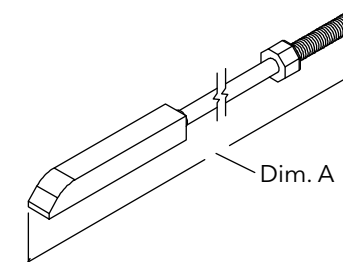


Inactive Panel Locking Rod Assembly, Top or Bottom Flush Bolt

Includes:

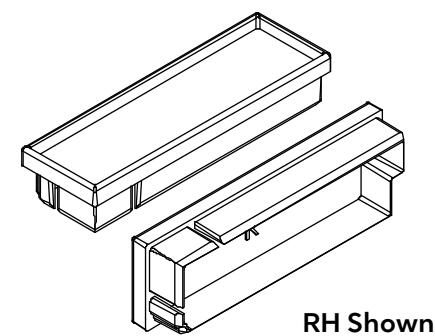
1 - Locking rod with end bolt

| Height | Top Locking Rod Length | Color | PN |
|-------------|------------------------|-----------------|----------|
| CN 6/6R ht | 11" | Stainless Steel | 05700180 |
| CN 6/8 ht | 11" | | 05700180 |
| CN 7/0 ht | 11" | | 05700180 |
| CN 8/0 ht | 27" | | 05700185 |
| CN 9/0 ht | 34 9/32" | | 05700170 |
| Height | Btm Locking Rod Length | | PN |
| All heights | 11" | | 10815178 |



End Plug, Flat Casing

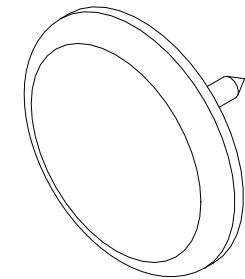
| Color | Handing | PN |
|--------|---------|----------|
| Beige | LH | 11869852 |
| | RH | 11869850 |
| Bronze | LH | 11869853 |
| | RH | 11869851 |



Jamb Spacer Tack, Stationary Panel

3/4" Diameter Head (replaced 7/16" diameter head)

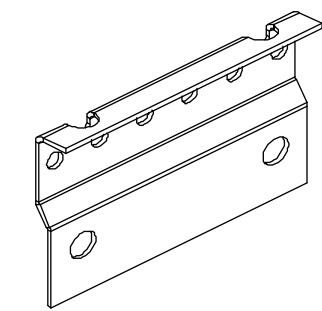
| PN |
|----------|
| 11860423 |



Stationary Panel Bracket

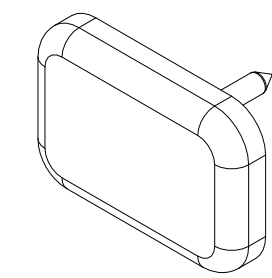
Field Service only

| PN |
|----------|
| 11860216 |



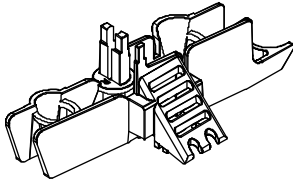
Head Jamb Spacer Tack; Stationary Panel

| PN |
|----------|
| 11860424 |



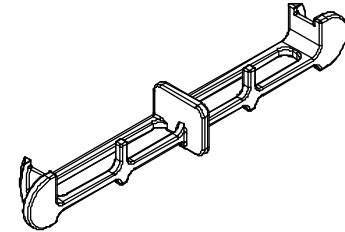
Sill End Plug, Pre 2014

| Handing | Color | PN |
|---------|-------|----------|
| LH | Black | 11869836 |
| RH | | 11869837 |



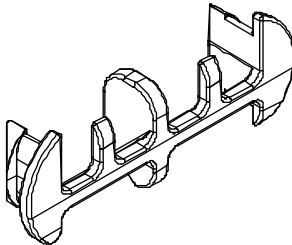
Sill Drain Cover, Pre 2014

| Color | PN |
|--------|----------|
| Beige | 15633101 |
| Bronze | 15633102 |



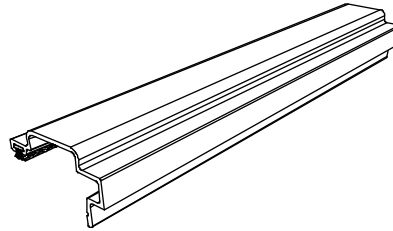
Sill Outlet Drain Cover, Pre 2014

| Color | PN |
|-------|----------|
| Black | 15633100 |



When ordering replacement parts, specify:

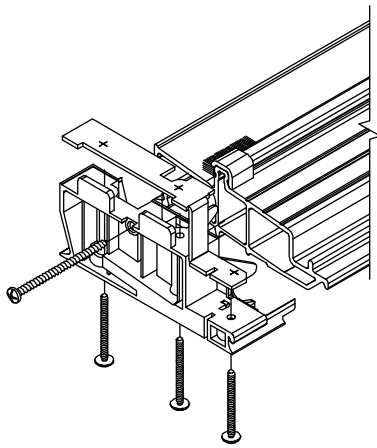
1. Profile number;
2. size (call number or rough opening);
3. length;
4. handing;
5. finish.



Active Astragal, A732

When ordering replacement parts, specify:

1. Profile number;
2. call number or rough opening;
3. length
4. LH or RH operation;
5. type of product
6. finish.



2014 Ultrex Sill, 4 9/16", F2050

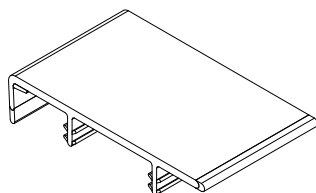
Beige or Bronze

Frame Vinyl, Head and Side Jamb

V2114

| Head Jamb | | |
|------------|----------|----------|
| Length | Beige PN | Black PN |
| 17 11/16" | 11208016 | NA |
| 29 5/16" | 11208026 | 11208226 |
| 31 5/16" | 11208028 | 11208228 |
| 35 5/16" | 11208030 | 11208230 |
| 46 1/2" | 11208040 | 11208240 |
| 56 7/8" | 11208051 | NA |
| 58 1/2" | 11208050 | 11208250 |
| 62 1/2" | 11208054 | 11208254 |
| 68 7/8" | 11208061 | NA |
| 70 1/2" | 11208060 | 11208260 |
| 82 1/2" | 11208070 | 11208270 |
| 93 11/16" | 11208080 | NA |
| 105 11/16" | 11208090 | 11208290 |
| 116 7/8" | 11208010 | NA |
| 124 7/8" | 11208011 | 11208211 |
| 140 7/8" | 11208012 | 11208212 |
| 164 7/8" | 11208099 | 11208299 |

| Side Jamb - 1/6/2014 to present | | |
|---------------------------------|----------|----------|
| Length | Beige PN | Black PN |
| 77 19/32" | 11209466 | 11209566 |
| 79 3/32" | 11209468 | 11209568 |
| 83 3/32" | 11209470 | 11209570 |
| 92 19/32" | 11209480 | 11209580 |
| 104 19/32" | 11209490 | 11209590 |



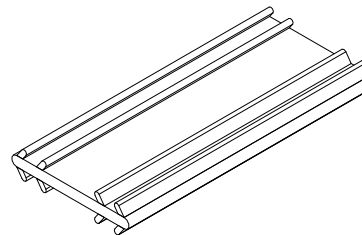
Straight end cuts

Connecting Barb

V803

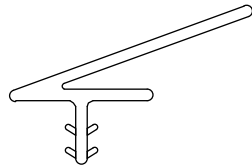
NOTE: Color may vary depending on current stock.

| Length | PN |
|----------------|----------|
| Specify Length | 15812999 |

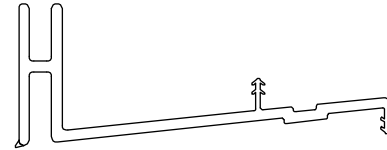


When ordering replacement parts, specify:

1. Profile number;
2. call number or rough opening;
3. length
4. LH or RH operation;
5. type of product
6. finish.

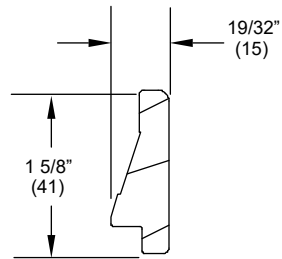


Sash Retainer (Transom), V026
Black



Sill Leveling Block (Transom), V2109
Beige or Black

Available in Configured Parts in OMS

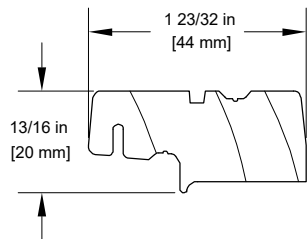


W10935, Sill Liner

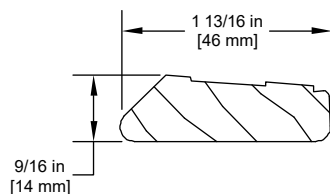
Oak standard
Cherry or Mahogany optional

When ordering replacement parts, specify:

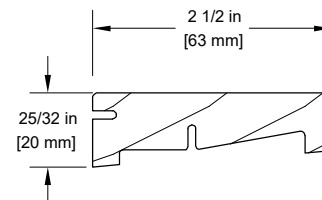
1. Profile number;
2. rough opening;
3. handing;
4. length
5. finish.



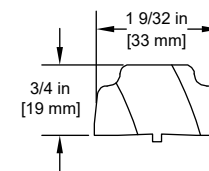
W10860
Mulling Cover Base (Astragal)



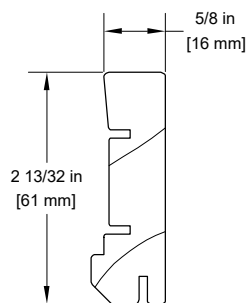
W10919, Sill Cover
Oak standard
Cherry or Mahogany optional



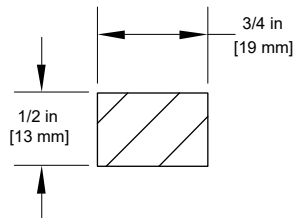
W11398, Sill Cover, Transom



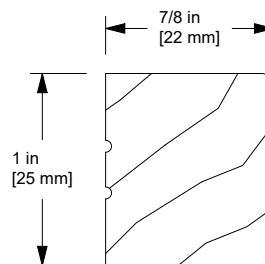
W10861
Mull Casing Cover



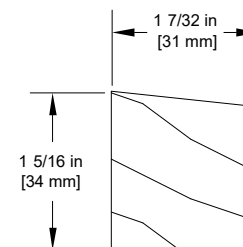
W11409
Jamb Stop



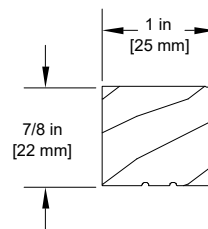
W11533
Top Rail Block



W14258, Glazing Bead, IG
Direct Glaze Rectangle
(Replaces W11751)



W12059, Sill Nosing
Direct Glaze Rectangle

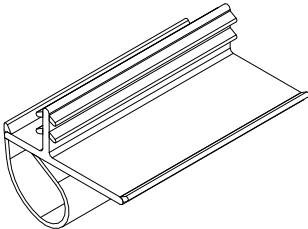


Interior Glazing Bead W11751
Direct Glaze Rectangle
 June 24, 2013 to June 26, 2023
 (replace with W14258)

Offset Bulb Weather Strip, Mull Casing, Transom and Astragal

V796

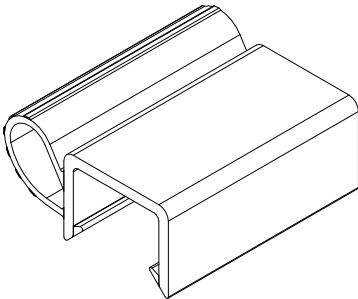
| Length | Color | PN |
|------------|-------|----------|
| 75 43/64" | Beige | 15170866 |
| | Black | 15170867 |
| 104 7/8" | Beige | 15170090 |
| | Black | 15170091 |
| 115 41/64" | Beige | 15170810 |
| | Black | 15170811 |
| 189 23/32" | Beige | 15173298 |
| | Black | 15173398 |



Weather Strip, Sill

V2026

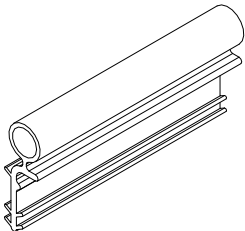
| Length | Beige PN | Black PN |
|------------|----------|----------|
| 47 1/8" | 11208440 | 11208540 |
| 62 5/16" | 11208454 | 11208554 |
| 82 5/16" | 11208470 | 11208570 |
| 105 1/2" | 11208490 | 11208590 |
| 164 11/16" | 11208499 | 11208599 |



Weather Strip, Stile

V020

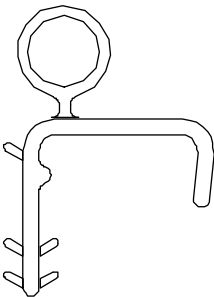
| Length | Beige PN | Black PN |
|--------|----------|----------|
| CN 6/8 | 11197968 | NA |
| CN 8/0 | 11197982 | NA |
| CN 9/0 | 11197990 | 11197991 |
| Lineal | 11197999 | 11197998 |



Weather Strip, Panel Cover

V018

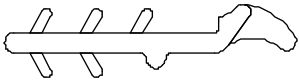
| Length | Beige PN | Black PN |
|--------|----------|----------|
| 150" | 11198799 | 11198999 |



Weather Strip, Inactive

V1706

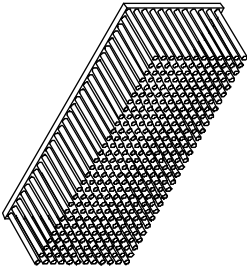
| Length | Beige PN | Black PN |
|--------|----------|----------|
| 121" | 15618199 | 15618299 |



Dust Block, Part Stop

1 3/8" x 3/8" x 1/2"

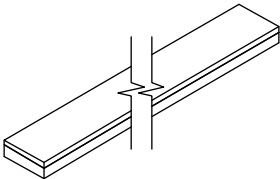
| Color | PN |
|-------|----------|
| Gray | 15600010 |
| Beige | 15600011 |



Butyl Foam Tape 3/16" Width

Adhesive backed

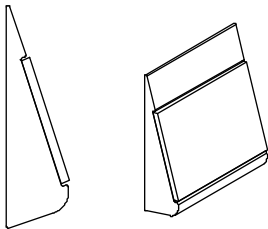
| Length | Color | PN |
|------------|-------|----------|
| 25 FT Roll | Black | 11406232 |



Sill Interior Filler Block

V2077

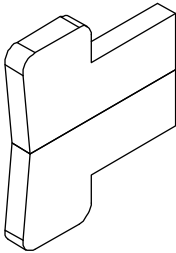
| Color | PN |
|--------|----------|
| Beige | 11124202 |
| Bronze | 11124203 |



Corner Gasket, Pre 2014

Adhesive backed

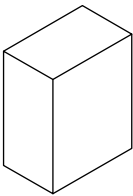
| Color | PN |
|-------|----------|
| Black | 10500434 |



Gasket, Jamb Weather Strip 3/4” - Header, Pre 2014

Adhesive backed

| Color | PN |
|-------|----------|
| Black | 10500576 |



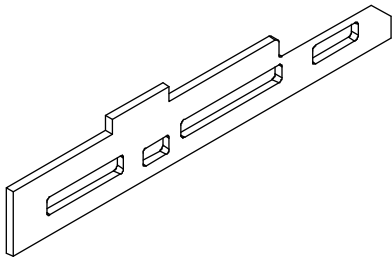
Gasket, Sill to Jamb - 4 9/16”, Pre 2014

Adhesive backed

Includes:

- 1 - LH
- 1 - RH

| Color | PN |
|-------|----------|
| Gray | 15600020 |



When ordering replacement panels, specify:

NOTE: Weather strip is included with all panels (where applicable).

1. OM of panel (NOTE: OM of panel does not include astragal, mull casing);
2. Active, Inactive or Stationary;
 - a. Active - specify no lock (no bore), bore for passage latch/dead bolt, single-point mortise lock or multi-point lock.
 - b. Inactive - specify head or foot bolts or multi-point lock. For Inactive panels with head bolts, if panel being replaced was manufactured before 8/28/2016 and the panel height is greater than 95" order appropriate Inactive Panel Top Flush Bolt Assembly.
 - c. Stationary - specify configuration and/or mull casing (if applicable).
 - d. Panel style
3. Handing;
4. Glazing;
5. Finish;
6. Glazing bead profile
 - a. bevel
 - b. square.
 - Active panels include panel drip, bored for passage/dead bolt, single-point mortise lock, or multi-point lock system.
 - Inactive panels include panel drip, astragal, configured for head and foot bolts or multi-point lock system.
 - Stationary 1 wide panels include panel sweep.
 - Stationary 2,3, or 4 wide panels include panel sweep, sill bolts and mull casing.

