

## Replacement Parts

Specifications and technical data are subject to change without notice.

Numbers listed in ( ) parentheses are metric equivalents in millimeters rounded to the nearest whole number.

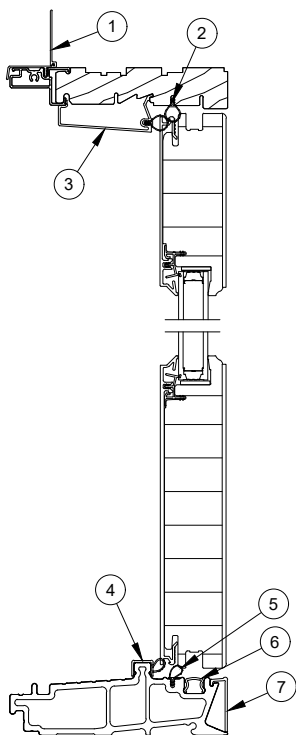
Suggested fasteners are not included and must be ordered separately.

Illustrations are not to scale.

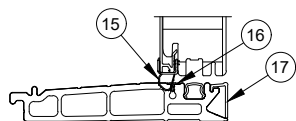
## Contents

|  |    |
|--|----|
| Product History.....   | 2  |
| Part Identification - X R and XX L.....                            | 3  |
| Part Identification - Jamb.....                                    | 4  |
| Part Identification - Stationary.....                              | 5  |
| Part Identification - Transom.....                                 | 6  |
| Part Identification - Transom Jamb.....                            | 7  |
| Panel Options.....   | 8  |
| Installation Parts.....  | 9  |
| Traditional Handle.....  | 10 |
| Contemporary Handle .....  | 15 |
| Traditional and Contemporary Handle - Keyed Cylinder.....          | 20 |
| Minimalist Handle.....   | 21 |
| Minimalist Handle - Keyed Cylinder .....                           | 30 |
| Hinge Hanging Location .....                                       | 31 |
| Hinges.....  | 32 |
| Miscellaneous Parts .....  | 33 |
| Miscellaneous Parts - Accessibility Sill .....                     | 40 |
| Miscellaneous Parts - Discontinued - No Longer Available (NA)..... | 42 |
| Lock Status Sensor Parts.....                                      | 43 |
| Aluminum Parts .....   | 44 |
| Aluminum Parts - Discontinued - No Longer Available (NA).....      | 46 |
| Vinyl Parts - Fabricated .....                                     | 47 |
| Wood Parts - Fabricated.....                                       | 48 |
| Weather Strip .....  | 49 |
| Weather Strip - Fabricated .....                                   | 50 |
| Sill Replacement - Configured Parts in OMS.....                    | 51 |
| Screen Replacement - Configured Parts in OMS.....                  | 52 |
| Service Only Parts.....  | 53 |

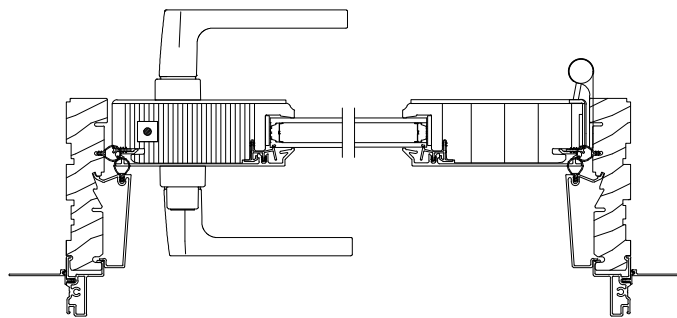
| Produced | Unit Type  | Features and Changes  |
|----------|--|---|
| 2021     | Ultimate Inswing French Door G2                              | 06/28/2021: Introduced the Ultimate Inswing French Door G2.<br>10/25/2021: Standard screen mesh changed to Marvin Bright View™. See Product Bulletin 793 for more details.  |
| 2022     | Ultimate Inswing French Door G2                              | 02/28/2022: The Ultimate Inswing French Door G2 is now available with Impact Zone 3 (IZ3) certification. See Product Bulletin 807 for more details.   |
| 2023     | Ultimate Inswing French Door G2<br>(2 1/4 panel option only) | 10/30/2023: An ERS coating became available as a standard option for current Triple Pane offerings. See Product Bulletin 904 for more details.  |
| 2024     | Ultimate Inswing French Door G2                              | 02/26/2024: Performance Sill color changes from Bronze to Ebony, see Product Bulletin 909 for more information. Added panel options, see Product Bulletin 910 for additional information.<br>04/29/2024: Replacement Sills were made available in Configured Parts in OMS.<br>10/28/2024: Accessibility Sill became available. See Product Bulletin 938 for more information. The Bronze Performance sill moved to Discontinued - No Longer Available status (DISC-NA). See Product Bulletin 909 for more information.<br>11/25/2024: Updated Adjustable Hinge Packages to G2 version, utilizing the current adjustable hinge with G2 fastener usage. |



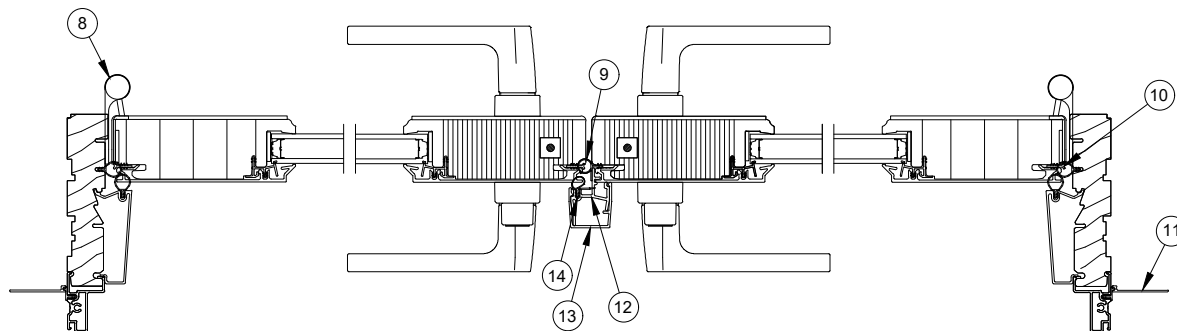
Head Jamb and  
Performance Sill Detail



Accessiblity Sill Detail



Jamb X R

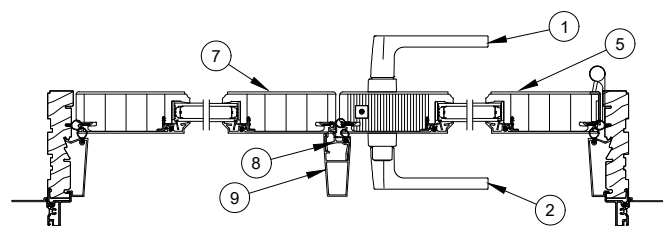


Jamb XX L

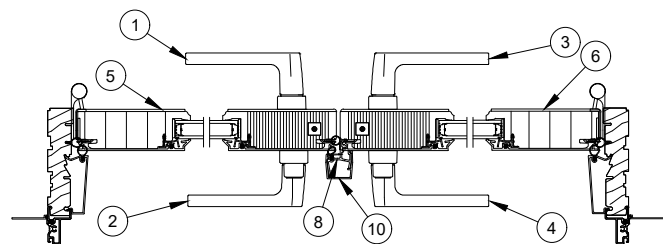
1. Head Jamb Nailing Fin, V119
2. Frame/Parting Stop Weather Strip, V3200
3. Jamb/Head Jamb Parting Stop, A3637
4. Sill Weather Strip, V2026
5. Secondary Sill Weather Strip, Inswing, V3239
6. Interior Sill Filler, V3120

7. Sill Liner, A3727
8. Adjustable Hinge
9. Astragal Panel Weather Strip, V3173
10. Wedge Frame Spacer, V2421
11. Jamb Nailing Fin, V104
12. Mull Base, A3633

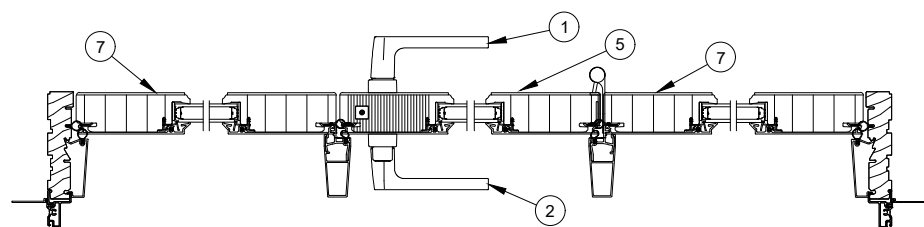
13. Astragal Cover, A3634
14. Astragal Base Weather Strip, V3208
15. Weather Strip, Accessibility Sill, V03406
16. Kerf Filler, Accessibility Sill, V03427
17. Sill Liner, Accessibility Sill, A03955



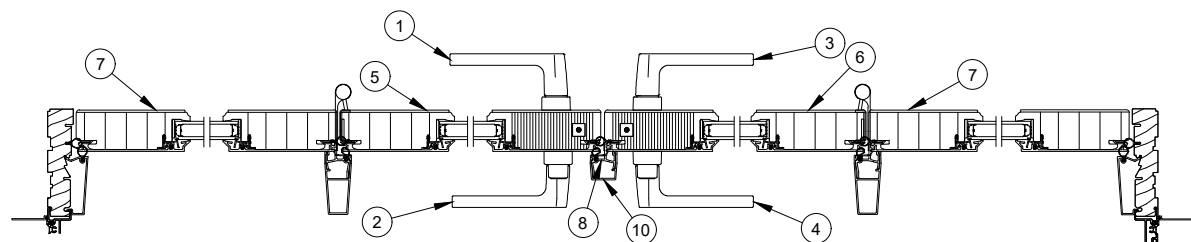
OX- R - Jamb



XX- L - Jamb

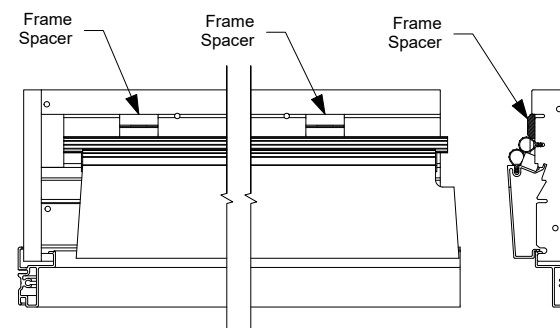


OXO R - Jamb Detail

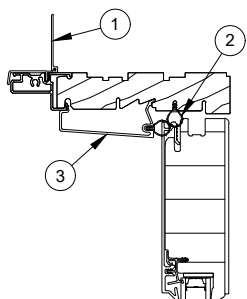


OXXO L - Jamb Detail

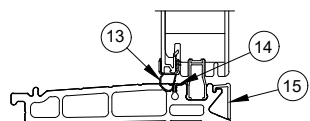
1. Active Handle, Interior
2. Active Handle, Exterior
3. Inactive Handle, Interior
4. Inactive Handle, Exterior
5. Active Panel
6. Inactive Panel
7. Stationary Panel
8. Mull Base, A3633
9. Mull Post, A3635
10. Astragal Cover, A3634



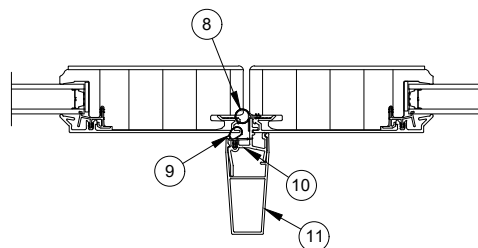
NOTE: Apply Frame Spacers at all pre-marked locations on stationary jambs.



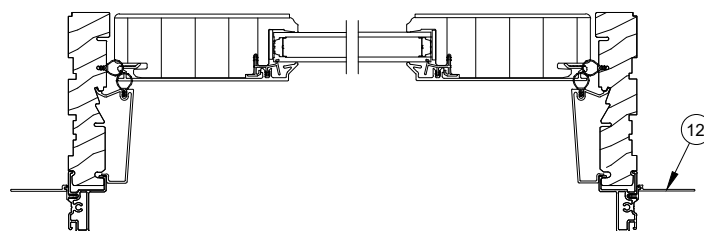
Head Jamb and  
Performance Sill Detail



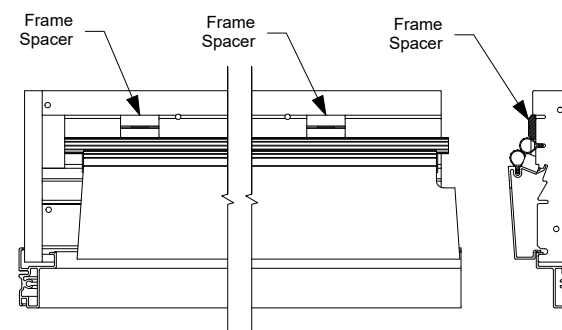
Accessibility Sill Detail



OO Meeting Stile Detail

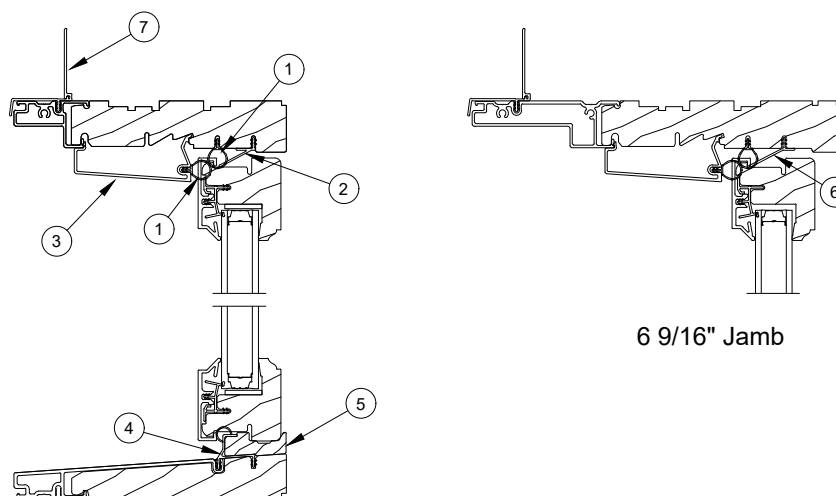


Stationary Jamb Detail

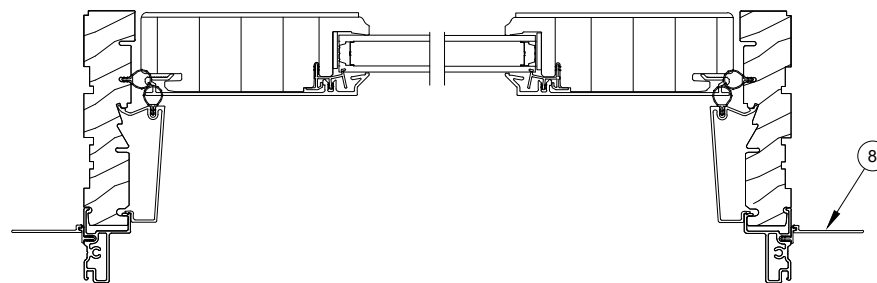


NOTE: Apply Frame Spacers at all pre-marked locations on stationary jambs.

- |   |   |
|---|---|
| 1. Head Jamb Nailing Fin, V119                  | 9. Astragal Base Weather Strip, V3208         |
| 2. Frame/Parting Stop Weather Strip, V3200      | 10. Mull Base, A3633                          |
| 3. Jamb/Head Jamb Parting Stop, A3637           | 11. Mull Post, A3635                          |
| 4. Sill Weather Strip, V2026                    | 12. Jamb Nailing Fin, V104                    |
| 5. Secondary Sill Weather Strip, Inswing, V3239 | 13. Weather Strip, Accessibility Sill, V03406 |
| 6. Stationary Block, Interior Sill, A3757       | 14. Kerf Filler, Accessibility Sill, V03427   |
| 7. Sill Liner, A3727                            | 15. Sill Liner, Accessibility Sill, A03955    |
| 8. Astragal Panel Weather Strip, V3173          |   |

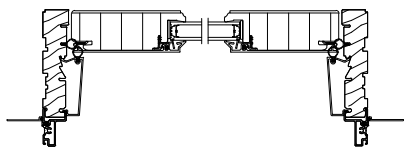


Head Jamb and Sill

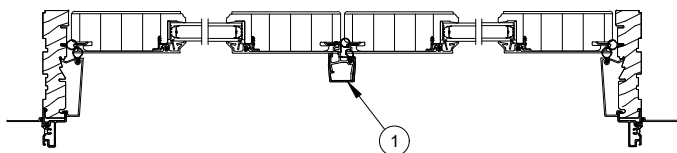


Jamb

- |  |   |
|--|---|
| 1. Frame/Parting Stop Weather Strip, V3200 | 5. Interior Sill Filler, 1 3/4", W13565 |
| 2. Sash Retainer, 4 9/16" Jamb, V3122      | 6. Sash Retainer, 6 9/16" Jamb, V3141   |
| 3. Jamb/Head Jamb Parting Stop, A3637      | 7. Head Jamb Nailing Fin, V119          |
| 4. Sill Weather Strip, Transom, V3121      | 8. Jamb Nailing Fin, V104               |

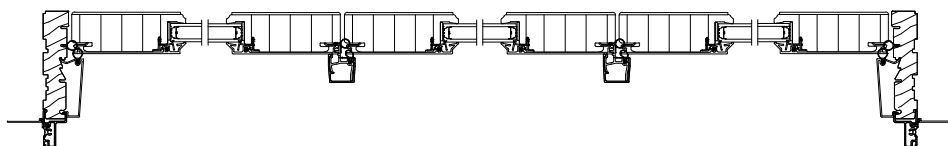


Single Panel Transom Jamb

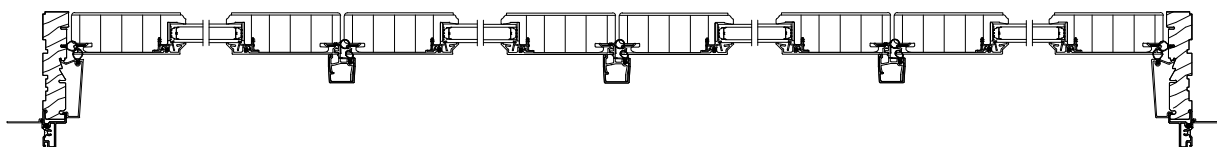


2 Panel Transom Jamb

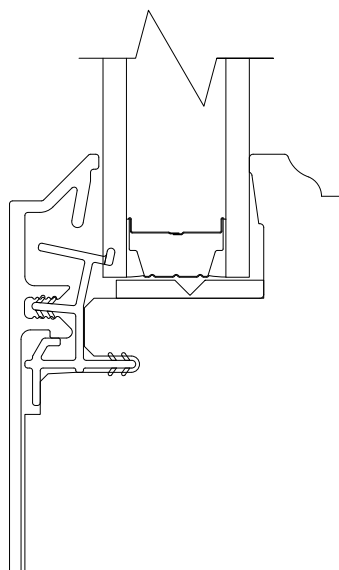
1. Astragal Cover, A3634



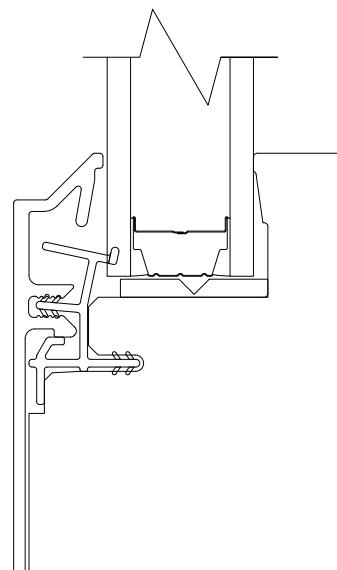
3 Panel Transom Jamb



4 Panel Transom Jamb



**Standard**  
Ogee Interior  
Putty Exterior

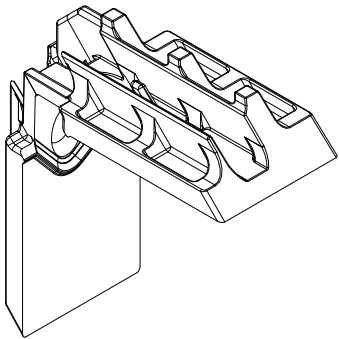


**Option**  
Square Interior  
Putty Exterior



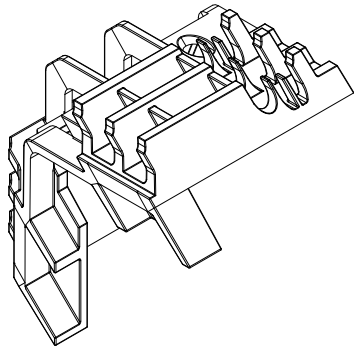
## 4 9/16" Upper Frame Key

| Color | PN       |
|-------|----------|
| Black | 11869925 |



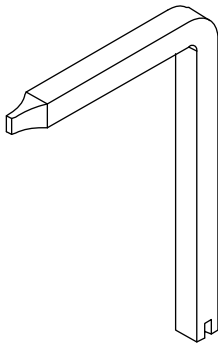
## 6 9/16" Upper Frame Key

| Color | PN       |
|-------|----------|
| Black | 11869926 |



## Construction Handle

| PN       |
|----------|
| 10830451 |



# Handle Assembly, Active, Keyed

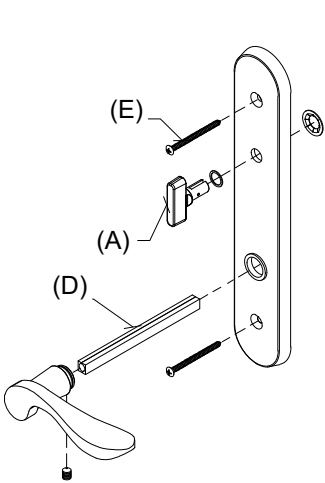
Mortise Lock and Multi-Point Lock Systems (Schlage “C” Keyway)

## Includes:

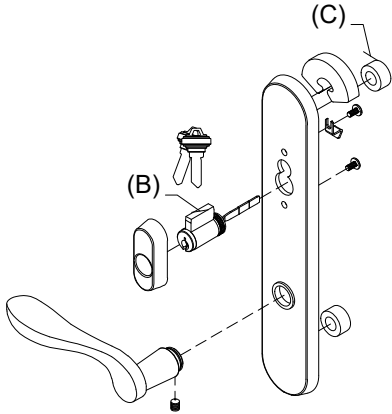
- 1 - Interior lever with spindle, escutcheon plate and hardware
- 1 - Exterior lever with escutcheon plate and hardware
- 1 - Thumb turn with hardware (A)
- 1 - Keyed cylinder with housing and hardware (includes 2 keys) (B)
- 1 - Exterior escutcheon plate gasket
- 2 - Lug Seal (C)
- 1 - Two piece spindle, 4.35” w/1 3/4” panel, or 5.06” w/2 1/4” panel (D)
- 2 - #10–32 x 2 1/8” Phillips oval head machine screws (w/1 3/4” Panel) (E) or
- 2 - #10–32 x 2 5/8” Phillips oval head machine screws (w/2 1/4” Panel) (E)
- 2 - Keys

| Handle Assembly - 1 3/4 Panel |          |
|-------------------------------|----------|
| Color                         | PN       |
| Satin Taupe                   | 10830304 |
| Antique Brass                 | 10830306 |
| White                         | 10830310 |
| Satin Chrome                  | 10830302 |
| Oil Rubbed Bronze             | 10148111 |
| Oil Rubbed Bronze PVD         | 10830300 |
| Brass PVD                     | 10830324 |
| Satin Nickel PVD              | 10830421 |
| Dark Bronze                   | 10830330 |
| Polished Chrome               | 10830308 |
| Matte Black                   | 10830450 |

| Handle Assembly - 2 1/4” Panel |          |
|--------------------------------|----------|
| Color                          | PN       |
| Satin Taupe                    | 21448114 |
| Antique Brass                  | 21448116 |
| White                          | 21448119 |
| Satin Chrome                   | 21448112 |
| Oil Rubbed Bronze              | 21448111 |
| Oil Rubbed Bronze PVD          | 21448118 |
| Brass PVD                      | 21448160 |
| Satin Nickel PVD               | 21448110 |
| Dark Bronze                    | 21448120 |
| Polished Chrome                | 21448117 |
| Matte Black                    | 21448131 |



Active Panel Interior



Active Panel Exterior

# Handle Assembly, Active, Non-Keyed

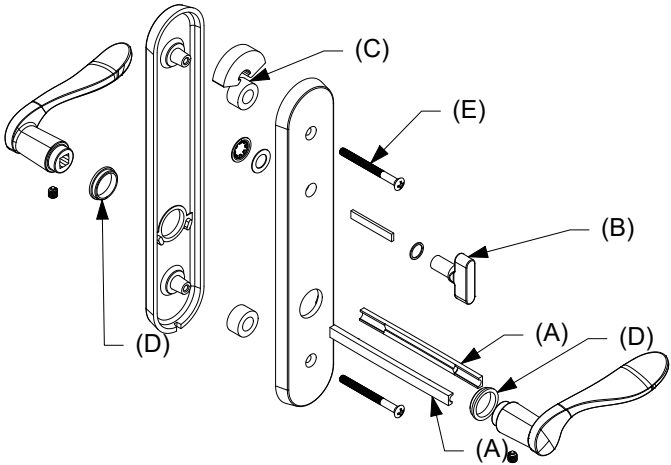
Mortise Lock and Multi-Point Lock Systems (Schlage “C” Keyway)

## Includes:

- 2 - Levers
- 2 - Lever bushings (D)
- 2 - Lug seals (C)
- 1 - Interior escutcheon
- 1 - Exterior escutcheon
- 1 - Thumb turn with actuator/tail piece (B)
- 1 - Two piece spindle, 4.35” w/1 3/4” panel, or 5.06” w/2 1/4” panel (A)
- 2 - #10–32 x 2 1/8” Phillips oval head machine screws (w/1 3/4” Panel) (E) or
- 2 - #10–32 x 2 5/8” Phillips oval head machine screws (w/2 1/4” Panel) (E)
- 2 - Set screws
- 1 - Allen wrench
- 1 - Installation instruction

| Handle Assembly - 1 3/4 Panel |          |
|-------------------------------|----------|
| Color                         | PN       |
| Satin Taupe                   | 10830514 |
| Antique Brass                 | 10830520 |
| White                         | 10830516 |
| Satin Chrome                  | 10830513 |
| Oil Rubbed Bronze             | 10830512 |
| Oil Rubbed Bronze PVD         | 10830510 |
| Brass PVD                     | 10830517 |
| Satin Nickel PVD              | 10830521 |
| Dark Bronze                   | 10830518 |
| Polished Chrome               | 10830515 |
| Matte Black                   | 10830519 |

| Handle Assembly - 2 1/4” Panel |          |
|--------------------------------|----------|
| Color                          | PN       |
| Satin Taupe                    | 21448174 |
| Antique Brass                  | 21448180 |
| White                          | 21448176 |
| Satin Chrome                   | 21448173 |
| Oil Rubbed Bronze              | 21448172 |
| Oil Rubbed Bronze PVD          | 21448170 |
| Brass PVD                      | 21448177 |
| Satin Nickel PVD               | 21448181 |
| Dark Bronze                    | 21448178 |
| Polished Chrome                | 21448175 |
| Matte Black                    | 21448179 |



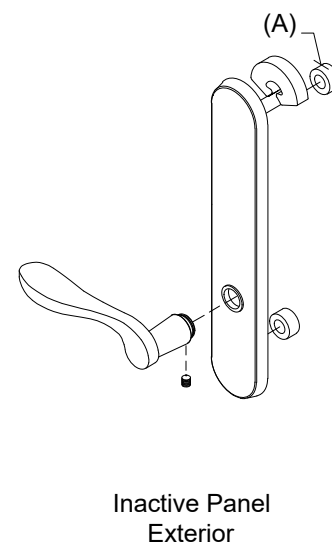
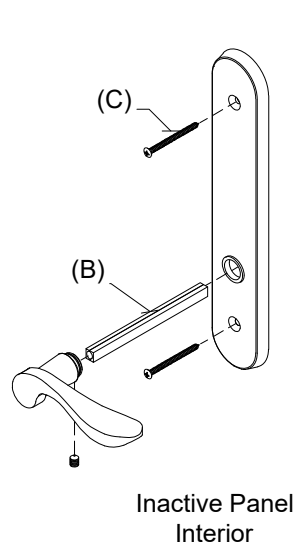
## Handle Assembly, Inactive/Dummy

### Includes:

- 1 - Interior lever with spindle, escutcheon plate and hardware
- 1 - Exterior lever with escutcheon plate and hardware
- 1 - Exterior escutcheon plate gasket
- 1 - Exterior escutcheon plate
- 2 - Lug seals (A)
- 1 - Two piece spindle, 4.35" (w/1 3/4" panel), or 5.06" (w/2 1/4" panel) (B)
- 2 - #10-32 x 2 1/8" Phillips oval head machine screws (w/1 3/4" Panel) (C) or
- 2 - #10-32 x 2 5/8" Phillips oval head machine screws (w/2 1/4" Panel) (C)

| Handle Assembly - 1 3/4" Panel |          |
|--------------------------------|----------|
| Color                          | PN       |
| Satin Taupe                    | 10830318 |
| Antique Brass                  | 10830312 |
| White                          | 10830316 |
| Satin Chrome                   | 10830320 |
| Oil Rubbed Bronze              | 10148154 |
| Oil Rubbed Bronze PVD          | 10830322 |
| Brass PVD                      | 10830326 |
| Satin Nickel PVD               | 10830422 |
| Dark Bronze                    | 10830328 |
| Polished Chrome                | 10830314 |
| Matte Black                    | 10148157 |

| Handle Assembly - 2 1/4" Panel |          |
|--------------------------------|----------|
| Color                          | PN       |
| Satin Taupe                    | 21448151 |
| Antique Brass                  | 21448147 |
| White                          | 21448150 |
| Satin Chrome                   | 21448153 |
| Oil Rubbed Bronze              | 21448154 |
| Oil Rubbed Bronze PVD          | 21448145 |
| Brass PVD                      | 21448161 |
| Satin Nickel PVD               | 21448133 |
| Dark Bronze                    | 21448162 |
| Polished Chrome                | 21448148 |
| Matte Black                    | 21448163 |



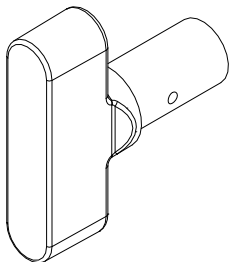
## Thumb Turn, Traditional

For Keyed Handle

### Includes:

Thumb Turn Washer  
Thumb Turn Push Nut

| No Tail Piece/Actuator<br>(for keyed handle) |          |
|--|----------|
| Color  | PN       |
| Antique Brass                                | 10148483 |
| Satin Chrome                                 | 10148482 |
| Oil Rubbed Bronze                            | 10148481 |
| Oil Rubbed Bronze PVD                        | 10148485 |
| Polished Chrome                              | 10148488 |
| Brass PVD                                    | 10148484 |
| Satin Nickel PVD                             | 10148487 |
| Satin Taupe                                  | 10148486 |
| Dark Bronze                                  | 10148479 |
| White  | 10148489 |
| Matte Black                                  | 10148480 |



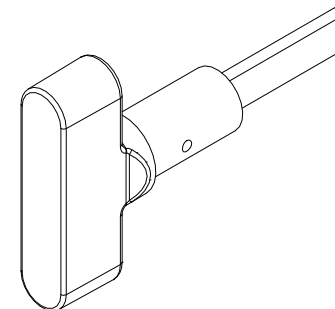
## Thumb Turn, Traditional with Actuator/Tail Piece

For Non-Keyed Handle

### Includes:

Actuator/Tailpiece  
Thumb Turn Washer  
Thumb Turn Push Nut

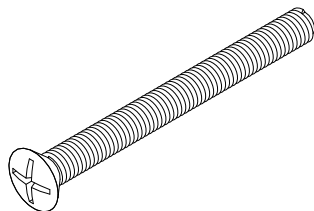
| With Tail Piece/Actuator<br>(for non-keyed handle) |          |
|--|----------|
| Color  | PN       |
| Antique Brass                                      | 10148495 |
| Satin Chrome                                       | 10148494 |
| Oil Rubbed Bronze                                  | 10148493 |
| Oil Rubbed Bronze PVD                              | 10148497 |
| Polished Chrome                                    | 10148500 |
| Brass PVD  | 10148496 |
| Satin Nickel PVD                                   | 10148499 |
| Satin Taupe  | 10148498 |
| Dark Bronze  | 10148491 |
| White  | 10148501 |
| Matte Black  | 10148492 |



## #10-32 x 2 1/8" Phillips Oval Head Machine Screw

For 1 3/4" Panels

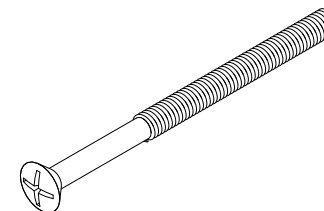
| Color                 | PN       |
|-----------------------|----------|
| Satin Taupe           | 11800616 |
| Antique Brass         | 00143038 |
| Satin Chrome          | 00143031 |
| White                 | 00143036 |
| Oil Rubbed Bronze     | 00143032 |
| Oil Rubbed Bronze PVD | 11800160 |
| Brass PVD             | 11800615 |
| Satin Nickel PVD      | 11800190 |
| Dark Bronze           | 11800654 |
| Matte Black           | 11800181 |



## #10-32 x 2 5/8" Phillips Oval Head Machine Screw

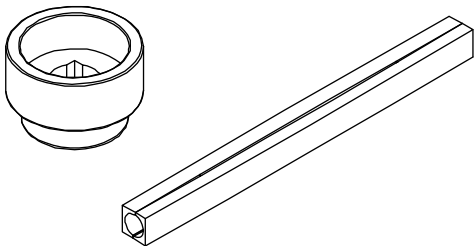
For 2 1/4" Panels

| Color                 | PN       |
|-----------------------|----------|
| Satin Taupe           | 11800237 |
| Antique Brass         | 11800234 |
| Satin Chrome          | 11800233 |
| Polished Chrome       | 11800239 |
| White                 | 11800240 |
| Oil Rubbed Bronze     | 11800232 |
| Oil Rubbed Bronze PVD | 11800236 |
| Brass PVD             | 11800235 |
| Satin Nickel PVD      | 11800238 |
| Dark Bronze           | 11800231 |
| Matte Black           | 11800179 |



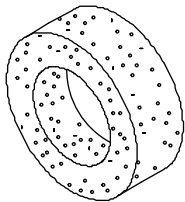
## Handle Extension

| 3/4" Handle Extension<br>(Requires 3/4" Spindle Extension) |          | 3/8" Handle Extension<br>(Requires 3/8" Spindle Extension) |          |
|--|----------|--|----------|
| Color  | PN       | Color  | PN       |
| Satin Taupe  | 10833060 | Satin Taupe  | 10833049 |
| Antique Brass  | 10833057 | Antique Brass  | 10833046 |
| White  | 10833063 | White  | 10833052 |
| Satin Chrome   | 10833056 | Satin Chrome   | 10833045 |
| Oil Rubbed Bronze  | 10833038 | Oil Rubbed Bronze  | 10833044 |
| Oil Rubbed Bronze PVD                                      | 10833059 | Oil Rubbed Bronze PVD                                      | 10833048 |
| Brass PVD  | 10833058 | Brass PVD  | 10833047 |
| Satin Nickel PVD   | 10830139 | Satin Nickel PVD   | 10833050 |
| Dark Bronze  | 10833054 | Dark Bronze  | 10833042 |
| Polished Chrome  | 10833062 | Polished Chrome  | 10833051 |
| Matte Black  | 10833055 | Matte Black  | 10833043 |



## Lug Seal

| PN       |
|----------|
| 00142046 |



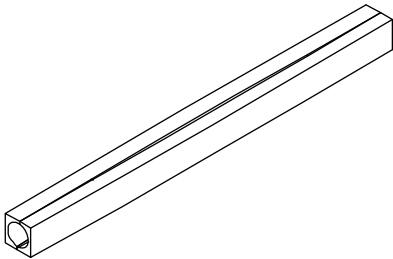
## Spindle/Spindle Extension Kit

### Includes:

- 1 - 2 pc. Spindle
- 2 - Set screws

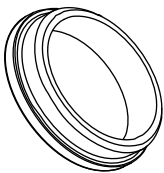
| Spindle     |        |          |
|-------------|--------|----------|
| Panel Usage | Length | PN       |
| 1 3/4"      | 4.35"  | 18900392 |
| 2 1/4"      | 5.06"  | 18900393 |

| Spindle with 3/4" Lever Extension |        |          |
|-----------------------------------|--------|----------|
| Panel Usage                       | Length | PN       |
| 1 3/4"                            | 5.06"  | 18900393 |
| 2 1/4"                            | 5.812" | 00142051 |



## Lever Bushing, Traditional

| Color   | PN       |
|---------|----------|
| Clear   | 02062201 |
| Gray    | 10148448 |
| Gold    | 10148447 |
| Natural | 02062202 |
| Black   | 10148020 |

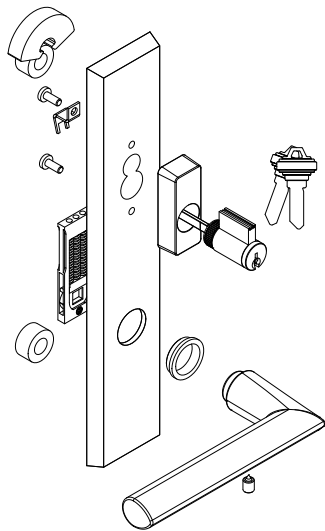


## Contemporary Handle, Exterior, Active, Keyed

**Includes:**

- 1 - Handle
- 1 - Exterior escutcheon with bushing
- 1 - Keyed cylinder, includes 2 keys
- 2 - Lug seals
- 1 - Spring cartridge
- 1 - Set screw
- 1 - Installation instruction
- 1 - Hex wrench

| LH Inswing Panel uses LH PN<br>RH Inswing Panel uses RH PN |          |          |
|--|----------|----------|
| Color  | LH PN    | RH PN    |
| Matte Black  | 11870120 | 11870112 |
| Satin Nickel PVD   | 11870122 | 11870114 |
| Oil Rubbed Bronze PVD                                      | 11870124 | 11870116 |
| Dark Bronze  | 11870126 | 11870118 |



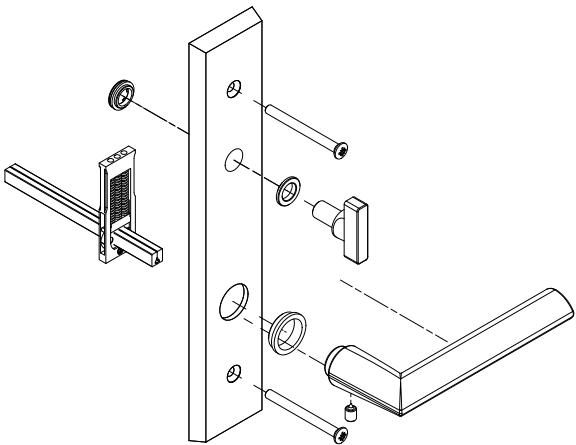
LH shown

## Contemporary Handle, Interior, Active, Keyed

**Includes:**

- 1 - Handle
- 1 - Interior escutcheon with bushings
- 1 - Spring cartridge
- 1 - Thumb turn
- 2 - Machine screws, 2 1/4" Doors
- 2 - Machine screws, 1 3/4" Doors
- 1 - Split spindle, 2 1/4" Doors
- 1 - Split spindle, 1 3/4" Doors
- 1 - Set screw
- 1 - Installation instruction
- 1 - Hex wrench

| LH Inswing Panel uses RH PN<br>RH Inswing Panel uses LH PN |          |          |
|--|----------|----------|
| Color  | LH PN    | RH PN    |
| Matte Black  | 11870104 | 11870097 |
| Satin Nickel PVD   | 11870106 | 11870098 |
| Oil Rubbed Bronze PVD                                      | 11870108 | 11870100 |
| Dark Bronze  | 11870110 | 11870102 |



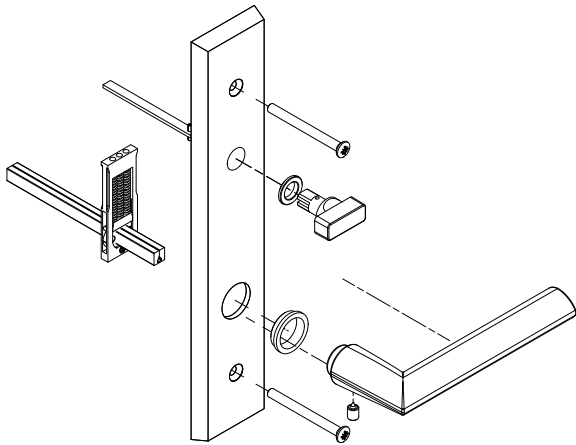
RH shown

# Contemporary Handle, Interior, Active, Non-Keyed

## Includes:

- 1 - Handle
- 1 - Interior escutcheon with bushings
- 1 - Spring cartridge
- 1 - Thumb turn
- 2 - Machine screws, 2 1/4" Doors
- 2 - Machine screws, 1 3/4" Doors
- 1 - Split spindle, 2 1/4" Doors
- 1 - Split spindle, 1 3/4" Doors
- 1 - Set screw
- 1 - Installation instruction
- 1 - Hex wrench

| LH Inswing Panel uses RH PN<br>RH Inswing Panel uses LH PN |          |          |
|--|----------|----------|
| Color  | LH PN    | RH PN    |
| Matte Black  | 11870136 | 11870128 |
| Satin Nickel PVD   | 11870138 | 11870130 |
| Oil Rubbed Bronze PVD                                      | 11870139 | 11870132 |
| Dark Bronze  | 11870143 | 11870133 |



RH shown

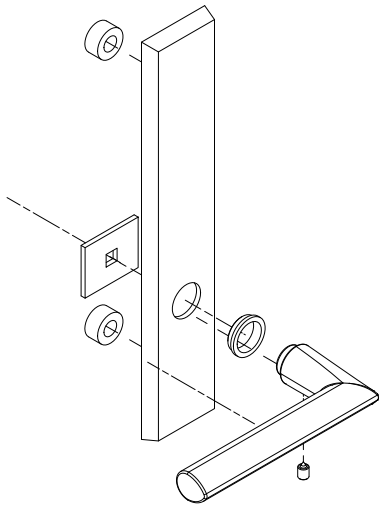


# Contemporary Handle, Exterior, Non-Keyed, Inactive/Dummy

## Includes:

- 1 - Handle
- 1 - Exterior escutcheon with bushings
- 2 - Lug seals
- 1 - Fixing plate
- 1 - Set screw
- 1 - Installation instruction
- 1 - Hex wrench

| LH Inswing Panel uses LH PN<br>RH Inswing Panel uses RH PN |          |          |
|--|----------|----------|
| Color  | LH PN    | RH PN    |
| Matte Black  | 11870153 | 11870145 |
| Satin Nickel PVD   | 11870154 | 11870146 |
| Oil Rubbed Bronze PVD                                      | 11870156 | 11870148 |
| Dark Bronze  | 11870158 | 11870149 |



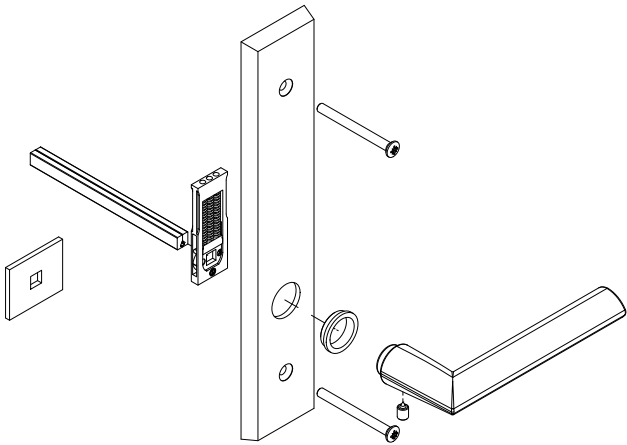
LH shown

# Contemporary Handle, Interior, Inactive/Dummy

## Includes:

- 1 - Handle
- 1 - Escutcheon with bushing
- 1 - Dummy fixing plate
- 1 - Spring cartridge
- 2 - Machine screws, 2 1/4" Doors
- 2 - Machine screws, 1 3/4" Doors
- 1 - Split spindle, 2 1/4" Doors
- 1 - Split spindle, 1 3/4" Doors
- 1 - Set screw
- 1 - Installation instruction
- 1 - Hex wrench

| LH Inswing Panel uses RH PN<br>RH Inswing Panel uses LH PN |          |          |
|--|----------|----------|
| Color  | LH PN    | RH PN    |
| Matte Black  | 11870169 | 11870160 |
| Satin Nickel PVD   | 11870171 | 11870162 |
| Oil Rubbed Bronze PVD                                      | 11870172 | 11870164 |
| Dark Bronze  | 11870174 | 11870166 |



RH shown

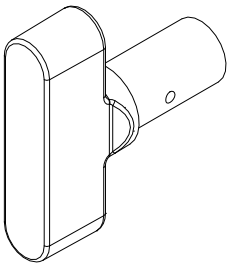
# Thumb Turn, Contemporary

For Keyed Handle

**Includes:**

- Thumb Turn Washer
- Thumb Turn Push Nut

| No Tail Piece/Actuator<br>(for keyed handle) |          |
|--|----------|
| Color  | PN       |
| Oil Rubbed Bronze PVD                        | 10148485 |
| Satin Nickel PVD                             | 10148487 |
| Dark Bronze                                  | 10148479 |
| Matte Black                                  | 10148480 |



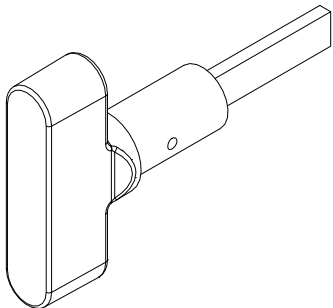
# Thumb Turn, Contemporary with Actuator/Tail Piece

For Non-Keyed Handle

**Includes:**

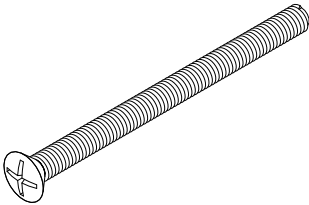
- Actuator/Tailpiece
- Thumb Turn Washer
- Thumb Turn Push Nut

| With Tail Piece/Actuator<br>(for non-keyed handle) |          |
|--|----------|
| Color  | PN       |
| Oil Rubbed Bronze PVD                              | 10148497 |
| Satin Nickel PVD                                   | 10148499 |
| Dark Bronze  | 10148491 |
| Matte Black  | 10148492 |



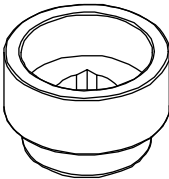
### M5 x 65mm Phillips Oval Head Machine Screw

| Color                 | PN       |
|-----------------------|----------|
| Oil Rubbed Bronze PVD | 10148456 |
| Satin Nickel PVD      | 10148457 |
| Dark Bronze           | 10148455 |
| Matte Black           | 11800694 |



### 3/4" Handle Extension

| Color                 | PN       |
|-----------------------|----------|
| Oil Rubbed Bronze PVD | 10148421 |
| Satin Nickel PVD      | 10148422 |
| Dark Bronze           | 10148420 |
| Matte Black           | 10148445 |



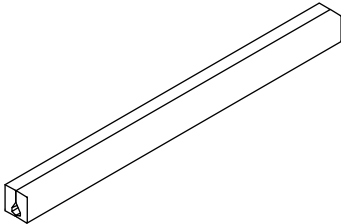
### Spindle Kit

#### Includes:

- 1 - 2 pc. Spindle
- 2 - Set screws

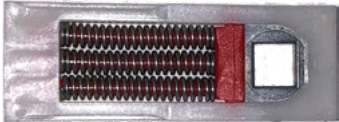
NOTE: Longer length spindles are intended for use with the 3/4" Handle Extension.

| 1 3/4" Panels |          | 2 1/4" Panels |          |
|---------------|----------|---------------|----------|
| Length        | PN       | Length        | PN       |
| 4 3/4"        | 10148414 | 5 1/8"        | 10148458 |
| 5 1/2"        | 10148415 | 5 29/32"      | 10148459 |



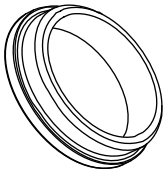
### Spring Cartridge

| PN       |
|----------|
| 10830452 |



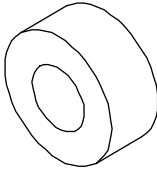
### Lever Bushing, Contemporary

| Color   | PN       |
|---------|----------|
| Gray    | 10148448 |
| Natural | 02062202 |
| Black   | 10148020 |



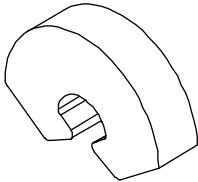
### Gasket Post, Lug Seal

| PN       |
|----------|
| 10148404 |



### Gasket, Top Backplate

| PN       |
|----------|
| 10148405 |



# Keyed Cylinder

(Schalge "C" keyway)  
For service replacement only.

## Includes:

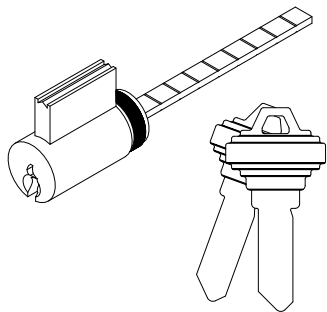
2 - Keys

NOTE: For Keyed Alike orders, use program C87P2

Polished Chrome, White, Satin Nickel PVD, Matte Black use Chrome Face

Satin Taupe, Antique Brass, Satin Chrome, Oil Rubbed Bronze, Oil Rubbed Bronze PVD, Brass PVD, Dark Bronze use Brass Face

| Traditional and Contemporary Handle |          |              |          |
|-------------------------------------|----------|--------------|----------|
| 1 3/4" Panel                        |          | 2 1/4" Panel |          |
| Color                               | PN       | Color        | PN       |
| Brass Face                          | 10830211 | Brass Face   | 10830212 |
| Chrome Face                         | 10830208 | Chrome Face  | 10830209 |

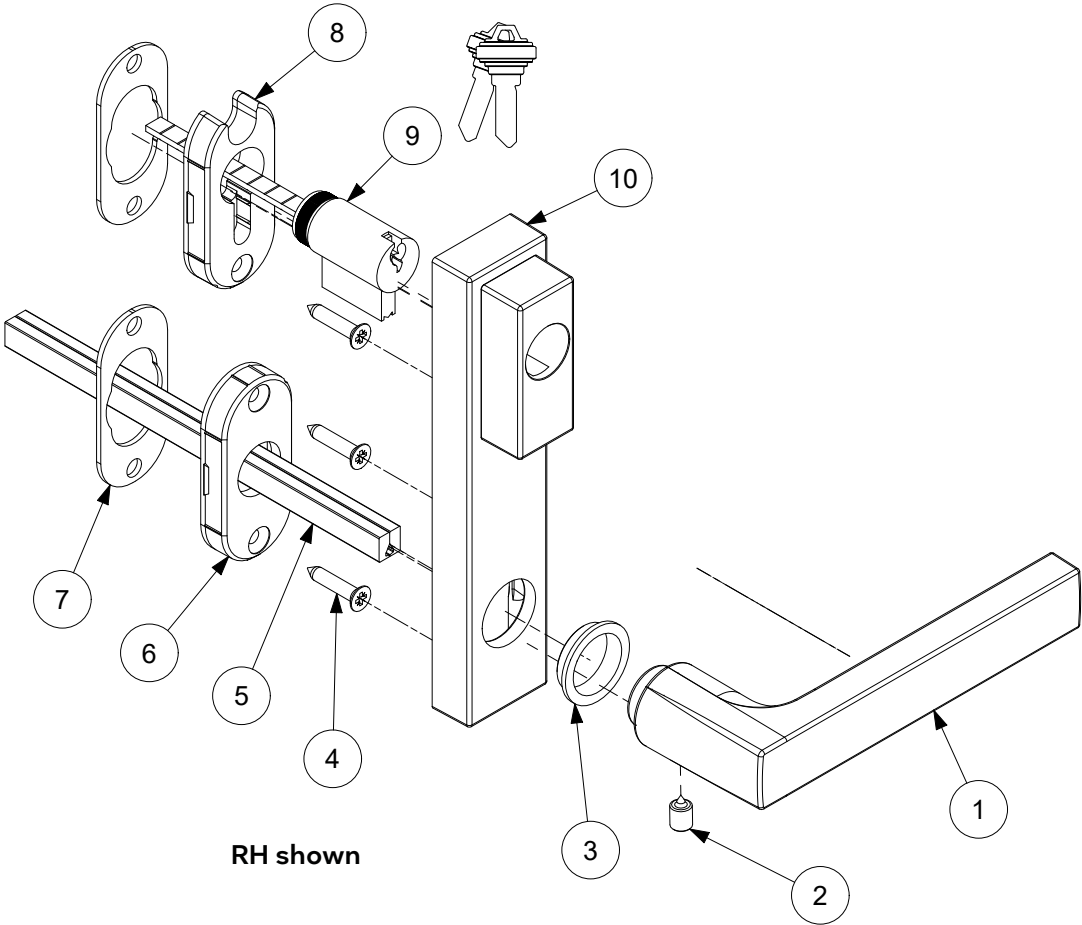


# Minimalist Handle, Exterior, Active, Keyed

## Includes:

- (1) Lever handle
  - (2) Set screw
  - (3) Lever bushing
  - (4) Wood screw, qty 3
  - (5) Split spindle, 2 1/4" doors
  - (5) Split spindle, 1 3/4" doors
  - (6) Handle rosette base
  - (7) Gasket, rosette base, qty 2
  - (8) Cylinder rosette base
  - (9) Keyed cylinder (includes 2 keys)
  - (10) Exterior Escutcheon with cylinder housing
- Installation instruction  
Hex wrench

| LH Inswing Panel uses LH PN<br>RH Inswing Panel uses RH PN |          |          |
|--|----------|----------|
| Color  | LH PN    | RH PN    |
| Matte Black  | 11870040 | 11870032 |
| Satin Nickel PVD   | 11870042 | 11870034 |
| Oil Rubbed Bronze PVD                                      | 11870044 | 11870036 |
| Dark Bronze  | 11870046 | 11870038 |

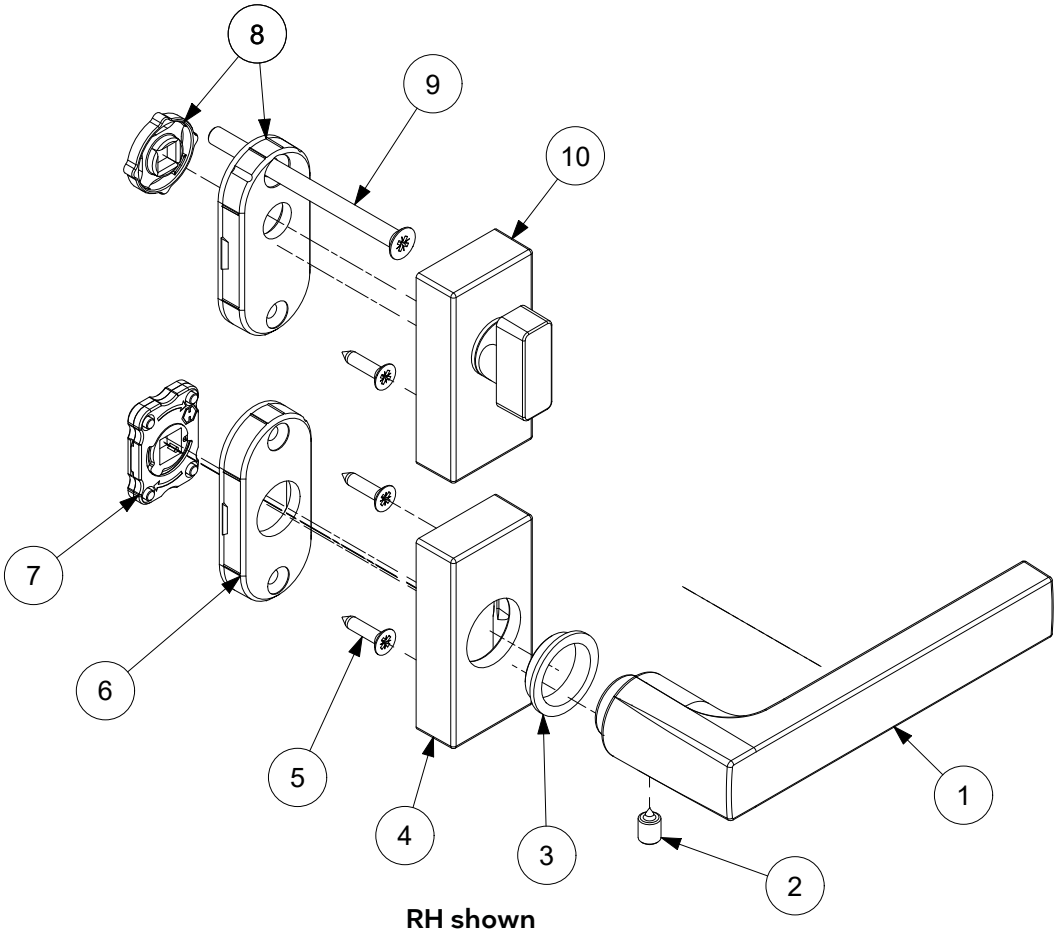


# Minimalist Handle, Interior, Active, Keyed

## Includes:

- (1) Lever handle
- (2) Set screw
- (3) Lever bushing
- (4) Lever rosette
- (5) Wood screws, qty 3
- (6) Lever rosette base
- (7) Spring cartridge
- (8) Thumb turn rosette base with washer
- (9) M5 x 70 machine screw
- (9) M5 x 60 machine screw
- (10) Thumb turn rosette assembly

| LH Inswing Panel uses RH PN<br>RH Inswing Panel uses LH PN |          |          |
|--|----------|----------|
| Color  | LH PN    | RH PN    |
| Matte Black  | 11870008 | 11870001 |
| Satin Nickel PVD   | 11870010 | 11870002 |
| Oil Rubbed Bronze PVD                                      | 11870012 | 11870004 |
| Dark Bronze  | 11870014 | 11870006 |

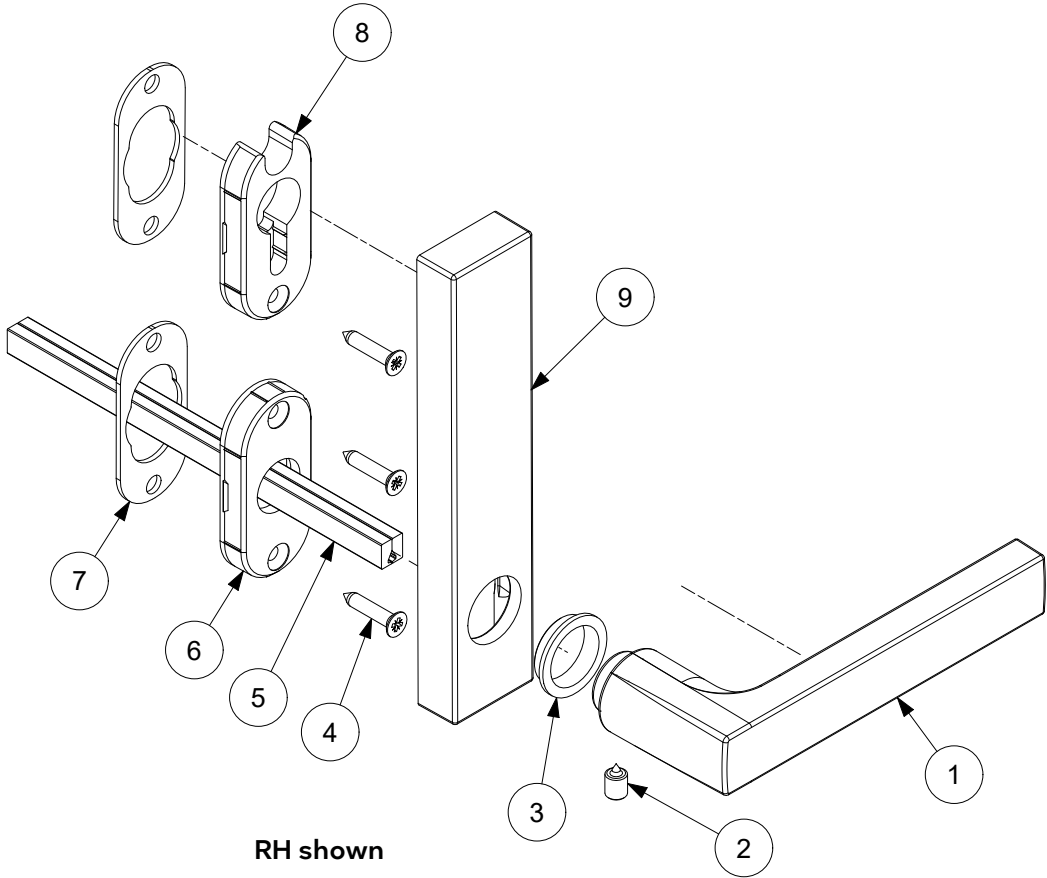


# Minimalist Handle, Exterior, Active, Non-Keyed

## Includes:

- (1) Lever handle
- (2) Set screw
- (3) Lever bushing
- (4) Wood screws, qty 3
- (5) Split spindle, 2 1/4" doors
- (5) Split spindle, 1 3/4" doors
- (6) Lever rosette base with gasket
- (7) Gasket, rosette base, qty 2
- (8) Cylinder rosette base with gasket
- (9) Backplate, exterior, non-keyed
- Installation instruction

| LH Inswing Panel uses LH PN<br>RH Inswing Panel uses RH PN |          |          |
|--|----------|----------|
| Color  | LH PN    | RH PN    |
| Matte Black  | 11870024 | 11870017 |
| Satin Nickel PVD   | 11870026 | 11870018 |
| Oil Rubbed Bronze PVD                                      | 11870028 | 11870020 |
| Dark Bronze  | 11870030 | 11870022 |

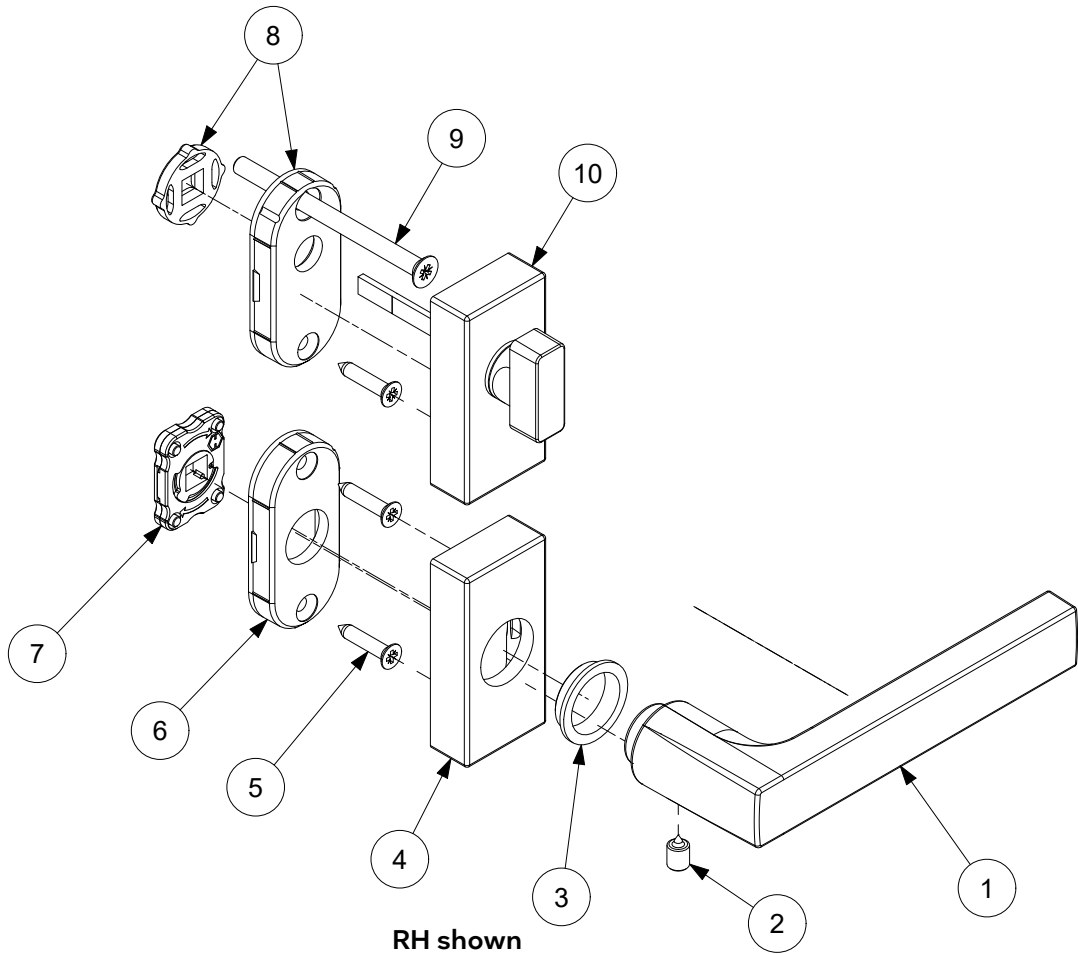


# Minimalist Handle, Interior, Active, Non-Keyed

## Includes:

- (1) Lever handle
- (2) Set screw
- (3) Lever bushing
- (4) Lever rosette
- (5) Wood screws, qty 3
- (6) Lever rosette base
- (7) Spring cartridge
- (8) Thumb turn rosette base with washer
- (9) M5 x 70 machine screw
- (9) M5 x 60 machine screw
- (10) Thumb turn rosette assembly

| LH Inswing Panel uses RH PN<br>RH Inswing Panel uses LH PN |          |          |
|--|----------|----------|
| Color  | LH PN    | RH PN    |
| Matte Black  | 11870056 | 11870048 |
| Satin Nickel PVD   | 11870058 | 11870050 |
| Oil Rubbed Bronze PVD                                      | 11870060 | 11870052 |
| Dark Bronze  | 11870062 | 11870054 |



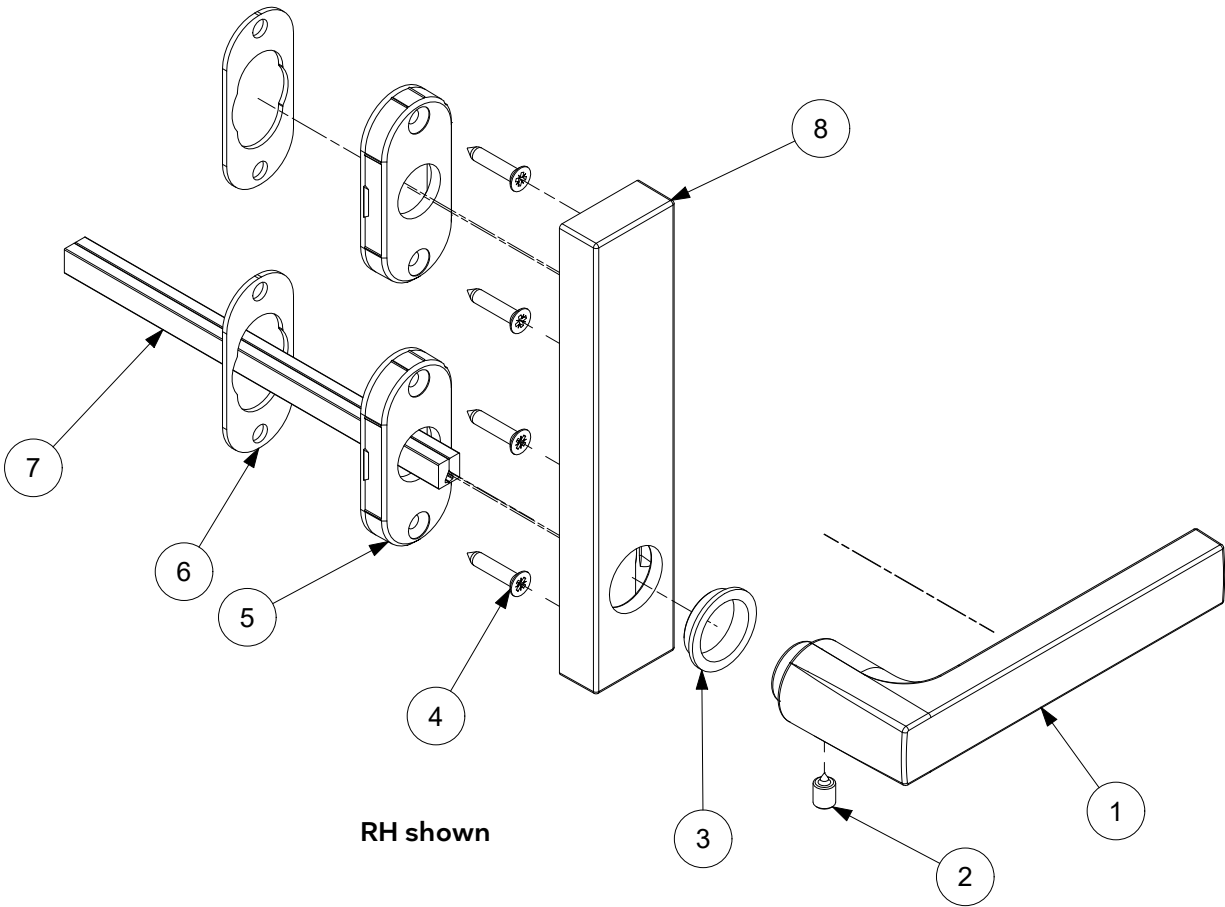


# Minimalist Handle, Exterior, Inactive/Dummy

## Includes:

- (1) Lever handle
  - (2) Set screw
  - (3) Lever bushing
  - (4) Wood screws, qty 4
  - (5) Lever rosette base, qty 2
  - (6) Lever rosette gasket, qty 2
  - (7) Split spindle, 2 1/4" Doors
  - (7) Split spindle, 1 3/4" Doors
  - (8) Backplate, escutcheon, non-keyed
- Hex wrench  
Installation instruction

| LH Inswing Panel uses LH PN<br>RH Inswing Panel uses RH PN |          |          |
|--|----------|----------|
| Color  | LH PN    | RH PN    |
| Matte Black  | 11870072 | 11870064 |
| Satin Nickel PVD   | 11870074 | 11870066 |
| Oil Rubbed Bronze PVD                                      | 11870076 | 11870069 |
| Dark Bronze  | 11870078 | 11870071 |

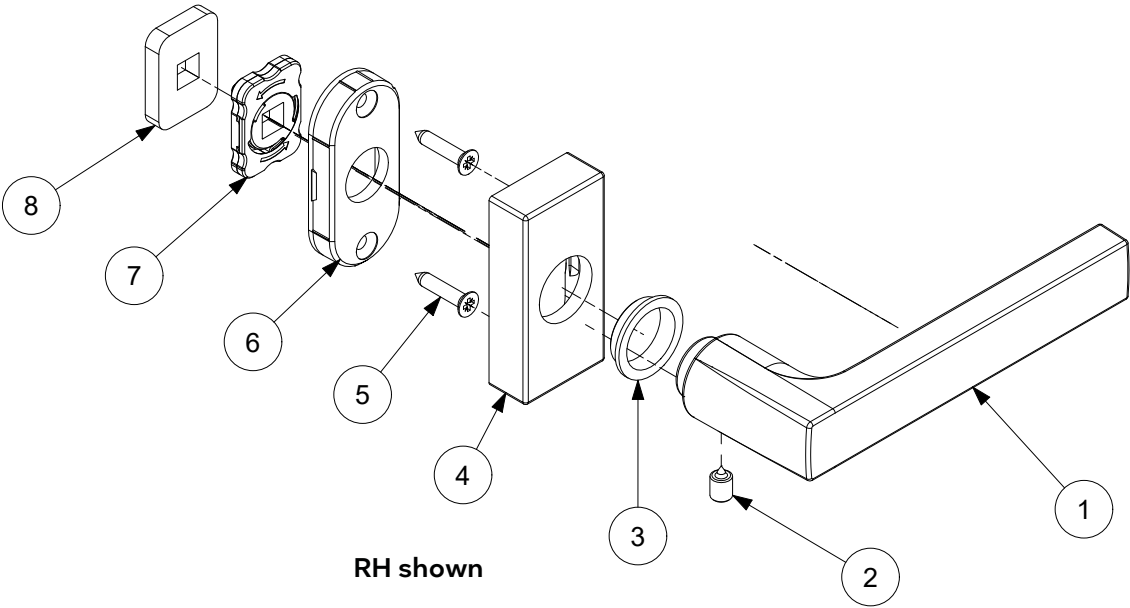


# Minimalist Handle, Interior, Inactive/Dummy

## Includes:

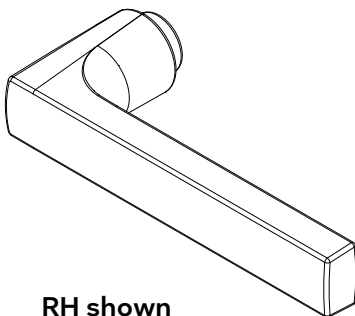
- (1) Lever handle
  - (2) Set screw
  - (3) Lever bushing
  - (4) Lever rosette
  - (5) Wood screws, qty 2
  - (6) Lever rosette base
  - (7) Spring cartridge
  - (8) Fixing plate
- Installation instruction  
Hex wrench

| LH Inswing Panel uses RH PN<br>RH Inswing Panel uses LH PN |          |          |
|--|----------|----------|
| Color  | LH PN    | RH PN    |
| Matte Black  | 11870088 | 11870081 |
| Satin Nickel PVD   | 11870090 | 11870082 |
| Oil Rubbed Bronze PVD                                      | 11870092 | 11870084 |
| Dark Bronze  | 11870094 | 11870086 |



## Lever Handle

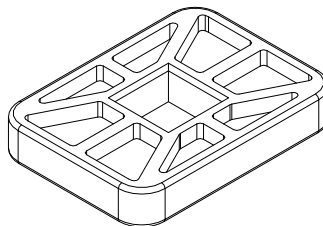
| Color                 | LH PN    | RH PN    |
|-----------------------|----------|----------|
| Matte Black           | 11869951 | 11869950 |
| Satin Nickel PVD      | 11869953 | 11869952 |
| Oil Rubbed Bronze PVD | 11869955 | 11869954 |
| Dark Bronze           | 11869957 | 11869956 |



RH shown

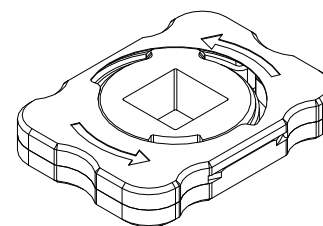
## Fixing Plate, Dummy

| PN       |
|----------|
| 11869978 |



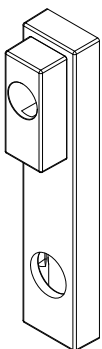
## Spring Cartridge

| PN       |
|----------|
| 11869979 |



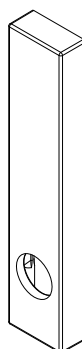
## Backplate, Exterior, Keyed

| Color                 | PN       |
|-----------------------|----------|
| Matte Black           | 11869960 |
| Satin Nickel PVD      | 11869961 |
| Oil Rubbed Bronze PVD | 11869962 |
| Dark Bronze           | 11869963 |



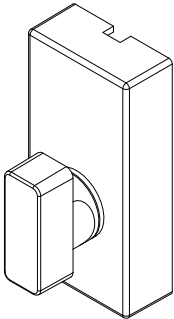
## Backplate, Exterior, Non-Keyed

| Color                 | PN       |
|-----------------------|----------|
| Matte Black           | 11869964 |
| Satin Nickel PVD      | 11869965 |
| Oil Rubbed Bronze PVD | 11869966 |
| Dark Bronze           | 11869967 |



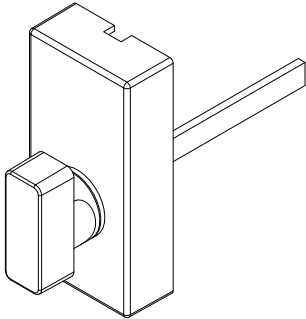
### Thumb Turn Rosette Assembly, Keyed

| Color                 | PN       |
|-----------------------|----------|
| Matte Black           | 11869972 |
| Satin Nickel PVD      | 11869973 |
| Oil Rubbed Bronze PVD | 11869974 |
| Dark Bronze           | 11869975 |



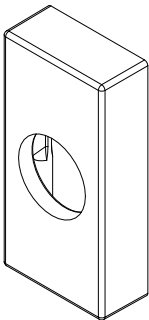
### Thumb Turn Rosette Assembly, Non-Keyed

| Color                 | PN       |
|-----------------------|----------|
| Matte Black           | 11869985 |
| Satin Nickel PVD      | 11869986 |
| Oil Rubbed Bronze PVD | 11869988 |
| Dark Bronze           | 11869987 |



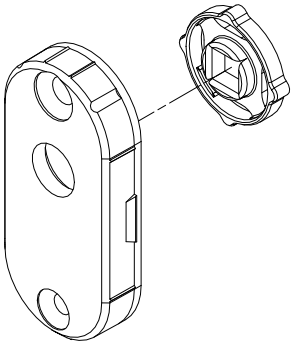
### Handle Rosette

| Color                 | PN       |
|-----------------------|----------|
| Matte Black           | 11869968 |
| Satin Nickel PVD      | 11869969 |
| Oil Rubbed Bronze PVD | 11869970 |
| Dark Bronze           | 11869971 |



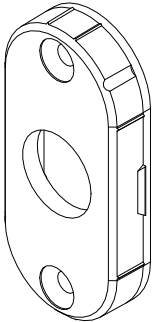
### Thumb Turn Rosette Base and Washer

| PN       |
|----------|
| 11869983 |



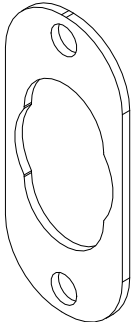
### Handle Rosette Base

| PN       |
|----------|
| 11869981 |



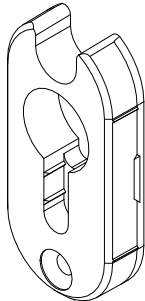
### Gasket, Rosette Base

| PN       |
|----------|
| 11869980 |



### Cylinder Rosette Base

| PN       |
|----------|
| 11869982 |

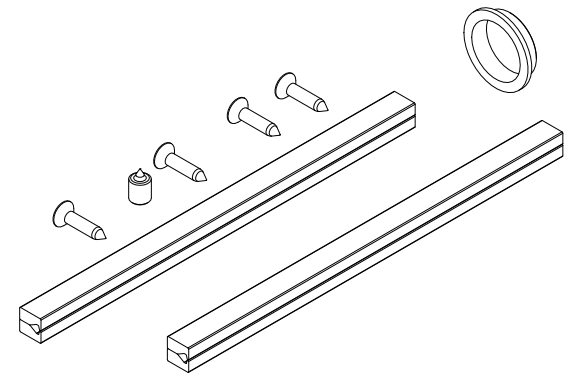


## Field Service Parts Kit, Exterior

**Includes:**

- 4 - 3.9x19MM screw
- 1 - Set screw
- 1 - 8 x 130 mm spindle
- 1 - 8 x 140 mm spindle
- 1 - Lever bushing
- 1 - Hex wrench

| PN       |
|----------|
| 11844035 |

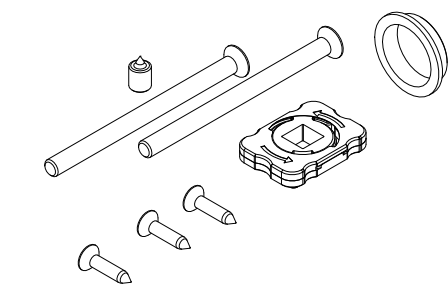


## Field Service Parts Kit, Interior

**Includes:**

- 1 - Set screw
- 1 - M5 x 60 machine screw
- 1 - M5 x 70 machine screw
- 3 - 3.9 x 19 mm screw
- 1 - Spring cartridge
- 1 - Lever bushing
- 1 - Hex wrench

| PN       |
|----------|
| 11844036 |



# Keyed Cylinder

(Schalge "C" keyway)  
For service replacement only.

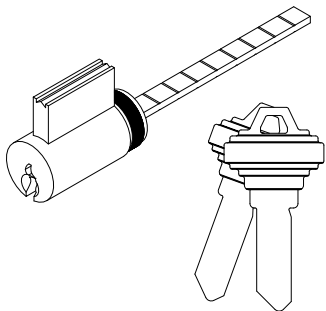
## Includes:

2 - Keys

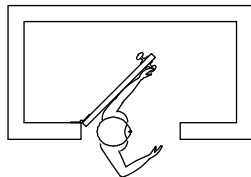
NOTE: For Keyed Alike orders, use program C87P2

Satin Nickel PVD and Matte Black use Chrome Face  
Oil Rubbed Bronze PVD and Dark Bronze use Brass Face

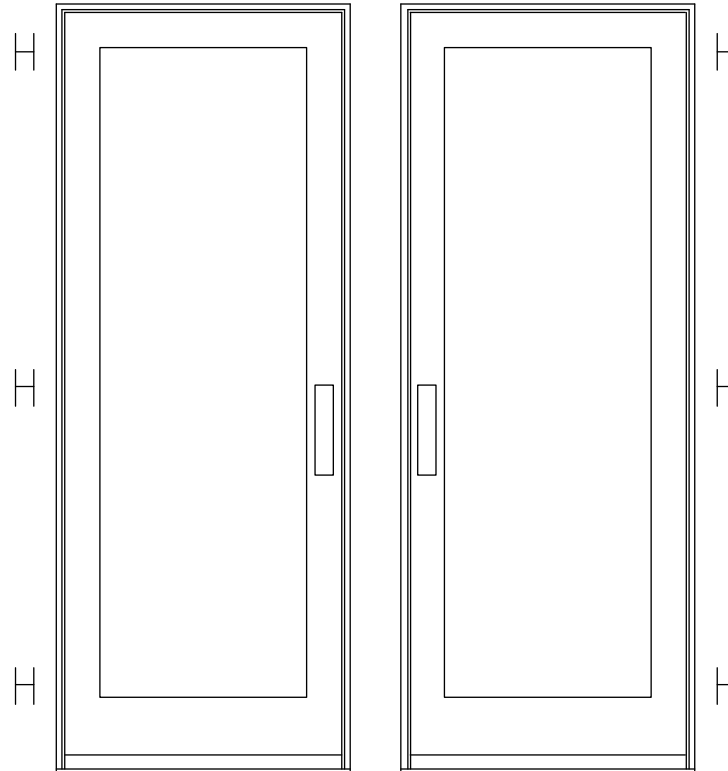
| Minimalist Handle |          |
|-------------------|----------|
| Color             | PN       |
| Brass Face        | 10148228 |
| Chrome Face       | 10833005 |



**NOTE: Always view units  
from the exterior for handing.  
H=Hinge location**



**LH Inswing**

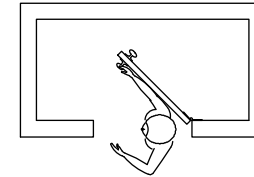


**X-LH Inswing**

This panel uses the  
left hand hinge

**X-RH Inswing**

This panel uses the  
right hand hinge



**RH Inswing**

## Adjustable Hinge Package, G2

NOTE: Packages may include extra screws that are not used in certain applications.

### Includes:

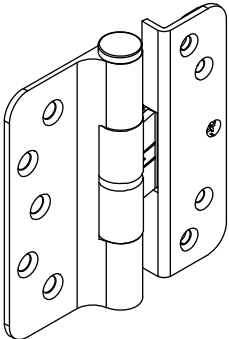
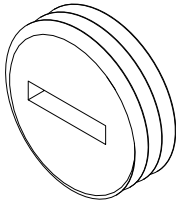
- 1 - Adjustable hinge
- 4 - #8 x 1 1/2" Phillips flat head wood screws (panel)
- 5 - #10-16 x 7/8" Phillips full thread, flat head screw (jamb)
- 5 - #10 x 1" Type A-17 full thread screw (jamb, stationary stile)
- 1 - #10-13 x 2 1/2" Type A/TF 2/3 thread screw package (jamb). Use 1 screw per hinge.

NOTE: Individual screws are available if needed.

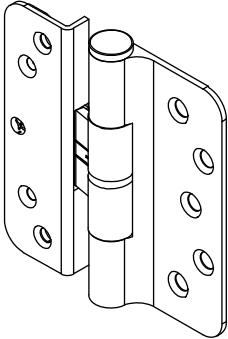
| Adjustable Hinge Package, G2 - Color and Part Number |          |          | Matching Screw Color |
|--|----------|----------|----------------------|
| Hinge Color  | LH PN    | RH PN    |                      |
| Satin Taupe (TP)                                     | 02101260 | 02101261 | TP                   |
| Goldtone (GT)  | 02101246 | 02101247 | GT                   |
| Silver Frost (SF)                                    | 02101262 | 02101263 | Stainless Steel      |
| Dark Bronze (DKBZ)                                   | 02101244 | 02101245 | DKBZ                 |
| Antique Brass (AB)                                   | 02101240 | 02101241 | DKBZ                 |
| White (WH)   | 02101266 | 02101267 | WH                   |
| Satin Chrome (SC)                                    | 02101256 | 02101257 | Stainless Steel      |
| Oil Rubbed Bronze (ORBZ)                             | 02101250 | 02101251 | DKBZ                 |
| Oil Rubbed Bronze PVD (ORBZ PVD)                     | 02101252 | 02101253 | DKBZ                 |
| Brass PVD (BS PVD)                                   | 02101242 | 02101243 | BS PVD               |
| Satin Nickel (SN) PVD                                | 02101258 | 02101259 | Stainless Steel      |
| Polished Chrome (PC)                                 | 02101254 | 02101255 | Stainless Steel      |
| Matte Black (MBK)                                    | 02101248 | 02101249 | MBK                  |

## Adjustment Cover, Adjustable Hinge

| PN       |
|----------|
| 11844039 |



LH Hinge



RH Hinge

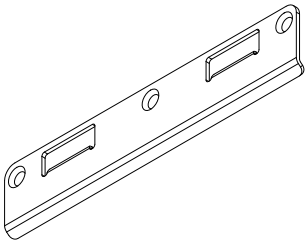
| Individual Screw Description  | Color and Part Number |          |          |          |          |                 |          |
|---|-----------------------|----------|----------|----------|----------|-----------------|----------|
|   | TP                    | GT       | WH       | DKBZ     | BS PVD   | Stainless Steel | MBK      |
| #8 x 1 1/2" Phillips flat head wood screw (panel). 4 per hinge.   | 11865177              | 11865172 | 11865173 | 02058013 | 11865176 | 11865175        | 11865178 |
| #10-16 x 7/8" Phillips flat head wood screw (jamb or stationary stile). 5 per hinge.  | 11800286              | 11800282 | 11800283 | 11800281 | 11800285 | 11800284        | 11800287 |
| #10-16 x 1" Type A-17 full thread screw   | 11800985              | 11800981 | 11800982 | 11800980 | 11800984 | 11800987        | 11800986 |
| #10-13 x 2 1/2" Type A/TF 2/3 thread screw package* (jamb). Use 1 screw per hinge. Part numbers for these screws are sold in packages of 4 screws and includes 1 - 5/32" Allen wrench. (Long Hinge Screw Package) | 11800653              | 11800632 | 11800637 | 11800644 | 10148185 | 11800639        | 11800696 |
| NOTE: To avoid damage, do not use on panels of Ultimate 3" Stile Doors.   |                       |          |          |          |          |                 |          |



## Frame Strike, Narrow, Multi-Point Lock

Used on 4 9/16" jambs

| Color                 | PN       |
|-----------------------|----------|
| Antique Brass         | 11844000 |
| Oil Rubbed Bronze PVD | 11844003 |
| Bright Brass PVD      | 11844001 |
| Stainless Steel       | 11844002 |



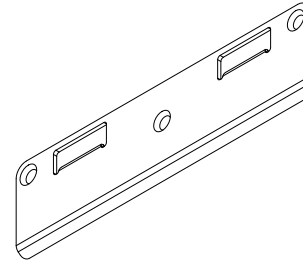
| Suggested Fasteners                          |          |
|--|----------|
| 3 - #10-16 x 7/8" full thread undercut screw |          |
| Color  | PN       |
| Dark Bronze                                  | 11800281 |
| Brass  | 11800285 |
| Stainless Steel                              | 11800284 |

NOTE: Dark Bronze screws are used on Antique Brass and Oil Rubbed Bronze PVD.

## Frame Strike, Wide, Multi-Point Lock

Used on 6 9/16" jambs

| Color                 | PN       |
|-----------------------|----------|
| Antique Brass         | 11844005 |
| Bright Brass PVD      | 11844006 |
| Stainless Steel       | 11844007 |
| Oil Rubbed Bronze PVD | 11844008 |



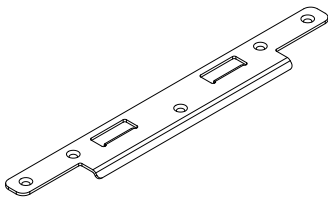
| Suggested Fasteners                          |          |
|--|----------|
| 3 - #10-16 x 7/8" full thread undercut screw |          |
| Color  | PN       |
| Dark Bronze                                  | 11800281 |
| Brass  | 11800285 |
| Stainless Steel                              | 11800284 |

NOTE: Dark Bronze screws are used on Antique Brass and Oil Rubbed Bronze PVD.

## Panel Strike, Narrow, Multi-Point Lock

Used on 1 3/4" Panels

| Color                 | PN       |
|-----------------------|----------|
| Antique Brass         | 11844009 |
| Bright Brass PVD      | 11844010 |
| Stainless Steel       | 11844011 |
| Oil Rubbed Bronze PVD | 11844012 |



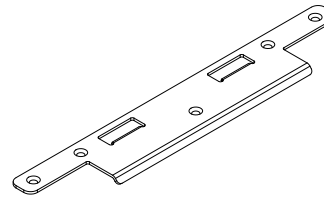
| Suggested Fasteners                           |          |
|---|----------|
| 5 - #8-18 x 5/8" Type A/AB, full thread screw |          |
| Color   | PN       |
| Dark Bronze                                   | 11800579 |
| Brass   | 11800580 |
| Stainless Steel                               | 11806154 |

NOTE: Dark Bronze screws are used on Antique Brass and Oil Rubbed Bronze PVD.

## Panel Strike, Wide, Multi-Point Lock

NOTE: Used on 2 1/4" Panels

| Color                 | PN       |
|-----------------------|----------|
| Antique Brass         | 11844015 |
| Bright Brass PVD      | 11844016 |
| Stainless Steel       | 11844017 |
| Oil Rubbed Bronze PVD | 11844018 |



| Suggested Fasteners                           |          |
|---|----------|
| 5 - #8-18 x 5/8" Type A/AB, full thread screw |          |
| Color   | PN       |
| Dark Bronze                                   | 11800579 |
| Brass   | 11800580 |
| Stainless Steel                               | 11806154 |

NOTE: Dark Bronze screws are used on Antique Brass and Oil Rubbed Bronze PVD.

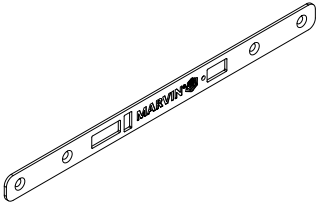
## Cover Plate, Active Multi-Point Lock

Used on 1 3/4" Panels

| Color                 | PN       |
|-----------------------|----------|
| Antique Brass         | 11841980 |
| Bright Brass PVD      | 11841981 |
| Stainless Steel       | 11841982 |
| Oil Rubbed Bronze PVD | 11841983 |

| Suggested Fasteners                           |          |
|---|----------|
| 4 - #8-18 x 5/8" Type A/AB, full thread screw |          |
| Color   | PN       |
| Dark Bronze                                   | 11800579 |
| Brass   | 11800580 |
| Stainless Steel                               | 11806154 |

NOTE: Dark Bronze screws are used on Antique Brass and Oil Rubbed Bronze PVD.



## Cover Plate, Active Multi-Point Lock, 2 1/4"

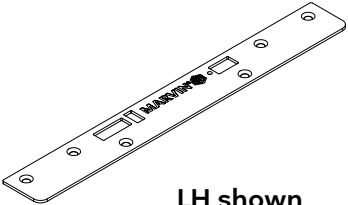
Used on 2 1/4" Panels

| LH Inswing uses RH PN<br>RH Inswing uses LH PN |          |          |
|--|----------|----------|
| Color  | LH PN    | RH PN    |
| Antique Brass                                  | 11844020 | 11844021 |
| Bright Brass PVD                               | 11844022 | 11844023 |
| Stainless Steel                                | 11844024 | 11844025 |
| Oil Rubbed Bronze PVD                          | 11844026 | 11844027 |

| Suggested Fasteners                           |          |
|---|----------|
| 4 - #8-18 x 5/8" Type A/AB, full thread screw |          |
| Color   | PN       |
| Dark Bronze                                   | 11800579 |
| Brass   | 11800580 |
| Stainless Steel                               | 11806154 |

| Suggested Fasteners                             |          |
|---|----------|
| 2 - #8-18 x 1 1/2" Type A/AB, full thread screw |          |
| Color   | PN       |
| Dark Bronze                                     | 02058013 |
| Brass   | 11865176 |
| Stainless Steel                                 | 11865175 |

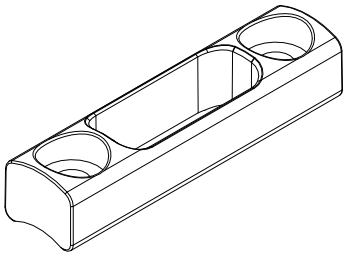
NOTE: Dark Bronze screws are used on Antique Brass and Oil Rubbed Bronze PVD.



LH shown

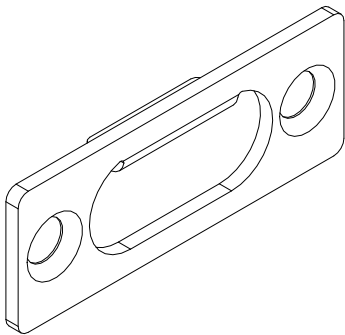
Sill Strike, Inswing

| Color | PN       | Suggested Fasteners                                |  |
|-------|----------|--|--|
| Ebony | 11869671 | 2 - #8-18 x 1/2" Torx, full thread, pan head screw |  |
| Color | PN       |  |  |
| Ebony | 11800224 |  |  |



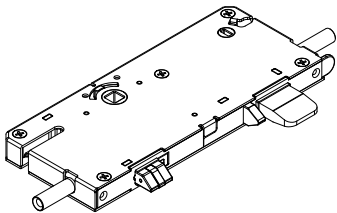
Strike Plate, Head Jamb

| PN       | Suggested Fasteners                        | PN       |
|----------|--|----------|
| 11869683 | 2 - #8-32 x 3/8" full thread machine screw | 02058014 |



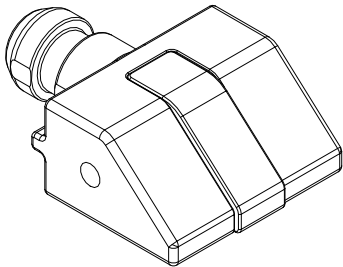
Gear Box (Multi-Point Lock), 60mm Active

| PN       |
|----------|
| 10501652 |



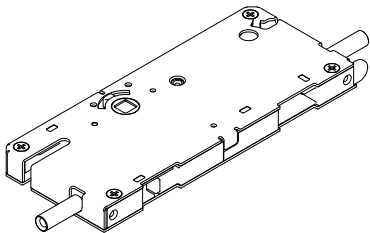
Latch Bolt

| PN       |
|----------|
| 10501929 |



Gear Box (Multi-Point Lock), 60mm Passive

| PN       |
|----------|
| 10501928 |



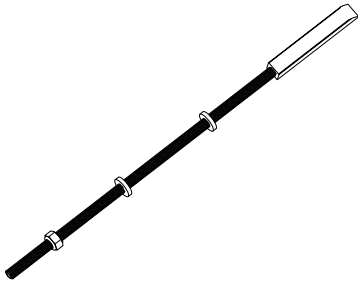
## Shoot Bolt Sub Assembly

NOTE: If a special rough opening height is needed for the Top Locking Rod, please order using the following specifications:

- 1. State “Top Locking Rod Assembly”.
- 2. Original order number/line number (if available)
- 3. Configuration
- 4. Rough opening

| Multi Point Top Rod    |           |          |
|------------------------|-----------|----------|
| CN                     | Length    | PN       |
| 6-6R                   | 36 35/64" | 05700210 |
| 6-8                    | 39 3/64"  | 05700211 |
| 7-0                    | 43 3/64"  | 05700212 |
| 8-0                    | 55 3/64"  | 05700213 |
| 9-0                    | 67 3/64"  | 05700214 |
| 10-0                   | 79 3/64"  | 05700215 |
| Multi Point Bottom Rod |           |          |
| -                      | 16 3/4"   | 11101742 |

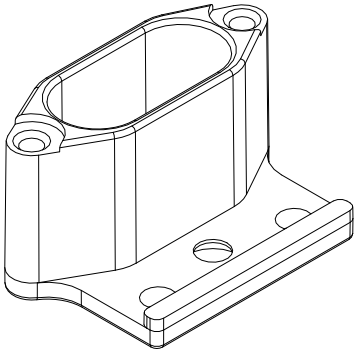
| Flush Bolt |          |
|------------|----------|
| 10 51/64"  | 11101740 |
| 33 27/64"  | 11101742 |
| 43 3/64"   | 05700212 |



## Shoot Bolt Retainer, Head Jamb

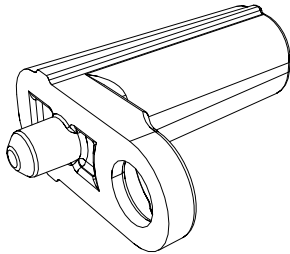
| Color | PN       |
|-------|----------|
| Black | 10501922 |

| Suggested Fasteners                           |          |
|---|----------|
| 1 - #8-18 x 5/8" Type A/AB, full thread screw |          |
| Color   | PN       |
| Stainless Steel                               | 11806154 |



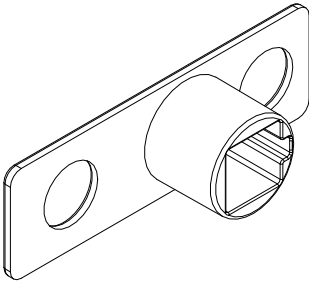
## Flush Bolt Adapter

| Color | PN       |
|-------|----------|
| Black | 10840269 |



## Shoot Bolt Sub Guide

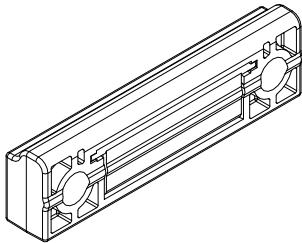
| PN       |
|----------|
| 11869674 |



## Sill Drain Assembly

| Color | PN       |
|-------|----------|
| Ebony | 10840264 |

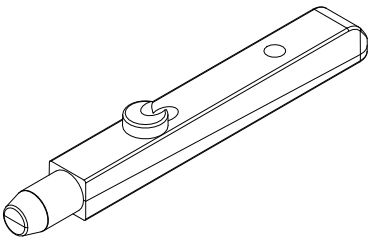
| Suggested Fasteners                                |          |
|--|----------|
| 2 - #8-18 x 1/2" Torx, full thread, pan head screw |          |
| Color  | PN       |
| Ebony  | 11800224 |



## Stationary Bolt, Stile

| Color | PN       |
|-------|----------|
| Black | 10899024 |

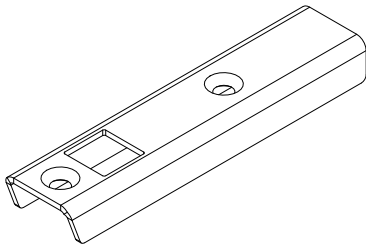
| Suggested Fasteners                                  |          |
|--|----------|
| 1 - #8-15 x 3" Type A/TF, Phillips, 2/3 thread screw |          |
| Color  | PN       |
| Matte Black  | 11800918 |



## Stile End Bracket

| Length | PN       |
|--------|----------|
| 4 3/4" | 10502072 |

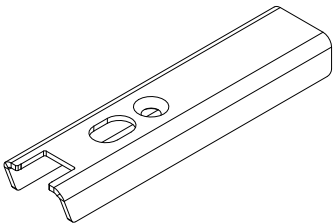
| Suggested Fasteners                                      |          |
|--|----------|
| 2 - #8-18 x 1 1/4" Type A/TEK2, Phillips flat head screw |          |
| Color  | PN       |
| Stainless Steel  | 11801806 |



## Stationary Bracket Reinforcement

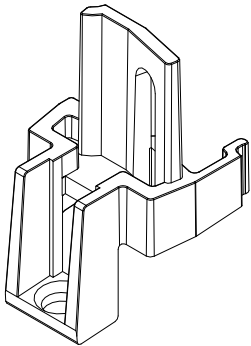
| Length | PN       |
|--------|----------|
| 4 3/4" | 10502071 |

| Suggested Fasteners                                      |          |
|--|----------|
| 1 - #8-18 x 1 1/4" Type A/TEK2, Phillips flat head screw |          |
| Color  | PN       |
| Stainless Steel  | 11801806 |



## Mull Post, Sill Reinforcement

| LH PN    | RH PN    |
|----------|----------|
| 10899019 | 10899020 |



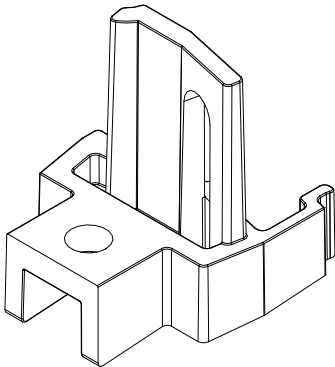
LH shown

| Suggested Fasteners                             |          |
|---|----------|
| 1 - #8 x 1 1/4" Type A, Phillips pan head screw |          |
| Color   | PN       |
| Stainless Steel                                 | 11800806 |

| Suggested Fasteners   |          |
|---|----------|
| 1 - #8-16 x 3/8" Type AB, Phillips pan head screw (into sill) |          |
| Color   | PN       |
| Stainless Steel   | 11800222 |

## Mull Post, Header Reinforcement

| LH PN    | RH PN    |
|----------|----------|
| 10899021 | 10899022 |



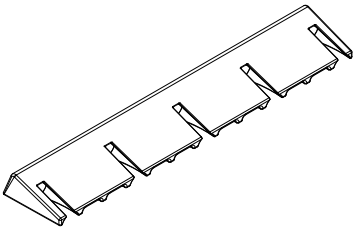
RH shown

| Suggested Fasteners                             |          |
|---|----------|
| 1 - #8 x 1 1/4" Type A, Phillips pan head screw |          |
| Color   | PN       |
| Stainless Steel                                 | 11800806 |

| Suggested Fasteners   |          |
|---|----------|
| 1 - #8-18 x 1 7/8" Type AB, Phillips pan head screw (into header) |          |
| Color   | PN       |
| Stainless Steel   | 02058017 |

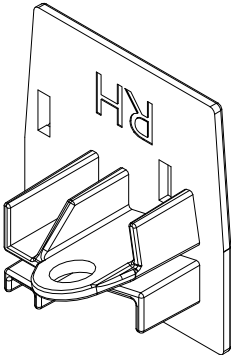
## Sill Reinforcement

| PN       |
|----------|
| 10899023 |



## Astragal End Cap

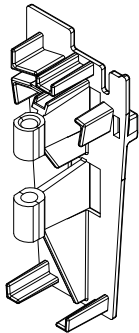
| Color | LH PN    | RH PN    |
|-------|----------|----------|
| Black | 11869941 | 11869940 |



RH shown

## Astragal End Cap, IZ3

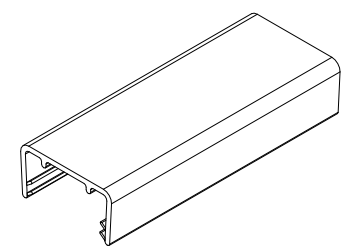
| Color | LH PN    | RH PN    |
|-------|----------|----------|
| Black | 10840271 | 10840270 |



RH shown

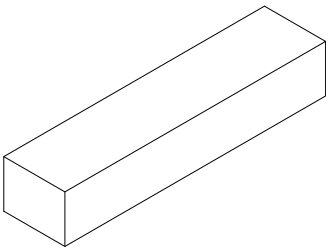
Stile End Filler

| Length | PN       |
|--------|----------|
| 3.938" | 16220003 |



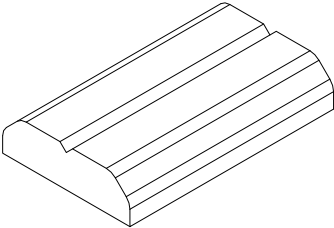
Mull Base Foam Pad

| Color | PN       |
|-------|----------|
| Black | 10501025 |



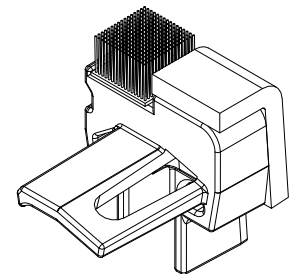
Frame Spacer

| PN       |
|----------|
| 16220009 |



## Mull Post Accessibility, Sill Reinforcement

| LH PN    | RH PN    |
|----------|----------|
| 11869939 | 11869938 |



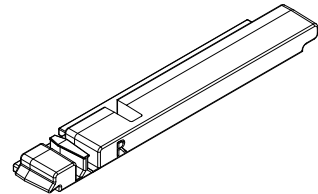
LH shown

| Suggested Fasteners                             |          |
|---|----------|
| 1 - #8 x 1 1/4" Type A, Phillips pan head screw |          |
| Color   | PN       |
| Stainless Steel                                 | 11800806 |

| Suggested Fasteners  |          |
|--|----------|
| 1 - #8-16 x 3/8" TRHF, Phillips, flat head screw (into sill) |          |
| Color  | PN       |
| Stainless Steel  | 11800222 |

## Stile End Plug, 4 3/4", Accessibility Sill

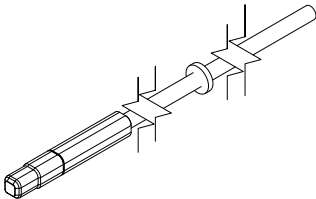
| LH PN    | RH PN    |
|----------|----------|
| 11869946 | 11869947 |



RH shown

## Shoot Bolt Sub Assembly, Accessibility Sill

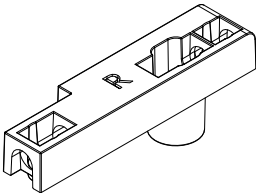
| Description        | Length          | PN       |
|--------------------|-----------------|----------|
| Flush Bolt         | 8 25/32" (223)  | 10501948 |
| Bottom Multi-Point | 33 13/32" (849) | 10501995 |



## Shoot Bolt Guide, OXXO, Accessibility Sill

| Color | LH PN    | RH PN    |
|-------|----------|----------|
| Black | 10501998 | 10501997 |

| Suggested Fasteners                                     |          |
|---|----------|
| 2 - #8-18 x 1 1/4" , Type AB, Phillips, flat head screw |          |
| Color   | PN       |
| Stainless Steel   | 11808118 |

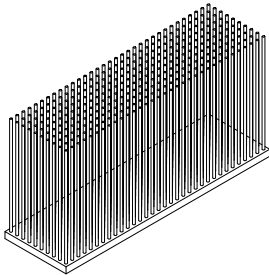


RH shown



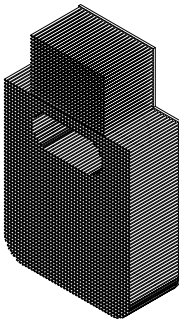
Sill Key Fuzzy, Accessibility Sill

| PN       |
|----------|
| 10501143 |



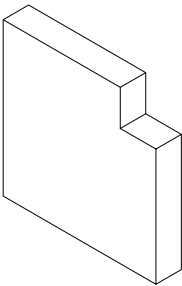
Dust Block, OXXO, Accessibility Sill

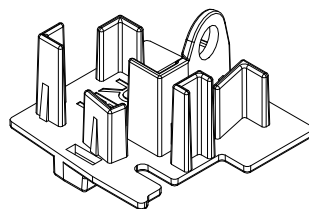
| PN       |
|----------|
| 10500398 |



Sill Gasket, Accessibility Sill

| PN       |
|----------|
| 05700009 |





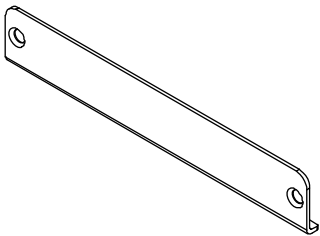
**RH shown**

**Astragal End Cap**

No longer available, replace with current.

# Cover, Transmitter, L-Shape

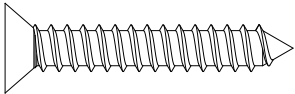
| Color                   | PN       |
|-------------------------|----------|
| Brushed Stainless Steel | 10501821 |



# #8-18 x 1" Type AB, Full Thread

Used for Transmitter Cover  
Need quantity of 2 for each part

| PN       |
|----------|
| 11800769 |

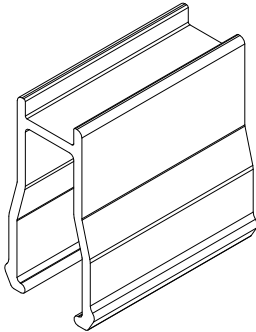


# Stationary Block, Interior Sill

A3757

| Length       | Panel Width        | PN       |
|--------------|--------------------|----------|
| 5 1/2" (140) | Under 18 1/2"      | 18903807 |
| 9" (230)     | 18 1/2" and larger | 18903806 |

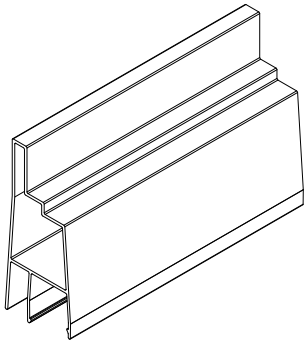
| Suggested Fasteners                                  |          |
|--|----------|
| 3-6 - #8-18 x 1/2" Torx, full thread, pan head screw |          |
| Color  | PN       |
| Ebony  | 11800224 |
| Bronze   | 11800223 |



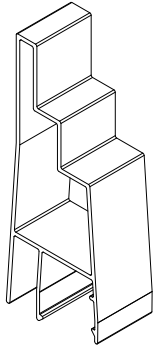
# Aluminum Parts

## Ordering specifications (use all that apply):

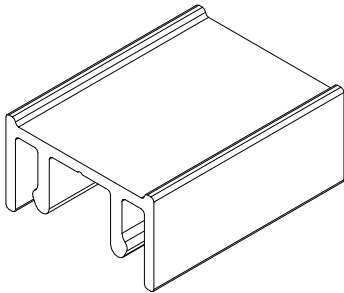
1. Original order number/line number (if available)
2. Call number or rough opening
3. Profile
4. Length
5. Handing
6. Color/finish



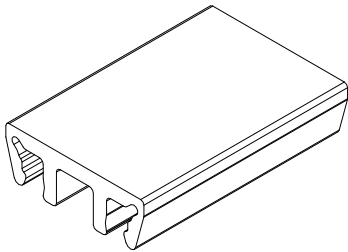
**A3644**  
Screen Mull Casing 4 9/16"



**A04125**  
Screen Mull Casing 6 9/16"



**A3646, Mull Casing Screen Extension**  
NOTE: Used on 6 9/16" Jambs



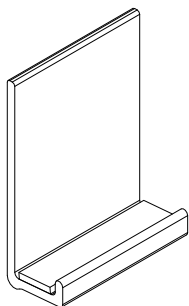
**A3490, Mull Cap, Mull Casing Screen Extension**  
NOTE: Used on 6 9/16" Jambs

| Suggested Fasteners                          | Quantity  | PN       |
|--|-----------|----------|
| #8-18 x 7/16" TEK 2, Phillips pan head screw | Bag of 10 | 11800178 |

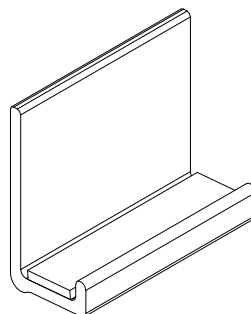
## Aluminum Parts

### Ordering specifications (use all that apply):

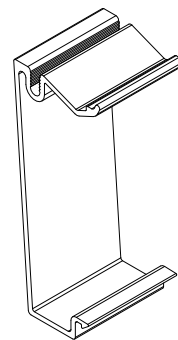
1. Original order number/line number (if available)
2. Call number or rough opening
3. Profile
4. Length
5. Handing
6. Color/finish



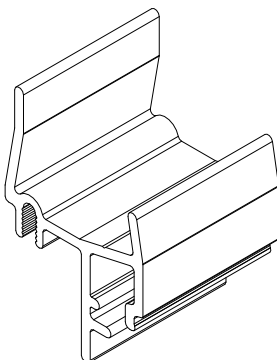
**A3727**  
**Sill Liner**



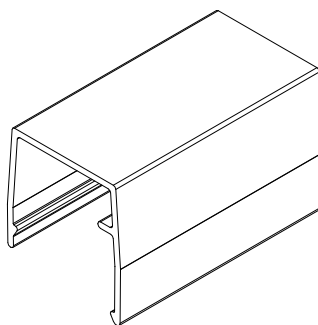
**A03955**  
**Sill Liner, Accessibility Sill**



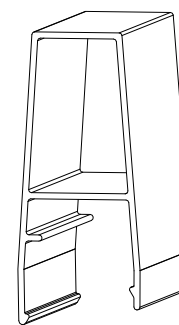
**A3637**  
**Parting Stop**



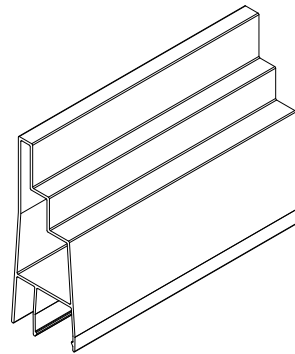
**A3633**  
**Mull Base**



**A3634**  
**Astragal Cover**



**A3635**  
**Mull Post**

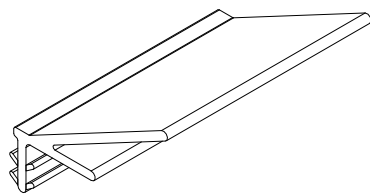


**A3645**  
**Screen Mull Casing 6 9/16"**  
No longer available

## Vinyl Parts

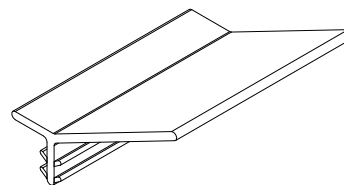
### Ordering specifications (use all that apply):

1. Original order number/line number (if available);
2. profile;
3. length;
4. handing;
5. color



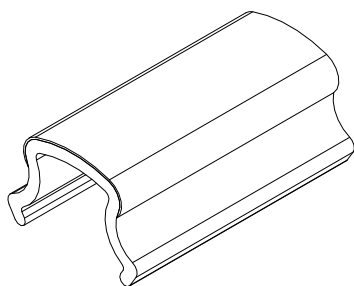
**V3122**  
**Sash Retainer, Inswing, 4 9/16"**

NOTE: Used on Transom

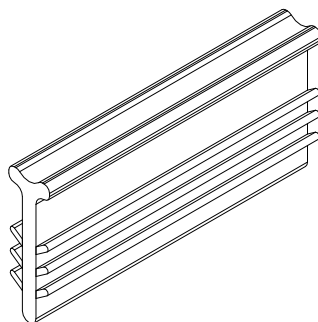


**V3141**  
**Sash Retainer, Inswing, 6 9/16"**

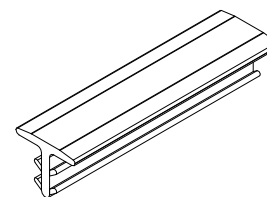
NOTE: Used on Transom



**V3120**  
**Interior Sill Filler**



**V2421**  
**Wedge Frame Spacer**  
NOTE: Used as kerf filler on  
operator hinge stiles and  
active lock stiles.

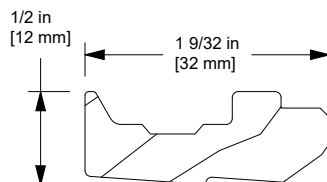


**V03427**  
**Kerf Filler, Accessibility Sill**

## Wood Parts

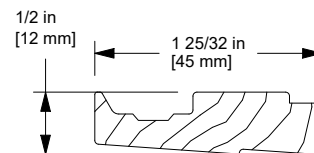
### Ordering specifications (use all that apply):

1. Original order number/line number (if available)
2. Profile
3. Length
4. Handing
5. Color



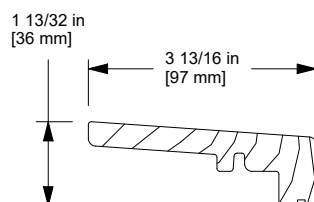
**W13565**  
**Sill Filler, 1 3/4"**

NOTE: Used on Transom



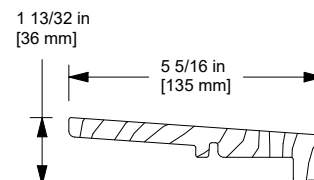
**W13628**  
**Sill Filler, 1 1/4" IG**

NOTE: Used on Transom



**W13760**  
**Inswing Sill Cover, 4 9/16" Jamb**  
**O, X, XX**

(Field applied option - Mahogany)



**W13761**  
**Inswing Sill Cover, 6 9/16" Jamb**  
**O, X, XX**

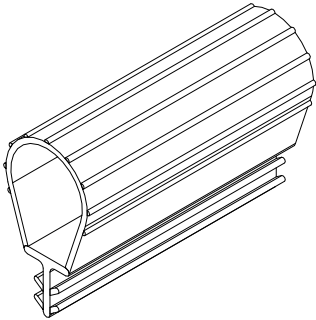
(Field applied option - Mahogany)



# Frame Weather Strip

V3200

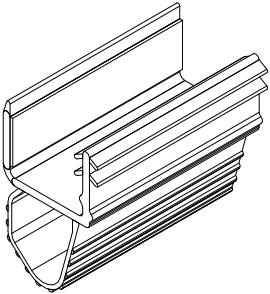
| Color | Length              | PN       |
|-------|---------------------|----------|
| Black | Specify length (LF) | 16220010 |



# Bottom Rail Weather Strip, Interior Panel, Accessibility Sill

V03406

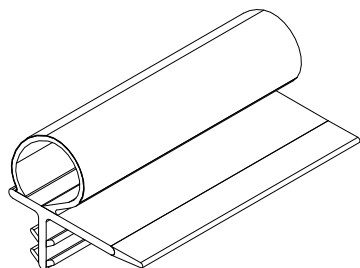
| Length          | PN       |
|-----------------|----------|
| 36 9/16" (929)  | 16225530 |
| 61 9/32" (1557) | 16225450 |



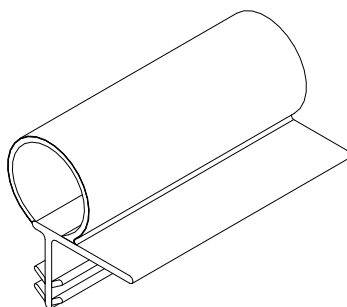
## Weather Strip Parts

### Ordering specifications (use all that apply):

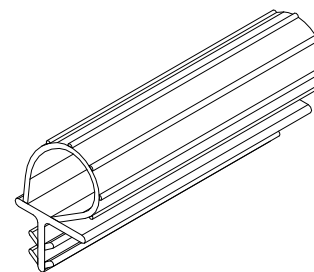
1. Original order number/line number (if available);
2. profile;
3. length;
4. handing;
5. color.



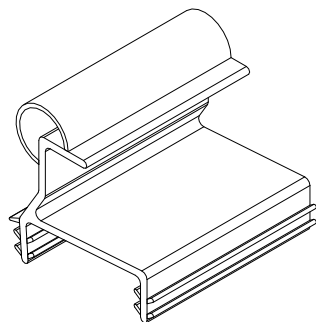
**V3208**  
**Astragal Base Weather Strip**



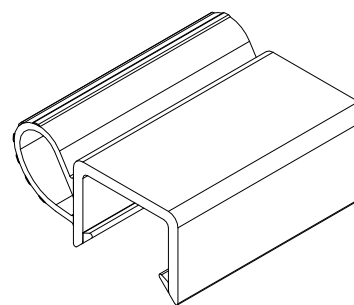
**V3173**  
**Astragal Panel Weather Strip**



**V3239**  
**Secondary Sill Weather Strip,  
Inswing**

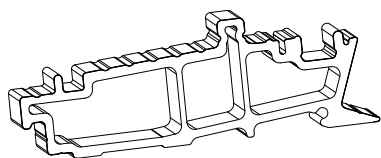


**V3121**  
**Sill Weather Strip,  
Inswing Transom**

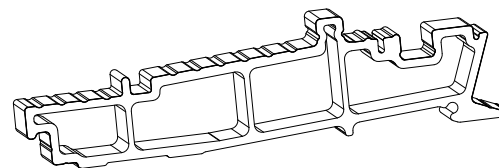


**V2026**  
**Sill Weather Strip**

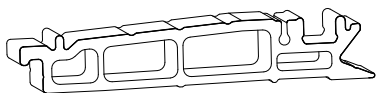
Refer to Configured Parts in OMS for sill replacement.



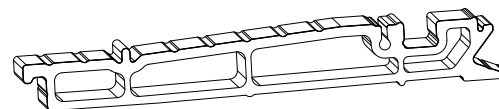
**Performance Sill - 4 9/16"**  
F2055



**Performance Sill - 6 9/16"**  
F2056



**Accessibility Sill - 4 9/16"**  
F2057

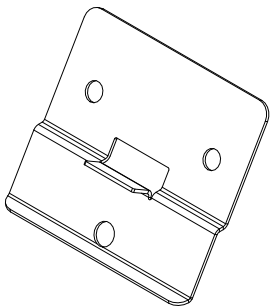


**Accessibility Sill - 6 9/16"**  
F2058

Refer to Configured Parts in OMS for full screen replacement.  
Individual screen replacement parts are available in the Ultimate Screens G2 (Door Screens) section.

## Replacement Panel Bracket Kits, Inswing

| Description | Description  | PN       |
|-------------|--|----------|
| 5 Piece Kit | 5 - Field service brackets, Inswing<br>10 - #8-18x1 1/2" Type A/AB, full thread screw<br>5 - #10-12 x 3", 2/3 thread screw<br>1 - UOFD UIFD Stationary Panel Service Instruction | 11102261 |
| 7 Piece Kit | 7 - Field service brackets, Inswing<br>14 - #8-18x1 1/2" Type A/AB, full thread screw<br>7 - #10-12 x 3", 2/3 thread screw<br>1 - UOFD UIFD Stationary Panel Service Instruction | 11102262 |



## Drill Jig, Interior Panel, Service Bracket

| PN       |
|----------|
| 11101738 |

