



Ultimate Outswing French Door Arch Top

Contents

Replacement Parts

Specifications and technical data are subject to change without notice.

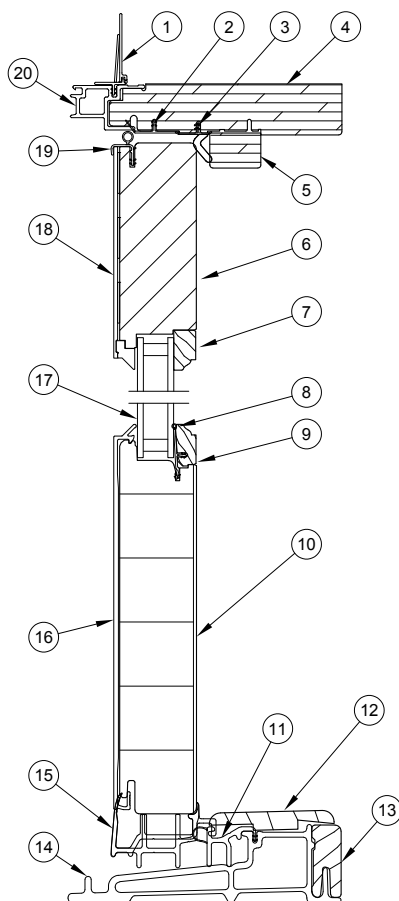
Numbers listed in () parentheses are metric equivalents in millimeters rounded to the nearest whole number.

Suggested fasteners are not included and must be ordered separately.

Illustrations are not to scale.

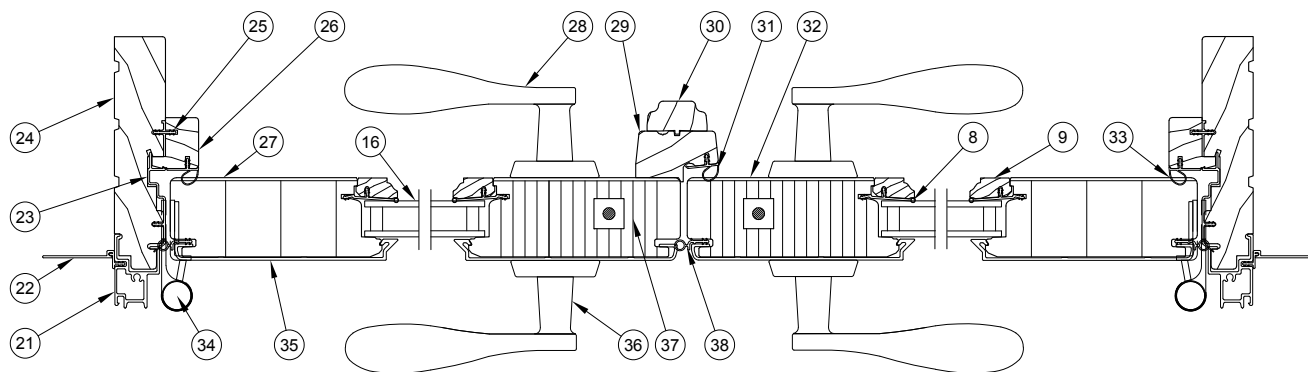
Product History.....	2
Part Identification - Operator XX.....	3
Installation Parts.....	4
Traditional Handle.....	5
Contemporary Handle	11
Handle - Keyed Cylinder.....	16
Handle Set - Discontinued No Availability (NA).....	17
Hinge Hanging Location	18
Hinges.....	19
Hinges - Discontinued No Availability (NA).....	21
Locking Hardware	22
Lock Status Sensor Parts.....	26
Miscellaneous Parts	27
Miscellaneous Parts - Discontinued No Availability (NA).....	28
Aluminum Parts	33
Fiberglass Parts.....	34
Vinyl Parts.....	35
Wood Parts.....	37
Weather Strip	38
Weather Strip - Discontinued No Availability (NA)	40
Panel Replacement	41
Wood Parts - Combination Door.....	42
Vinyl Parts - Combination Door	43
Combination Door Parts - Discontinued Limited Availability (LA)	44
Combination Door Parts - Discontinued No Availability (NA).....	47

Produced	Unit Type	Features and Changes
2003	Ultimate Outswing French Door Arch Top	07/2003: Ultimate French Door Arch Top introduced. Change in Rough Opening radius for one panel doors to 40 1/2" and for two panel doors to 72 1/2". Added radius SDL.
2004	Ultimate Outswing French Door Arch Top	1/2004: Added Oil Rubbed Bronze and Satin Chrome to available hardware finishes. 4/12/2004: Satin Nickel hardware finish introduced. Polished chrome finish hardware is retired.
2005	Ultimate Outswing French Door Arch Top	Arch Top Doors become Ultimate Arch Top Doors. Inswing sills upgraded for water infiltration introduced optional bronze Ultrex sill with black weather-strip. 6/15/2005: Changed jamb leaf on adjustable hinge to closed knuckle design. 6/27/2005 Introduced Brass PVD and Satin Nickel PVD finishes to French door handles, adjustable hinges, and other miscellaneous parts.
2007	Ultimate Outswing French Door Arch Top	2/20/2007: Introduced raised and flat panels as a standard option for Marvin French Doors and Commercial Doors. Introduced new Ultimate Swinging Screen along with an optional Storm Plus Insert.
2009	Ultimate Outswing French Door Arch Top	3/23/2009: Added LoE3-366 as a standard option for all products. Added Cedro Macho as a standard option for all clad products.
2011	Ultimate Outswing French Door Arch Top	04/25/2011: Added LoE-180 as a standard option for all products. White painted interior finish option introduced for all products.
2012	Ultimate Outswing French Door Arch Top	7/30/2012: Stave Core added to our description for current finger joint/edge glue construction of door panels. Updated adjustable hinge. 10/29/2012: Interior Square Sticking/Glazing Bead option introduced. 12/17/2012: Introduced Clear Interior Finish option on all products.
2013	Ultimate Outswing French Door Arch Top	4/29/2013: Introduced interior stain options. Stain colors are Wheat, Honey, Leather, Hazelnut, Cabernet and Espresso. 12/16/2013: Added SN PVD Butt Hinge option.
2014	Ultimate Outswing French Door Arch Top	2/24/2014: Introduced two Pearlescent clad colors – Bright Silver and Copper. Discontinued two clad colors – Sherwood Green and Cobalt Blue. Removed screen information and added new chapter for screen to manual. 10/27/2014: Introduced Ogee as the new default for interior profiles.
2016	Ultimate Outswing French Door Arch Top	06/27/2016: Introduced Matte Black as a standard hardware color 10/31/2016: Introduced 9-0 Call No heights 10/31/2016: Obsolescence of the wood species Cedro Macho for all products.
2017	Ultimate Outswing French Door Arch Top	12/18/2017: Added availability of Lock Status Sensor.



Head Jamb and Sill

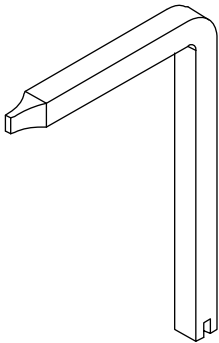
- | | |
|------------------------------------|-----------------------------------|
| 1. Head Jamb Nailing Fin/Drip Cap | 20. Head Jamb Cladding |
| 2. Frame Weather Strip, | 21. Side Jamb Cladding |
| 3. Head Jamb Weather Strip | 22. Side Jamb Nailing Fin |
| 4. Jamb | 23. Frame Weatherstrip, V017 |
| 5. Head Jamb Parting Stop, W8598 | 24. Jamb |
| 6. Top Rail | 25. Connecting Barb, V803 |
| 7. Top Rail Glazing Bead | 26. Side Jamb Parting Stop, W6531 |
| 8. Vinyl Glazing Bead | 27. Stile |
| 9. Glazing Bead Cap | 28. Interior Handle Assembly |
| 10. Bottom Rail | 29. Astragal Base, W1455 |
| 11. Sill Weather Strip, V776 | 30. Astragal Cover, W7554 |
| 12. Sill Cover, W9510 | 31. Astragal Weatherstrip, V796 |
| 13. Sill Liner, W2528 | 32. Active Panel Locking Stile |
| 14. Sill | 33. Jamb Stop Weatherstrip, V796 |
| 15. Sweep, V2428 | 34. Adjustable Hinge |
| 16. Bottom Rail Cladding | 35. Stile Cladding |
| 17. Insulating Glass | 36. Exterior Handle Assembly |
| 18. Top Rail Cladding | 37. Inactive Panel Locking Stile |
| 19. Panel Cover Weatherstrip, V018 | 38. Stile Weatherstrip, V020 |



Jamb - XX L

Construction Handle

PN
10830451



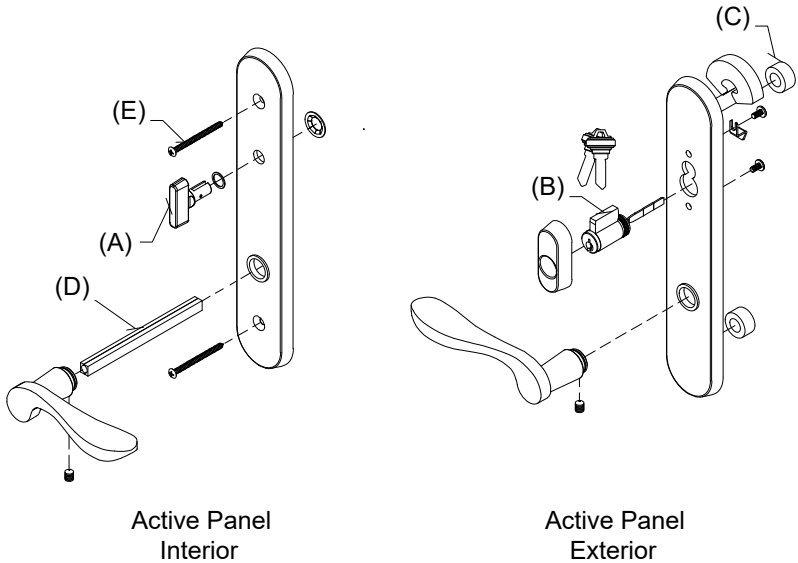
Handle Assembly, Active, Keyed

Mortise Lock and Multi-Point Lock Systems (Schlage “C” Keyway)

Includes:

- 1 - Interior lever with spindle, escutcheon plate and hardware
- 1 - Exterior lever with escutcheon plate and hardware
- 1 - Thumb turn with hardware (A)
- 1 - Keyed cylinder with housing and hardware, includes 2 keys (B)
- 1 - Exterior escutcheon plate gasket
- 2 - Lug Seal (C)
- 1 - Two piece spindle, 4.35” w/1 3/4” panel (D)
- 2 - #10–32 x 2 1/8” Phillips oval head machine screws (w/1 3/4” Panel) (E)

Handle Assembly - 1 3/4 Panel	
Color	PN
Satin Taupe	10830304
Antique Brass	10830306
White	10830310
Satin Chrome	10830302
Oil Rubbed Bronze	10148111
Oil Rubbed Bronze PVD	10830300
Brass PVD	10830324
Satin Nickel PVD	10830421
Dark Bronze	10830330
Polished Chrome	10830308
Matte Black	10830450



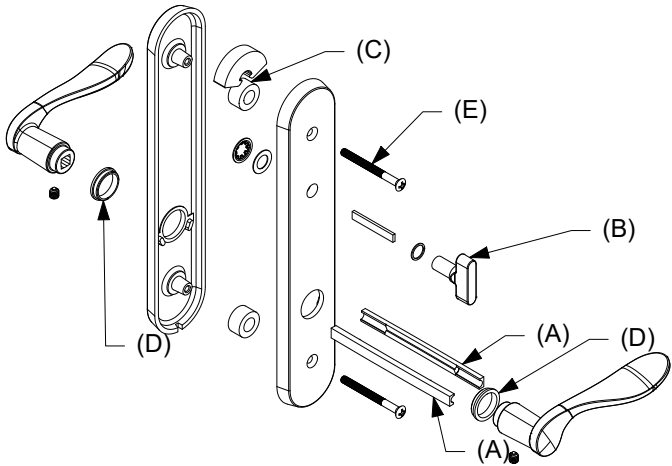
Handle Assembly, Active, Non-Keyed

Mortise Lock and Multi-Point Lock Systems (Schlage “C” Keyway)

Includes:

- 2 - Levers
- 2 - Lever bushings (D)
- 2 - Lug seals (C)
- 1 - Interior escutcheon
- 1 - Exterior escutcheon
- 1 - Thumb turn with actuator/tail piece (B)
- 1 - Two piece spindle, 4.35” w/1 3/4” panel (A)
- 2 - #10–32 x 2 1/8” Phillips oval head machine screws (w/1 3/4” Panel) (E)
- 2 - Set screws
- 1 - Allen wrench
- 1 - Installation instruction

Handle Assembly - 1 3/4 Panel	
Color	PN
Satin Taupe	10830514
Antique Brass	10830520
White	10830516
Satin Chrome	10830513
Oil Rubbed Bronze	10830512
Oil Rubbed Bronze PVD	10830510
Brass PVD	10830517
Satin Nickel PVD	10830521
Dark Bronze	10830518
Polished Chrome	10830515
Matte Black	10830519

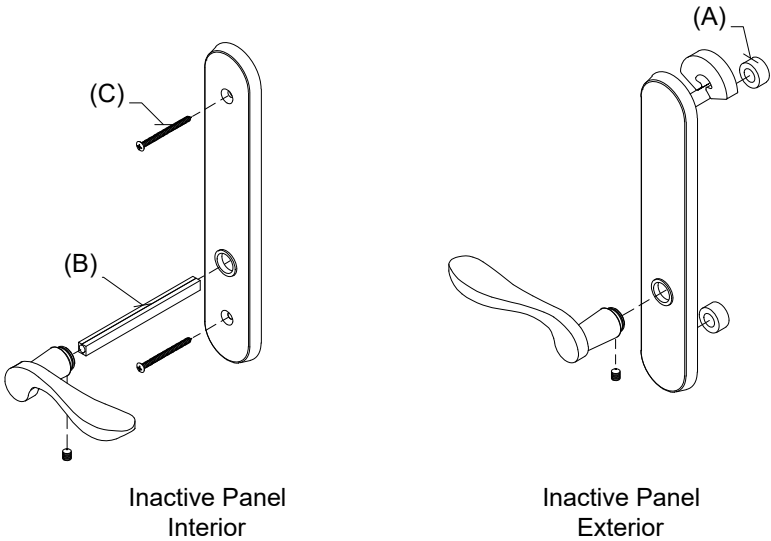


Handle Assembly, Inactive/Dummy

Includes:

- 1 - Interior lever with spindle, escutcheon plate and hardware
- 1 - Exterior lever with escutcheon plate and hardware
- 1 - Exterior escutcheon plate gasket
- 1 - Exterior escutcheon plate
- 2 - Lug seals (A)
- 1 - Two piece spindle, 4.35" (w/1 3/4" panel) (B)
- 2 - #10-32 x 2 1/8" Phillips oval head machine screws (w/1 3/4" Panel) (C)

Handle Assembly - 1 3/4 Panel	
Color	PN
Satin Taupe	10830318
Antique Brass	10830312
White	10830316
Satin Chrome	10830320
Oil Rubbed Bronze	10148154
Oil Rubbed Bronze PVD	10830322
Brass PVD	10830326
Satin Nickel PVD	10830422
Dark Bronze	10830328
Polished Chrome	10830314
Matte Black	10148157



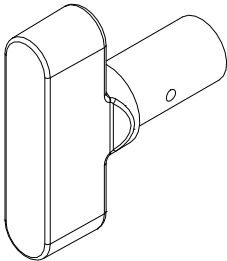
Thumb Turn, Traditional

For Keyed Handle

Includes:

- Thumb Turn Washer
- Thumb Turn Push Nut

No Tail Piece/Actuator (for keyed handle)	
Color	PN
Antique Brass	10148483
Satin Chrome	10148482
Oil Rubbed Bronze	10148481
Oil Rubbed Bronze PVD	10148485
Polished Chrome	10148488
Brass PVD	10148484
Satin Nickel PVD	10148487
Satin Taupe	10148486
Dark Bronze	10148479
White	10148489
Matte Black	10148480



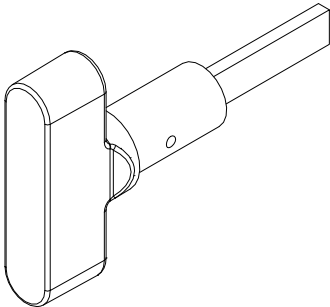
Thumb Turn, Traditional with Actuator/Tail Piece

For Non-Keyed Handle

Includes:

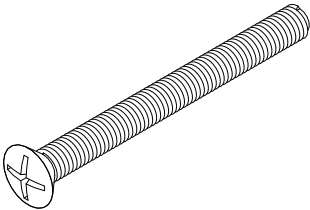
- Actuator/Tailpiece
- Thumb Turn Washer
- Thumb Turn Push Nut

With Tail Piece/Actuator (for non-keyed handle)	
Color	PN
Antique Brass	10148495
Satin Chrome	10148494
Oil Rubbed Bronze	10148493
Oil Rubbed Bronze PVD	10148497
Polished Chrome	10148500
Brass PVD	10148496
Satin Nickel PVD	10148499
Satin Taupe	10148498
Dark Bronze	10148491
White	10148501
Matte Black	10148492



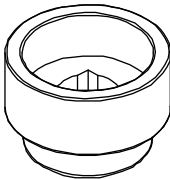
#10–32 x 2 1/8” Phillips Oval Head Machine Screw

Color	PN
Satin Taupe	11800616
Antique Brass	00143038
White	00143036
Satin Chrome	10840031
Oil Rubbed Bronze	10840032
Oil Rubbed Bronze PVD	11800160
Brass PVD	11800615
Satin Nickel PVD	11800190
Dark Bronze	11800654
Matte Black	11800181



Handle Extensions

3/4” Handle Extension (Requires 3/4” Spindle Extension)		3/8” Handle Extension (Requires 3/8” Spindle Extension)	
Color	PN	Color	PN
Satin Taupe	10833060	Satin Taupe	10833049
Antique Brass	10833057	Antique Brass	10833046
White	10833063	White	10833052
Satin Chrome	10833056	Satin Chrome	10833045
Oil Rubbed Bronze	10833038	Oil Rubbed Bronze	10833044
Oil Rubbed Bronze PVD	10833059	Oil Rubbed Bronze PVD	10833048
Brass PVD	10833058	Brass PVD	10833047
Satin Nickel PVD	10830139	Satin Nickel PVD	10833050
Dark Bronze	10833054	Dark Bronze	10833042
Polished Chrome	10833062	Polished Chrome	10833051
Matte Black	10833055	Matte Black	10833043



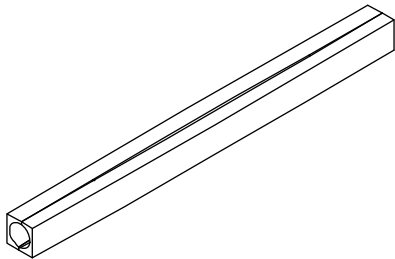
Spindle (Ashland and Truth)

Includes:

- 1 - 2 piece spindle
- 2 - Set screws

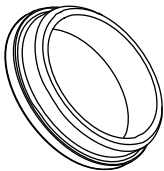
NOTE: The 5 1/16" spindle is primarily used for 1 3/4" doors with the 3/4" lever extension.

Size	PN
4 3/8"	18900392
5 1/16"	18900393



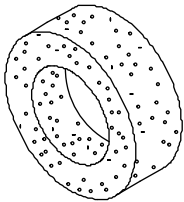
Lever Bushing, Swinging Handle Set, Traditional

Color	PN
Clear	02062201
Gray	10148448
Gold	10148447
Natural	02062202
Black	10148020



Lug Seal

PN
00142046

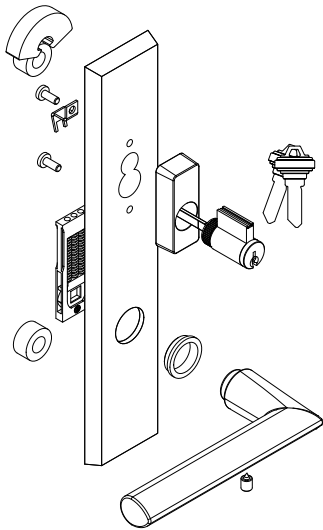


Contemporary Handle, Exterior, Active, Keyed

Includes:

- 1 - Handle
- 1 - Exterior escutcheon with bushing
- 1 - Keyed cylinder, includes 2 keys
- 2 - Lug seals
- 1 - Spring cartridge
- 1 - Set screw
- 1 - Installation instruction
- 1 - Hex wrench

LH Outswing Panel uses RH PN RH Outswing Panel uses LH PN		
Color	LH PN	RH PN
Matte Black	11870120	11870112
Satin Nickel PVD	11870122	11870114
Oil Rubbed Bronze PVD	11870124	11870116
Dark Bronze	11870126	11870118



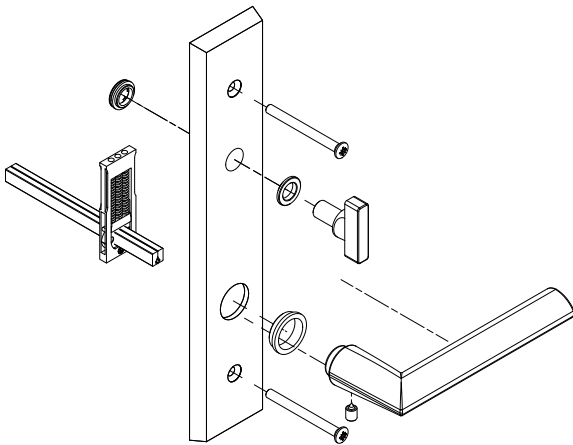
LH shown

Contemporary Handle, Interior, Active, Keyed

Includes:

- 1 - Handle
- 1 - Interior escutcheon with bushings
- 1 - Spring cartridge
- 1 - Thumb turn
- 2 - Machine screws, 2 1/4" Doors
- 2 - Machine screws, 1 3/4" Doors
- 1 - Split spindle, 2 1/4" Doors
- 1 - Split spindle, 1 3/4" Doors
- 1 - Set screw
- 1 - Installation instruction
- 1 - Hex wrench

LH Outswing Panel uses LH PN RH Outswing Panel uses RH PN		
Color	LH PN	RH PN
Matte Black	11870104	11870097
Satin Nickel PVD	11870106	11870098
Oil Rubbed Bronze PVD	11870108	11870100
Dark Bronze	11870110	11870102



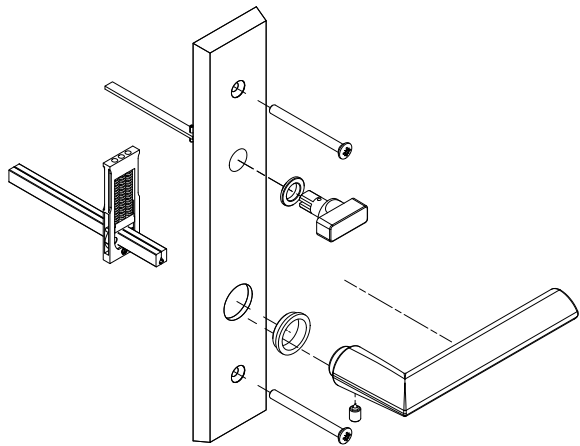
RH shown

Contemporary Handle, Interior, Active, Non-Keyed

Includes:

- 1 - Handle
- 1 - Interior escutcheon with bushings
- 1 - Spring cartridge
- 1 - Thumb turn
- 2 - Machine screws, 2 1/4" Doors
- 2 - Machine screws, 1 3/4" Doors
- 1 - Split spindle, 2 1/4" Doors
- 1 - Split spindle, 1 3/4" Doors
- 1 - Set screw
- 1 - Installation instruction
- 1 - Hex wrench

LH Outswing Panel uses LH PN RH Outswing Panel uses RH PN		
Color	LH PN	RH PN
Matte Black	11870136	11870128
Satin Nickel PVD	11870138	11870130
Oil Rubbed Bronze PVD	11870139	11870132
Dark Bronze	11870143	11870133



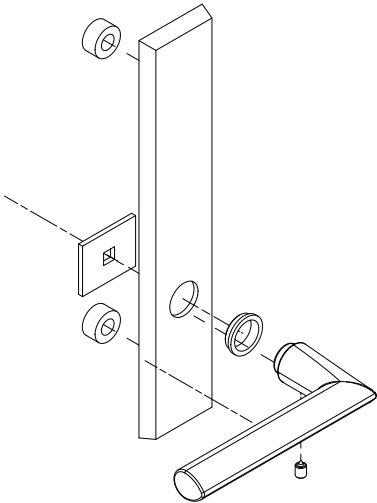
RH shown

Contemporary Handle, Exterior, Non-Keyed, Inactive/Dummy

Includes:

- 1 - Handle
- 1 - Exterior escutcheon with bushings
- 2 - Lug seals
- 1 - Fixing plate
- 1 - Set screw
- 1 - Installation instruction
- 1 - Hex wrench

LH Outswing Panel uses RH PN RH Outswing Panel uses LH PN		
Color	LH PN	RH PN
Matte Black	11870153	11870145
Satin Nickel PVD	11870154	11870146
Oil Rubbed Bronze PVD	11870156	11870148
Dark Bronze	11870158	11870149



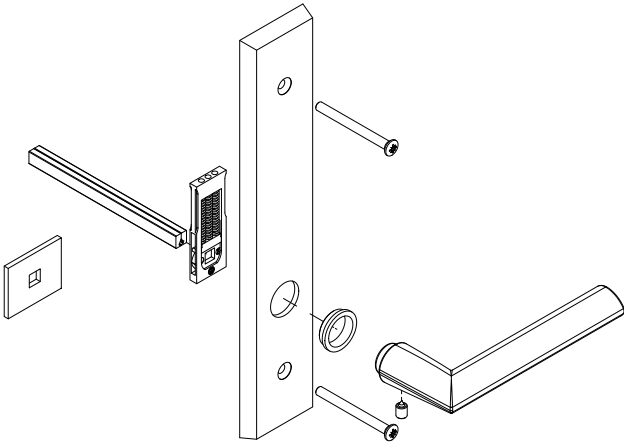
LH shown

Contemporary Handle, Interior, Inactive/Dummy

Includes:

- 1 - Handle
- 1 - Escutcheon with bushing
- 1 - Dummy fixing plate
- 1 - Spring cartridge
- 2 - Machine screws, 2 1/4" Doors
- 2 - Machine screws, 1 3/4" Doors
- 1 - Split spindle, 2 1/4" Doors
- 1 - Split spindle, 1 3/4" Doors
- 1 - Set screw
- 1 - Installation instruction
- 1 - Hex wrench

LH Outswing Panel uses LH PN RH Outswing Panel uses RH PN		
Color	LH PN	RH PN
Matte Black	11870169	11870160
Satin Nickel PVD	11870171	11870162
Oil Rubbed Bronze PVD	11870172	11870164
Dark Bronze	11870174	11870166



RH shown

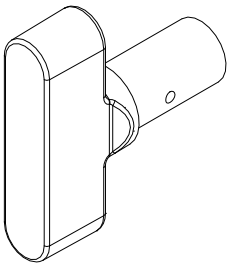
Thumb Turn, Contemporary

For Keyed Handle

Includes:

- Thumb Turn Washer
- Thumb Turn Push Nut

No Tail Piece/Actuator (for keyed handle)	
Color	PN
Oil Rubbed Bronze PVD	10148485
Satin Nickel PVD	10148487
Dark Bronze	10148479
Matte Black	10148480



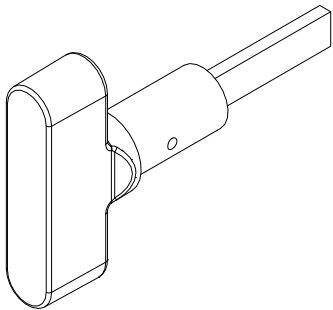
Thumb Turn, Contemporary with Actuator/Tail Piece

For Non-Keyed Handle

Includes:

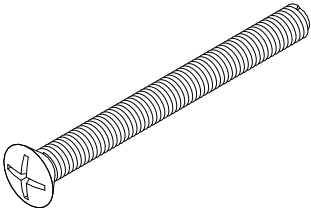
- Actuator/Tailpiece
- Thumb Turn Washer
- Thumb Turn Push Nut

With Tail Piece/Actuator (for non-keyed handle)	
Color	PN
Oil Rubbed Bronze PVD	10148497
Satin Nickel PVD	10148499
Dark Bronze	10148491
Matte Black	10148492



M5 x 55mm Oval Head Machine Screw

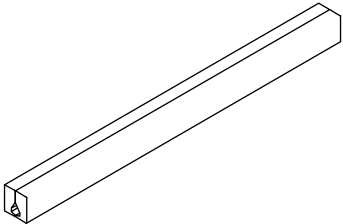
Color	PN
Satin Taupe	10148400
Oil Rubbed Bronze PVD	10148402
Satin Nickel PVD	10148403
Dark Bronze	10148404
Matte Black	10148440



Spindle (Hoppe)

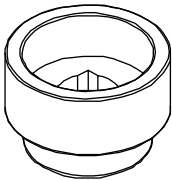
- Includes:**
- 1 - 2 piece spindle
 - 2 - Set screws

Size	PN
4 3/4"	10148414
5 1/2"	10148415



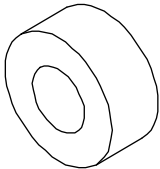
Handle Extension

3/4" Handle Extension (Requires 3/4" Spindle Extension)	
Color	PN
Satin Taupe	10148419
Oil Rubbed Bronze PVD	10148421
Satin Nickel PVD	10148422
Dark Bronze	10148420
Matte Black	10148445



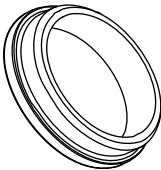
Gasket Post

PN
10148404



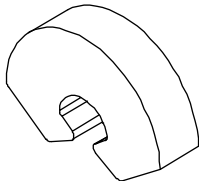
Lever Bushing

Color	PN
Gray	10148448
Natural	02062202
Black	10148020



Gasket - Top Backplate

PN
10148405



Keyed Cylinder, Lock

(Schlage “C” Keyway)
For service replacement only.

Includes:

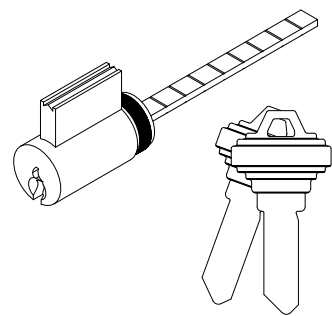
2 - Keys

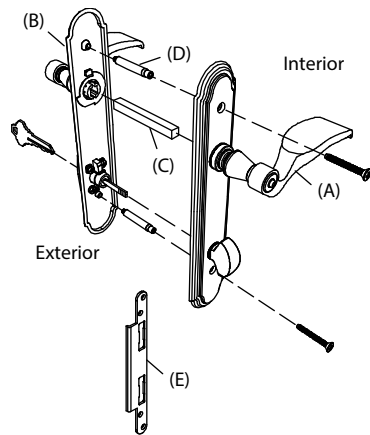
NOTE: For Keyed Alike orders, use program C87P2

Polished Chrome, White, Satin Nickel PVD, Matte Black use
Chrome Face

Satin Taupe, Antique Brass, Satin Chrome, Oil Rubbed
Bronze, Oil Rubbed Bronze PVD, Brass PVD, Dark Bronze
use Brass Face

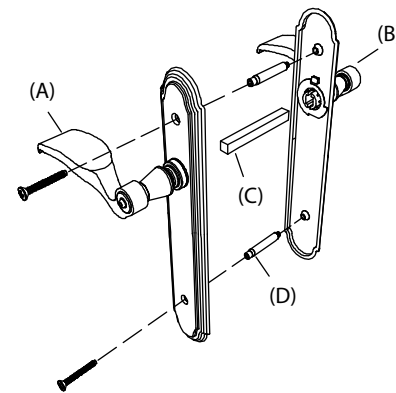
Color	PN
Brass Face	10830211
Chrome Face	10830208





**Multi-Point Handle, Active, Solid Brass -
Pre 2000 (Essve)**

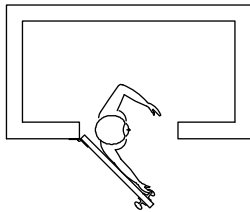
No longer available. Current handle can
be used by turning it upside down.



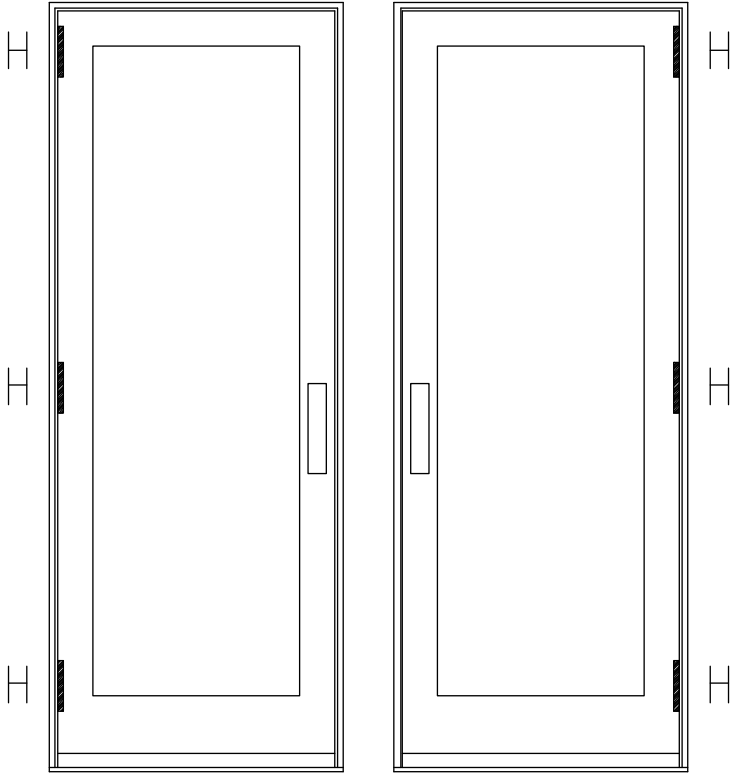
**Multi-Point Handle, Inactive, Solid Brass
- Pre 2000 (Essve)**

No longer available. Current handle can
be used by turning it upside down.

NOTE: Always view units from the exterior for handing.
H=Hinge location

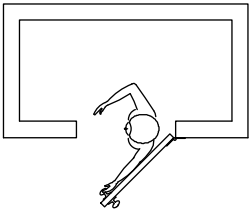


RH Outswing



X-RH Outswing
 This panel uses the right hand hinge

X-LH Outswing
 This panel uses the left hand hinge



LH Outswing

Hinge Kit, Adjustable

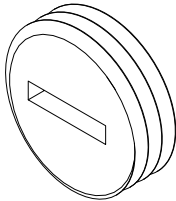
Includes:

- 1 - Adjustable hinge
- 1 - #10 x 2 1/2" Phillips flat head wood screws (jamb)
- 5 - #10 x 3/4" Phillips flat head wood screws (jamb, stationary stile)
- 4 - #8 x 1 1/2" Phillips flat head wood screws (panel)

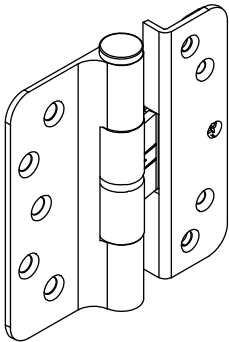
NOTE: Hinge part number includes the color matched screws, If you need to order the screws separately, they are listed below.

Adjustment Cover, Adjustable Hinge

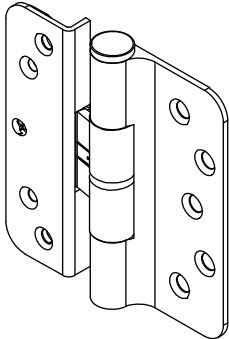
PN
11844039



Adjustable Hinge Package - Color and Part Number			Matching Screw Color
Hinge Color	LH PN	RH PN	
Satin Taupe (TP)	02101216	02101227	TP
Goldtone (GT)	02101213	02101224	GT
Silver Frost (SF)	02101218	02101229	Stainless Steel
Dark Bronze (DKBZ)	02101217	02101228	DKBZ
Antique Brass (AB)	02101210	02101221	DKBZ
White (WH)	02101214	02101225	WH
Satin Chrome (SC)	02101212	02101223	Stainless Steel
Oil Rubbed Bronze (ORBZ)	02101219	02101230	DKBZ
Oil Rubbed Bronze PVD (ORBZ)	02101211	02101222	DKBZ
Brass PVD (BS)	02101215	02101226	BS PVD
Satin Nickel (SN) PVD	02101220	02101231	Stainless Steel
Polished Chrome (PC)	02101234	02101235	Stainless Steel
Matte Black (MBK)	02101236	02101237	MBK



LH Hinge



RH Hinge

Individual Screw Description	Color and Part Number							
	TP	GT	WH	DKBZ	BS PVD	Stainless Steel	Chrome	MBK
#8 x 1 1/2" Phillips flat head wood screws (panel). 4 - per hinge.	11865177	11865172	11865173	02058013	11865176	11865175		11865178
#10 x 3/4" Phillips flat head wood screws (jamb) (stationary stile). 5 -per hinge.	11800674	11800670	11800671	11800669	11800673		11800672	11800677
#10 x 2 1/2" Phillips flat head wood screws (jamb). 1 - per hinge.	11800653	11800632	11800637	11800644	10148185	11800639		11800696
NOTE: Part numbers for these screws are sold in packages of 4 screws and includes 1 - 5/32" Allen wrench. (Long Hinge Screw Package)								

4" Butt Hinge

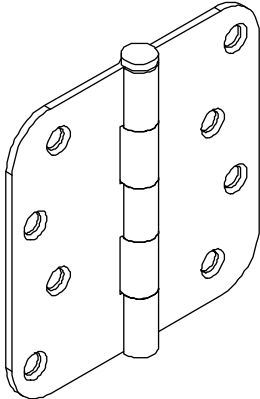
NRP=Non Removable Pin

Includes:

- 1 - 4" Hinge
- 7 - #9 x 1" Phillips flat head wood screws
- 1 - #10 x 2 1/2" Phillips flat head wood screw (frame)

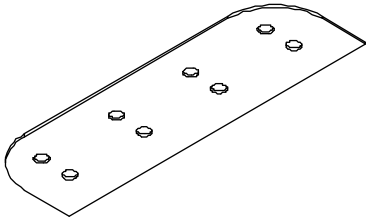
Hinge Color	PN
Brass	02101140
Satin Nickel PVD	02100599
Stainless Steel	11809005

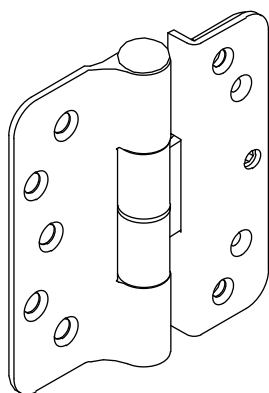
Screw Color	PN
#9 x 1" Brass	11213824
#10 x 2 1/2" Brass PVD	11800679



4" Butt Hinge Shim

PN
10500222

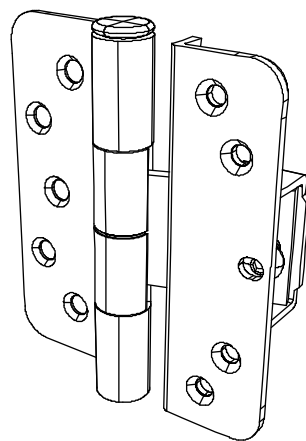




Hinge, Adjustable, Pre 2012

No longer available.

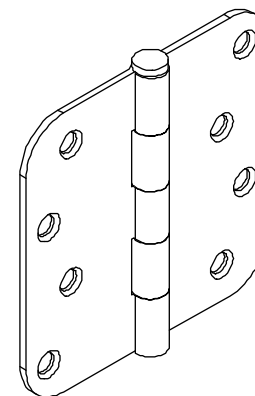
NOTE: The current adjustable hinge kit may be used. If using the current hinge, all hinges on the panel must be changed.



Hinge, Adjustable, 2000-2005

No longer available.

NOTE: The current adjustable hinge kit may be used. If using the current hinge, all hinges on the panel must be changed.



Butt Hinge, Outswing Doors (RP version shown)

No longer available.

Screw Description		
Available fasteners: #10 x 1" Phillips flat head wood screws. Quantity of 5 needed per hinge		
Hinge Color	Screw Color	PN
Satin Taupe	Satin Taupe	05580145
Goldtone	Goldtone	11800606
Satin Frost	Stainless Steel	11800605
Dark Bronze	Dark Bronze	02050526
Antique Brass	Dark Bronze	02050526
White	White	11800603
Satin Chrome	Stainless Steel	11800605
Oil Rubbed Bronze	Dark Bronze	02050526
Oil Rubbed Bronze PVD	Dark Bronze	02050526
Brass PVD	Brass PVD	11800600
Satin Nickel PVD	Stainless Steel	11800605
Polished Chrome	Stainless Steel	11800605

Pkg, Panel Strike Plate

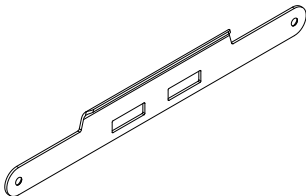
Mortise Lock or Multi-Point Lock
UOAF - std on 2 panel operator

Includes:

- 1 - Panel strike plate, Stainless Steel (05700049), Antique Brass (05700044), Oil Rubbed Bronze PVD (05700117) and Brass PVD (10148176)
- 2 - #8-18 x 1" Type AB, Full thread, Phillips flat head screws, Stainless Steel (11800645) and Dark Bronze (11800652)

Note: Dark Bronze screws are used with Antique Brass and Oil Rubbed Bronze PVD

Color	PN
Stainless Steel	05700312
Antique Brass	05700313
Oil Rubbed Bronze PVD	05700314
Brass PVD	10148183



Strike Plate, Jamb

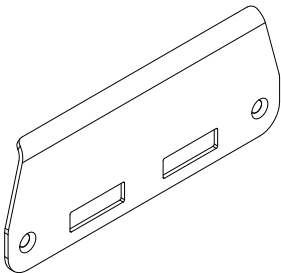
Mortise Lock or Multi-Point Lock
UOAF - std on 1 panel operator

Includes:

- 1 - Jamb strike plate
- 2 - #8 x 1" Brass Phillips flat head wood screws, Stainless Steel (11800645), Dark Bronze (11800652), Brass PVD (11800536)

Note: Dark Bronze screws are used with Antique Brass and Oil Rubbed Bronze PVD

Color	PN
Stainless Steel	05700309
Antique Brass	05700310
Oil Rubbed Bronze PVD	05700311
Brass PVD	10148182



Cover Plate

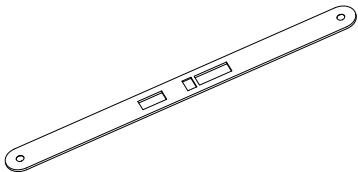
Active Mortise Lock or Multi-Point Lock

Includes:

- 1 - Cover plate
- 2 - #8 x 1" Brass Phillips flat head wood screws Stainless Steel - 11800645, Dark Bronze - 11800652, Brass PVD - 11800536

Note: Dark Bronze screws are used with Antique Brass and Oil Rubbed Bronze PVD

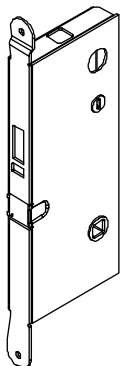
Color	PN
Stainless Steel	05700306
Antique Brass	05700307
Oil Rubbed Bronze PVD	05700308
Brass PVD	10148179



Mortise Lock, Inactive Panel Multi-Point Lock

(Head/foot shoot bolts)

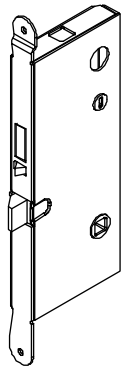
PN
05700131



Mortise Lock, Active Multi-Point Lock

(Latch, dead bolt and head/foot shoot bolts)

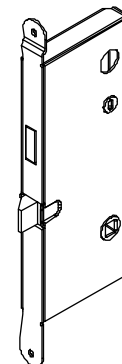
PN
05700130



Mortise Lock, Active Single Point

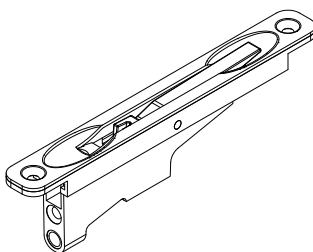
(Latch and dead bolt only)

PN
05700129



Head or Foot Flush Bolt - Inactive Panel

Color	PN
Black	11101780

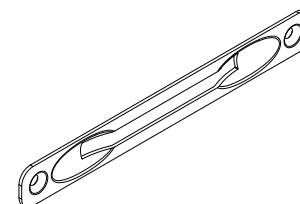


Cover Plate for Flush Bolt

Includes:

- 1 - Cover plate
- 2 - #8 x 1" screws

Color	PN
Aluminum	11860402

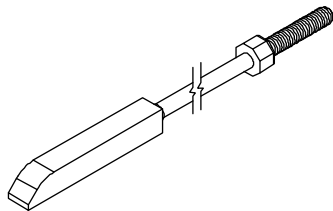


Inactive Panel Locking Rod Assembly, Top or Bottom Flush Bolt

Includes:

1 - Locking rod with end bolt

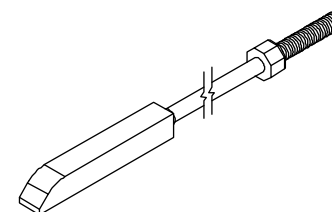
CN Height	Top Locking Rod Length	PN
6/8	11"	05700180
7/0	11"	05700180
8/0	27"	05700185
9/0	34 1/4"	05700170
Height	Btm Locking Rod Length	PN
All heights	11 1/2"	10815178



Locking Rod Assembly, Bottom for Multi-Point Lock

Solid stainless steel rod with 1/4" - 20 threads
Active Panels with multi-point

CN Height	Btm Locking Rod Length	Color	PN
6/8	34 9/32"	Stainless Steel	05700170
7/0			
8/0			
9/0			



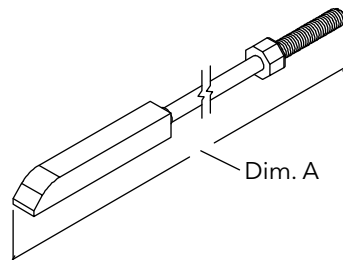
Locking Rod Assembly, Top for Multi-Point Lock

Solid stainless steel rod with 1/4" - 20 threads
Active Panels with multi-point

Usage dates:

3/02 to present (Amerock) 8-0 height see History
5/10/90 to present (Amerock) 6-8 and 7-0 height

CN Height	Top Locking Rod Length	PN
6/8	37 15/16"	05700176
7/0	41 15/16"	05700177
8/0	51 7/16"	05700179
9/0	63 7/16"	05700191



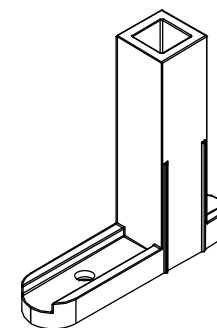
Shoot Bolt Guide

Active Panels with multi-point

Includes:

1 - Shoot Bolt Guide
1 - #8 x 1 1/2" Phillips pan head wood screw

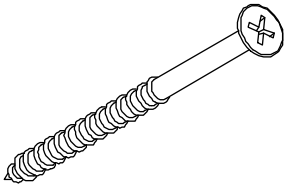
PN
10815199



Installation Screw Package; Strike Plate(s) at Head Jamb or Locking Jamb

#8 x 2 1/2" Flat Head wood screw

Qty	Color	PN
Package of 2	Stainless Steel	11882349
	Brass PVD	11882343
	Antique Brass	11882347

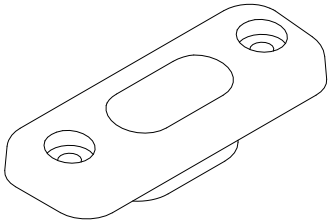


Strike, Sill

Includes:

- 1 - Strike plate
- 2 - #8 x 5/8" Phillips truss head stainless steel machine screws (sill)
- 2 - Well-nut threaded insert (sill)

Color	PN
Beige	18900365
Bronze	18900368

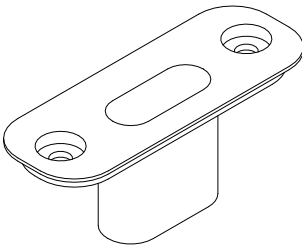


Strike Plate, Head Jamb

Includes:

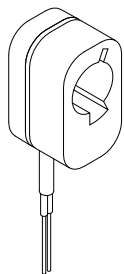
- 1 - Strike plate
- 2 - #8 x 1" Phillips truss head screws (head jamb)
- 2 - #8 x 3" truss head stainless screws (head jamb)

Color	PN
Beige	05700315
Bronze	05700316



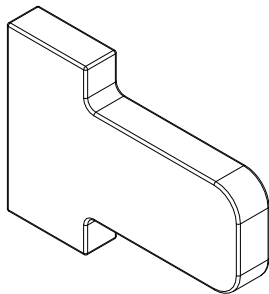
Micro Switch Assembly

Color	PN
Black	10501824



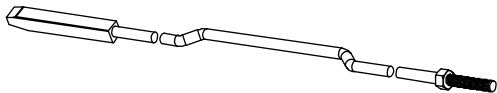
Tailpiece, Non-keyed, Micro Switch

Color	PN
Stainless Steel	10501844



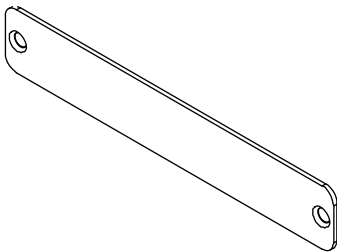
Lock Rod, Transmitter Recess, Shoot Bolt at Sill

Color	LH PN	RH PN
Brushed Stainless Steel	10501839	10501842



Cover, Transmitter

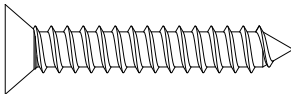
Color	PN
Brushed Stainless Steel	10501822



#8-18 x 1" Type AB, Full Thread

Used for Transmitter Cover
Need quantity of 2 for each part

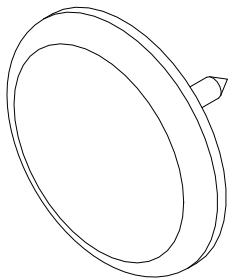
PN
11800769



Jamb Spacer Tack, Stationary Panel

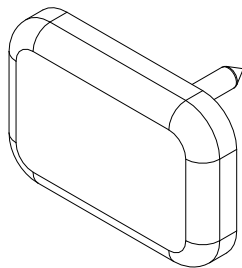
3/4" Diameter Head

PN
11860423



Head Jamb Spacer Tack; Stationary Panel

PN
11860424

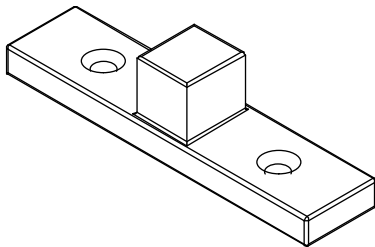


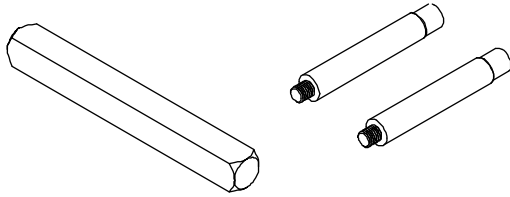
Sill Bolt, Stationary Panel

Includes:

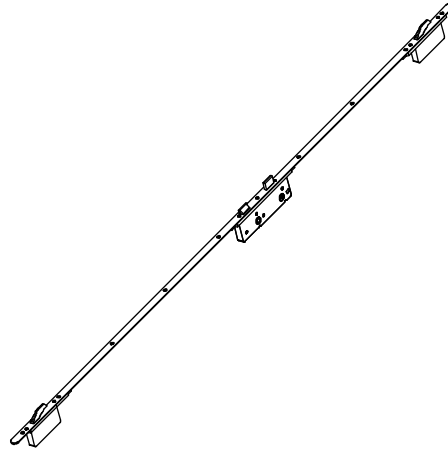
2 - #8 x 3" Phillips flat head wood screws (11800830)

Color	PN
Zinc Die Cast	11101856

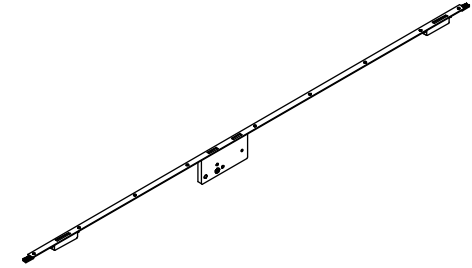




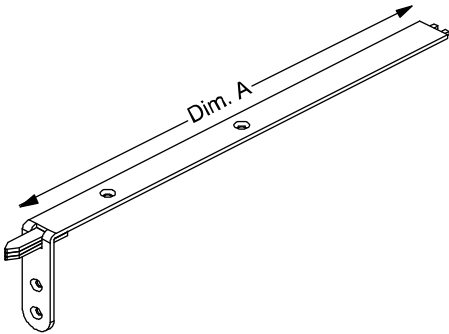
**Spindle Package for Multi-Point Handle
(Essve) - Pre 2000**
No Longer Available



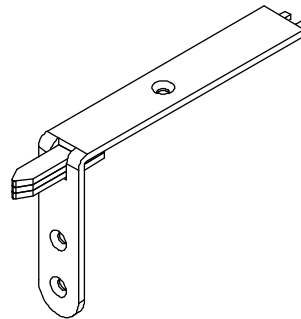
**Active Multi-Point Hardware Assembly
(Essve) - Pre 2000**
No Longer Available



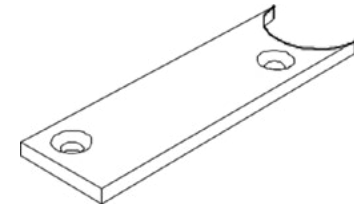
**Inactive Multi-Point Hardware Assembly
(Essve) - Pre 2000**
No Longer Available



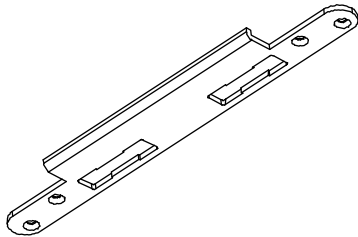
**Multi-Point Top Corner Drive (Essve)
Pre 2000**
No Longer Available



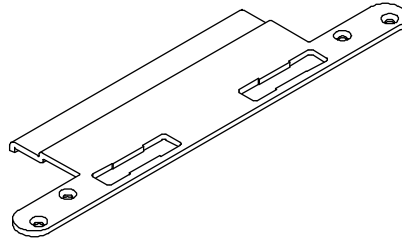
**Multi-Point Bottom Corner Drive (Essve)
Pre 2000**
No Longer Available



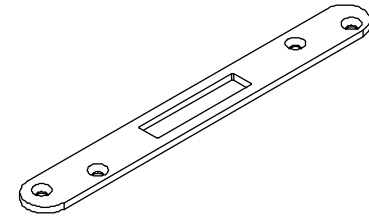
**Corner Drive Filler, Multi-Point Lock (Essve)
Pre 2000**
No Longer Available



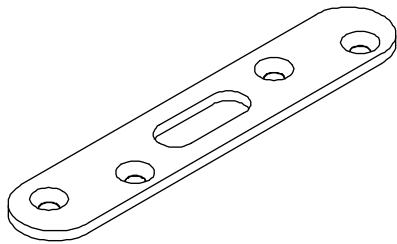
Jamb Strike, Center, Solid Brass; Multi-Point Lock (Essve) - Pre 2000
No longer available.



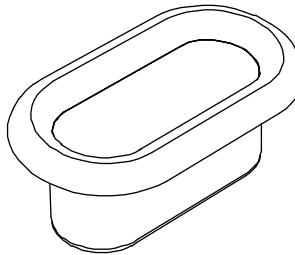
Jamb Strike, Center, Extended, Solid Brass; Multi-Point Lock (Essve) - Pre 2000
No longer available.



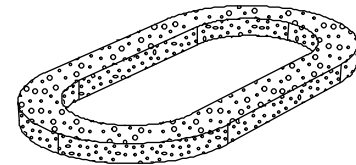
Jamb Strike, Top or Bottom, Solid Brass; Multi-Point Lock (Essve) - Pre 2000
No longer available.



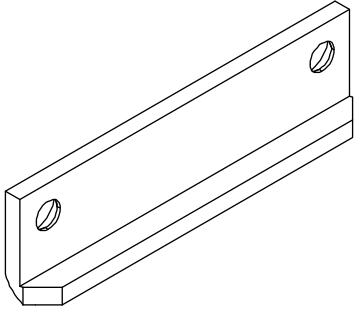
Strike, Inactive Panel, Head Jamb; Multi-Point Lock (Essve) - Pre 2000
No longer available.



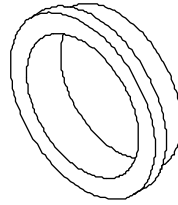
Corner Drive Sill Receptacle, Solid Brass; Multi-Point Lock (Essve) - Pre 2000
No longer available.



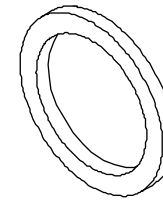
Sill Receptacle Gasket; Multi-Point Lock
No longer available.



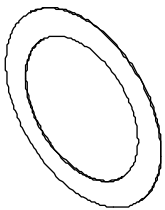
Astragal Strike Latch; Multi-Point Lock (Essve) - Pre 2000
No longer available.



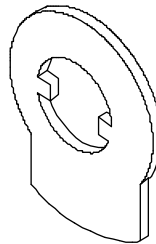
Lever Washers Pre 2000
No longer available.



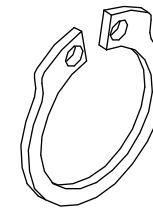
Lever Spacers Pre 2000
No longer available.



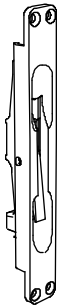
Lever Shims Pre 2000
No longer available.



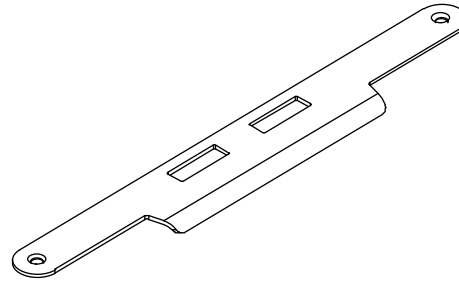
Dummy Lever Cams Pre 2000
No longer available.



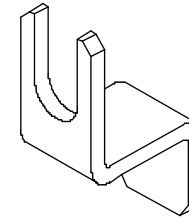
Snap Rings Pre 2000
No longer available.



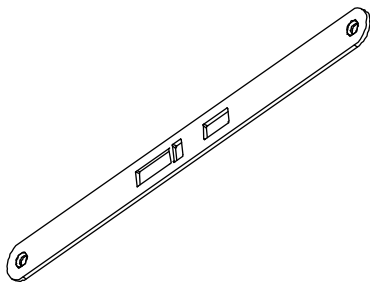
Inactive Panel Flush Bolt - 9/25/00 - 3/02
No longer available.



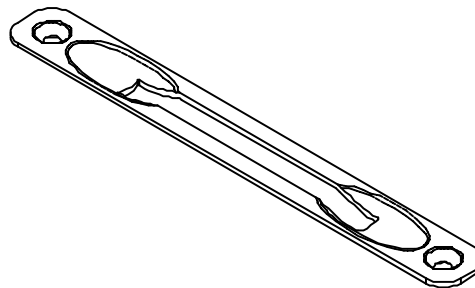
Strike Plate, Panel - Mortise Lock or Multi-Point Lock 9/25/00 to 3/31/03 (Amerock)
No longer available.



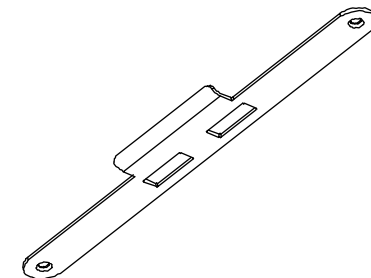
Stop clip with screws 9/25/00 to present
No longer available as individual part.



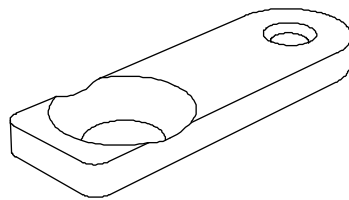
Cover Plate, Active Panel - Mortise Lock or Multi-Point Lock 1/17/00 to 3/31/03 (Amerock)
No longer available.



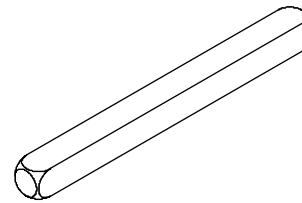
Cover Plate for Flush Bolt
No longer available.



Strike Plate, Inactive Panel - Mortise Lock or Multi-Point Lock - 9/25/00 - 3/31/03 (Amerock)
No longer available.



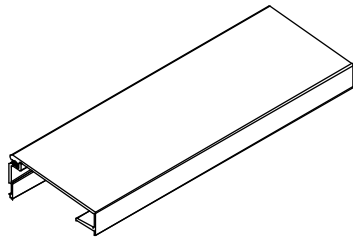
**Inactive Panel Backset Extension - Head or
Foot Flush Bolt - 9/25/00 to present**
No longer available.



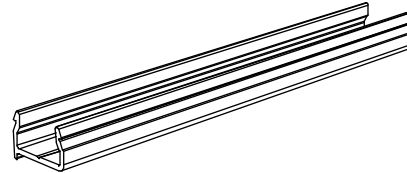
Spindle - 4 3/16\" - Pre 2000
No longer available.

Ordering specifications (use all that apply):

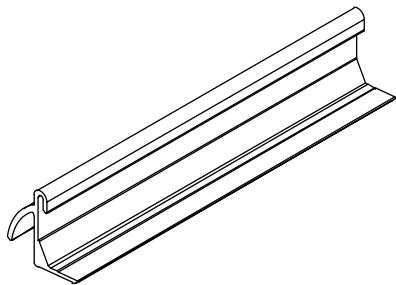
1. Original order/line number
2. profile number;
3. length;
4. handing;
5. finish.



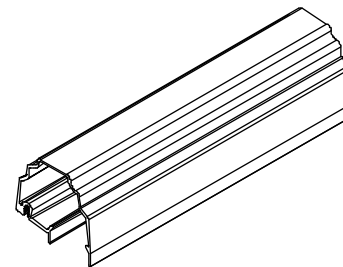
Head Jamb/Jamb Parting Stop, A1266



Mullion Casing Base, A 771



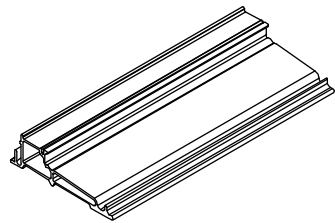
Hydro-Optimizer, A1251



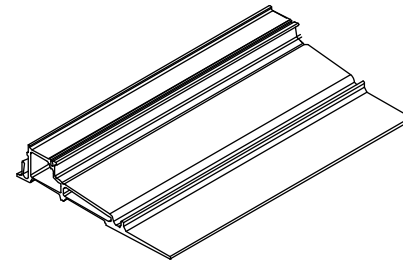
Astragal Cladding, A772

Ordering specifications (use all that apply):

1. Original order/line number
2. profile number;
3. length
4. inswing or outswing;
5. handing;
6. finish.



Ultrex Sill 4 9/16 Jamb, F256
Beige or Bronze



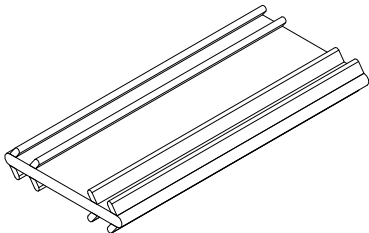
Ultrex Sill 6 9/16 Jamb, F257
Beige or Bronze

Connecting Barb

V803

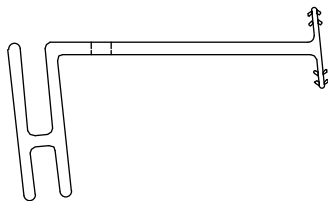
NOTE: Color may vary depending on current stock.

Length	PN
Specify Length	15812999



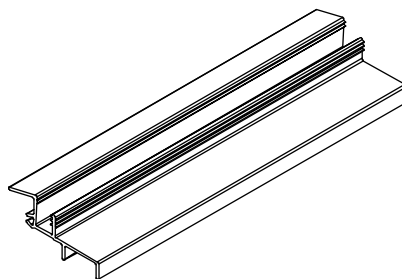
Ordering specifications (use all that apply):

1. Original order/line number
2. profile number;
3. length;
4. handing;
5. finish.



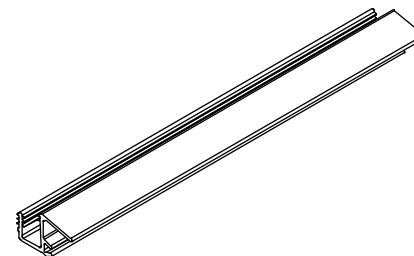
Sill Leveling Block (Transom), V027

Beige or Black



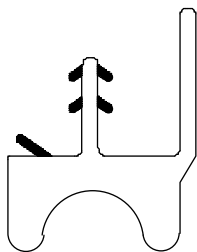
Stationary Panel Drip/Sill Spacer, V941

Beige or Black



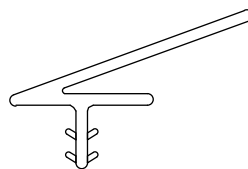
Panel Drip, V940

Beige or Black



Panel Drip (In-Sash Transom), V800

Beige or Black

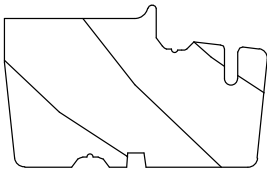


Sash Retainer (Transom), V026

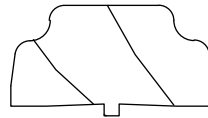
Beige or Black

Ordering specifications (use all that apply):

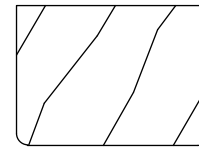
1. Profile number;
2. rough opening;
3. handing;
4. length;
5. finish.



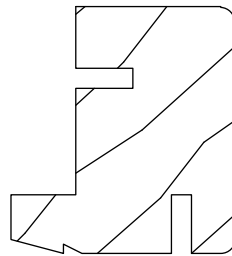
First Mull Casing and Astragal, W1455



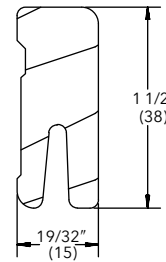
Astragal Cover, W7554



Head Jamb Stop, W8598



Jamb Stop, W6531

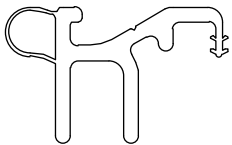


Sill Liner (oak), W2528

Weather Strip, Sill

V776

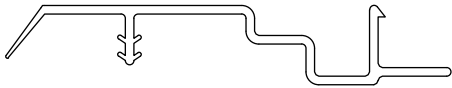
Length	Beige PN	Black PN
87 11/16"	11197276	NA
164 7/8"	11197296	11197297



Weather Strip, Frame

V017

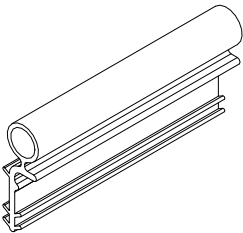
Length	Beige PN	Black PN
41 5/16"	11197536	NA
80 5/8"	11198668	NA
94 1/8"	11198682	NA
164 5/32"	11197596	NA
164 7/8"	11197596	11197598



Weather Strip, Stile

V020

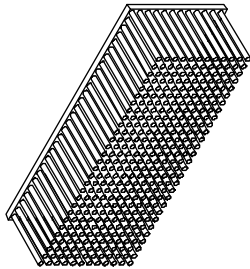
Length	Beige PN	Black PN
79 7/16"	11197968	11197969
83 7/16"	11197970	11197982
92 15/16"	11197982	11197981
95 9/16"	11197980	NA
104 15/16"	11197990	11197991
150"	11197999	11197998



Pile Weather Strip, Jamb or Panel

1 3/8" x 3/8" x 1/2", Adhesive backed

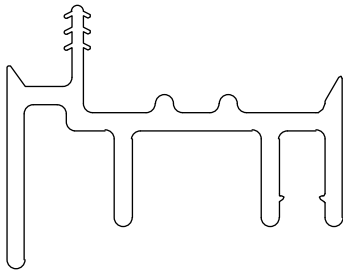
Color	PN
Gray	15600010



Sweep, Active and Inactive Panel

V779

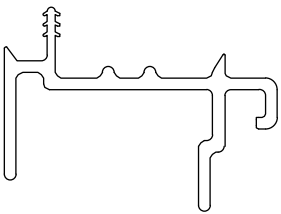
Length	Beige PN	Black PN
CN 2/6	11197426	NA
CN 2/8	11197428	NA
CN 3/0	11197430	11197431



Sweep, Stationary Panel

V778

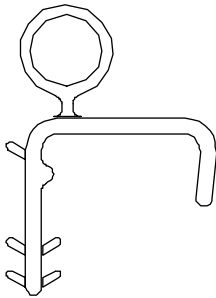
Length	Beige PN	Black PN
CN 3/0	11197330	NA
150"	11197399	11197398



Weather Strip, Panel Cover

V018

Length	Beige PN	Black PN
150"	11198799	11198999

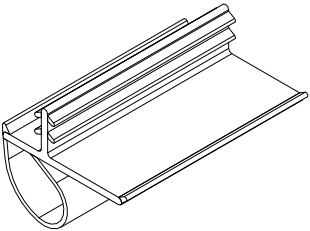


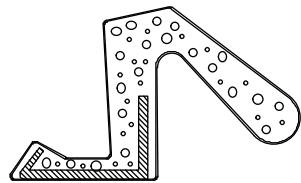
Offset Bulb Weather Strip

V796

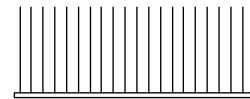
Used at: Parting Stop, Frame, Mull Casing, Transom and Astragal

Length	Color	PN
75 43/64"	Beige	15170866
	Black	15170867
104 7/8"	Beige	15170090
	Black	15170091
115 41/64"	Beige	15170810
	Black	15170811
189 11/16"	Beige	15173298
	Black	15173398





Foam Weather Strip, Frame V650
No longer available.



Pile Weather Strip, Sill
No longer available.

When ordering replacement panels, specify:

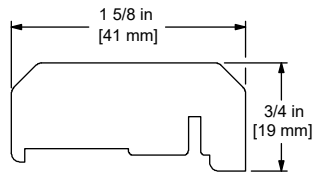
NOTE: Weather strip is included with all panels (where applicable).

1. OM of panel (NOTE: OM of panel does not include astragal, mull casing);
 - a. template required for Ultimate Arch Top French door panel prior to 7/14/03.
2. Active, Inactive or Stationary;
 - a. Active - specify no lock (no bore), bore for passage latch/dead bolt, single-point mortise lock or multi-point lock.
 - b. Inactive - specify head or foot bolts or multi-point lock.
 - c. Stationary - specify configuration and/or mull casing (if applicable).
3. Handing;
4. Glazing;
5. Finish;
6. Glazing bead profile
 - a. bevel
 - b. square.
 - Active panels include sweep and route for hinges.
 - Inactive panels include sweep, route for hinges, astragal and head and foot bolts.
 - Stationary panels include leveling block.



Ordering specifications (use all that apply):

1. Original order/line number;
2. profile number;
3. length;
4. handing;
 - a. on jamb filler specify right or left jamb (viewed from exterior)
5. finish.



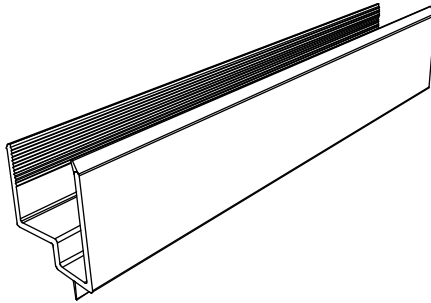
Astragal, W7528



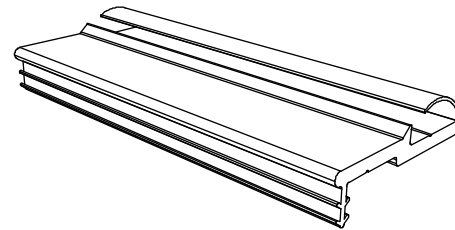
Stationary Panel Head Jamb Spacer, W6126

Ordering specifications (use all that apply):

1. Original order/line number;
2. profile number;
3. length;
4. handing;
 - a. on jamb filler specify right or left jamb (viewed from exterior)
5. finish.



Bottom Rail Filler, V200



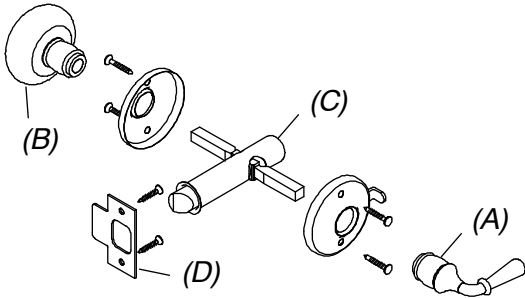
Astragal Base/Weather Strip - Beige, V822

Handle Package, Solid Brass

Includes:

- 1 - Interior locking handle assembly (A) with rose
- 1 - Exterior handle (B) with rose
- 1 - Latch bolt assembly (C)
- 1 - Strike (D)
- 4 - #6 x 3/4" Phillips oval head wood screws (handle)
- 2 - #4 x 3/4" Phillips oval head wood screws (strike)

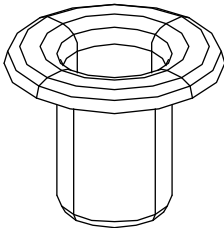
PN
02550630



Thimble

Head Bolt Receiver

Color	PN
Brass	02540664

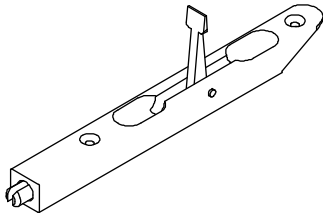


Head or Foot Bolt, Solid Brass

Includes:

1 - Bolt Assembly

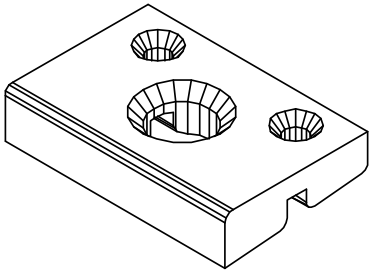
PN
00143068



6 9/16" Sill Strike

Foot Bolt receiver - specify prep for combination

Color	PN
Beige	05700031

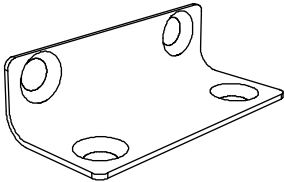


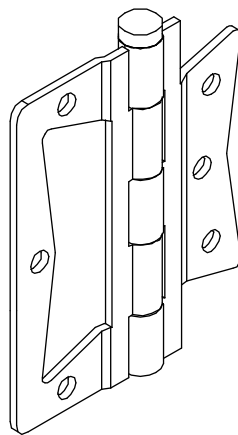
Stationary Panel Bracket

Includes:

- 1 - Stationary panel bracket
- 4 - #7 x 3/4" Phillips flat head wood screws

PN
11841000





Surface Mount Hinge Pair, Solid Brass

No longer available